

ADVANCE YOUR CLOUD EXPERIENCE WITH COMPOSABILITY

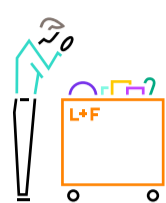
HPE Synergy

THE AGILITY-STABILITY PARADOX FOR THE EVOLVING ENTERPRISE IT

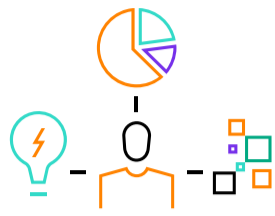


Forward-thinking companies are constantly changing, innovating, and transforming. At the heart of these digital transformations is an IT infrastructure that powers innovation and value creation for next-generation apps while running traditional workloads more efficiently. But there's a challenge to this approach. Your IT infrastructure must maintain the structure and security of traditional IT while still delivering the flexibility and speed for new applications.

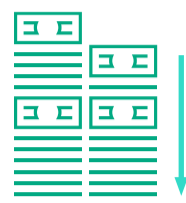
COMPOSABLE INFRASTRUCTURE HELPS YOU MANAGE THIS DUALITY



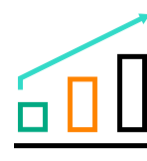
Enables resources to be quickly composed or reconfigured based on business needs



Pools resources for maximum efficiency and flexibility, much like a cloud computing model



Lowers TCO by reducing CAPEX and OPEX



Market likely to grow at a compound annual growth rate (CAGR) of 58.2% to reach \$4.7 billion in 2023¹

HPE SYNERGY GIVES YOU ONE INFRASTRUCTURE TO POWER ANY WORKLOAD



HPE Synergy, the first platform architected for composability,² enables you to compose fluid pools of physical and virtual compute, storage, and fabric resources into any configuration for any workload.

As an extensible software-defined platform, it easily enables a broad range of applications and operational models such as virtualization and virtual desktop infrastructure (VDI), containers, hybrid cloud, data management and analytics, DevOps, and more.



DESIGN THE AI-DRIVEN OPERATIONS (AI-OPS) OF THE FUTURE WITH HPE SYNERGY

1

One infrastructure for any workload: Manage one infrastructure that supports current and next-generation apps, each with vastly diverse infrastructure requirements and service-level objectives.

2

Automate everyday operations: Eliminate costly silos, free up resources, and simplify IT operations using a single software-defined infrastructure for physical, virtual, and containerized workloads with fluid resource pools of compute, storage, and fabric.

3

Deploy at cloud-like speed and scale: Accelerate application and service delivery through a single interface that precisely composes infrastructure at near-instant speeds.

4

Develop applications faster and smarter: Advance your business with a developer-friendly infrastructure. The unified API allows you to automate infrastructure operations with an extensive ecosystem of partners.



BY THE NUMBERS—HOW YOUR BUSINESS BENEFITS FROM HPE SYNERGY³

35%

lower cost of operations

25%

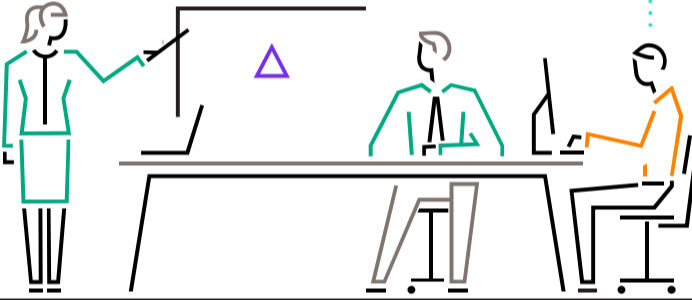
lower IT infrastructure costs

223%

five-year ROI

71%

less staff time per server deployment



60%

increase in IT staff efficiency

30%

higher application development productivity

2.3%

higher user productivity

USERS DEMYSTIFY HPE SYNERGY, MAKING THE CASE FOR COMPOSABLE INFRASTRUCTURE

91%

report that with HPE Synergy, it took between one day and one week to provision infrastructure and deploy operating system and application workloads⁴

94%

report that HPE Synergy simplifies daily operations with automated infrastructure, increasing productivity and control across the data center⁵

93%

rate HPE Synergy valuable for any workload, eliminating costly silos⁶

84%

report that HPE Synergy helped improve their application performance—between 11% and 25% or more⁷

HPE PUTS COMPOSABILITY INTO ACTION

1

Bitcoin reduced its time to provision infrastructure and deploy operating system and application workloads, and reduced costs with HPE Synergy.

2

When Skyview Satellite Networks needed a future-proof infrastructure that scales on demand, one platform for all of their workloads, and one management interface, they chose HPE Synergy.

3

ACP IT Solutions solved two key challenges with HPE Synergy—long lead times to provision infrastructure and its inability to integrate and scale to meet future business demands.

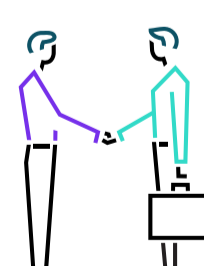
4

HPE Synergy helped Global Client Solutions to adapt their workloads from server to VDI, enabling a seamless remote work transition during the ongoing health crisis.

HPE SYNERGY WITH HPE GREENLAKE—BETTER TOGETHER

Bring the cloud experience to your apps and data on-premises or at a colocation

Pay for what you use, and scale up or down in a unified hybrid operating model



Video gallery

YouTube



MAKING THE SWITCH TO HPE SYNERGY IS EASY AND SEAMLESS



It's never been easier to integrate HPE Synergy into your data center. It can be deployed incrementally, side-by-side with existing resources. Whether you want a single, unified interface, need to boost speed and efficiency, or are focused on eliminating costly errors, HPE Synergy has you covered.



Simplify, automate, and develop faster with HPE Synergy, a composable, bladed infrastructure that powers any workload within a hybrid cloud environment.



LEARN MORE AT hpe.com/synergy

Make the right purchase decision. Contact our presales specialists.



Get updates

¹ Worldwide Composable/Disaggregated Infrastructure Forecast, 2018-2023, IDC, August 2018

² [h20195.www2.hpe.com/v2/Getdocument.aspx?docname=a00082375enw6jumpid=DigDerv](https://www2.hpe.com/v2/Getdocument.aspx?docname=a00082375enw6jumpid=DigDerv)

³ Generating Business Value Through IT Agility Using HPE Synergy, IDC, January 2019

⁴ techvalidate.com/product-research/HPEHybridITSolutions/facts/62D-7FA-39E

⁵ techvalidate.com/product-research/HPEHybridITSolutions/facts/77B-OC1-A99

⁶ techvalidate.com/product-research/HPEHybridITSolutions/facts/F4A-844-D0E