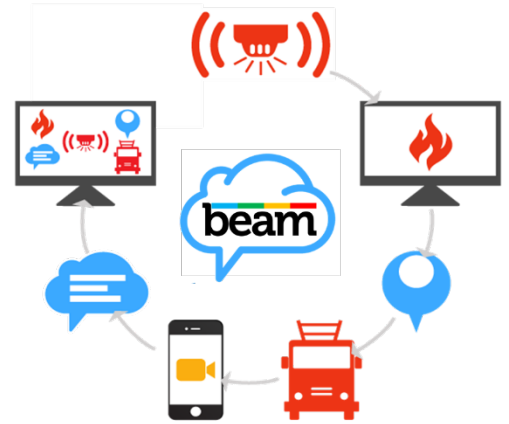


beamFirst

Broadband4Emergency

Turn Minutes into Seconds

- beamFirst empowers first responders with heightened **Mobile Internet of Things (IoT) communication** capabilities, including text, audio/video and sub-second GPS connectivity using smart and wearable devices – **Android and iOS**.
- Users can share secured, profiled, geotagged IoT content and media, as well as **real-time collaboration** with citizens and dispatchers.
- Beam converts **real-time IoT data - including audio/video and GPS** – into actionable knowledge that augments human intelligence.
- It enhances **mission-critical mobile communication** for organizations that are dependent on time-centric, life-saving decision-making.

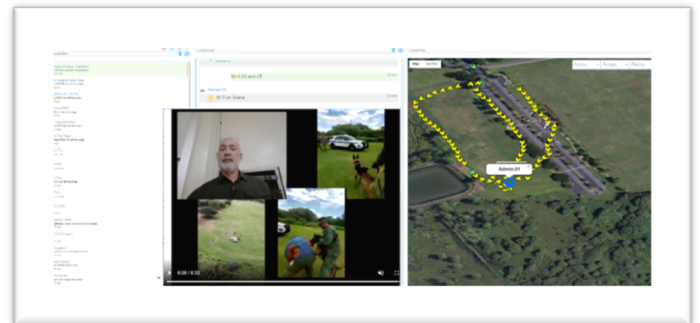


This end-to-end service is designed by first responders for Emergency Response, (Police, Fire and EMS), NG911/PSAPs and First Responder mobile communication and safety.

Features:

Enable real-time Audio, Video and Text communication and GPS tracking on-the-go;

- ✓ Provide real-time mission-critical Mobile-IoT messaging and multimedia content sharing;
- ✓ Ensure instant status reporting and sub-second latency GPS via **all mobile devices**; Offers 2-way broadcasting and notification via text, location, and multimedia;
- ✓ Set-up and **manage mobile workforce and assets**, and easily integrate IoT apps;
- ✓ Target custom analytics and simplify post-event reporting.



Benefits:

- ✓ Smooth cost-effective **migration from legacy, voice communication to broadband**;
- ✓ Combined mobile messaging, content sharing and collaboration under one service;
- ✓ **Live video overlaid with sub-second latency GPS** for enhanced situational awareness;
- ✓ **Cost reduction** by removing multi-vendors integrating GPS, IMS and RMS services;
- ✓ **Customize your own solutions in weeks** with minimal or no development cost;
- ✓ **Recurring revenue model based on affordable cost points.**

For more information, visit www.beam.Live