



Supporting device needs for Healthcare Providers

Microsoft Surface for Business offers a versatile device portfolio with industry-leading security to support healthcare professionals delivering in-person and virtual patient care services.



A vision for the future in Healthcare with Microsoft Surface

The Healthcare industry's rapid revolution over the past few years is raising challenges for providers. Patients have also become more digitally sophisticated, wanting more personalization and consistent experiences. Many caretakers are suffering from burnout, and a shortage of 10 million healthcare workers is predicted by 2030.¹ Healthcare organizations are also under constant pressure to innovate, all while data volumes and velocity increase rapidly. All this creates new requirements for in-person, mobile, and virtual patient interactions, encouraging some health organizations to update their hardware to better support telehealth, enhance collaboration between virtual care teams, and provide greater flexibility for meeting various working styles.² In this new era of AI, organizations are also enabling employees to tap into generative AI for better access to research and patient data and greater efficiencies. These benefits can empower healthcare providers to deliver better quality care today.

Canada-based [Dynacare](#) supplies providers and patients with crucial medical laboratory services for the effective prevention, diagnosis, and treatment of health concerns. Dynacare wanted to provide employees with a device that would make their jobs easier and, in turn, improve the lives of the patients they serve. It also needed devices that provided optimal security for patients and the flexibility to work with the tools the company was already using. It deployed Surface Pro and Laptop devices to provide flexibility, ease of use, security, and reliability for employees across the organization.

Like Dynacare, many organizations have combined a cloud strategy with a modern device strategy to take advantage of the synergies between Microsoft 365 and Surface, often realizing additional benefits including lower total cost of ownership, inclusive of direct savings, IT staff time savings, and employee productivity gains.³ Light, mobile, and powerful, Surface devices deliver value and a premium experience that fits the needs of all personas in healthcare, from nurses, mobile caregivers, physicians, and virtual care teams to hospital administrators and executives.

“ [Microsoft Surface] offered the best option because of total cost of ownership (TCO), the life of the device, the quality of the device, and the integrations. ”

- Cameron Chojnacki, Director of Technical Solutions and Information Security, [Dynacare](#)



For mobile clinicians, we recommend Surface Pro for Business with Surface Pro Flex Keyboard and Surface Slim Pen.⁴

¹ https://www.who.int/health-topics/health-workforce#tab=tab_1. ² “Understanding The Role Of Modernized PCs In Hybrid Work Environment Optimization”, a commissioned study conducted by Forrester Consulting on behalf of Microsoft, July 2021. ³ “Evaluating the Business Case of Microsoft Surface”, a commissioned business value white paper by IDC on behalf of Microsoft, September 2022. ⁴ Sold separately.

Surface helps unlock people's potential

Innovative technology enables healthcare providers to provide clinicians and staff with versatile tools that drive marked improvements in employee productivity, operational efficiency, and patient experience.

Surface devices are designed to be both versatile and adaptable to meet the modern workforce's diverse needs in healthcare. Powerful processors—including neural processing units (NPUs) to handle on-device AI workloads—keep employees' devices running smoothly while they multitask. Extended battery life and durable design helps Surface meet flexible workstyle needs, so employees can focus on patients, not technology.

Portfolio diversity

Surface has device categories to support all types of healthcare workers. For example, lightweight 2-in-1 devices feature tablet-to-laptop flexibility and detachable keyboards, combining the power of a laptop with the portability and touch interactions of a tablet. Laptops with fixed keyboards offer the power required for demanding applications and clear graphics. Expanding beyond the PC to large-screen devices, the Surface Hub 3 is a Microsoft Teams-certified meetings platform that can transform any space into a virtual team space and interactive whiteboard.

Hardware and peripherals

Whether caregivers and staff prefer typing on the ergonomic keyboard, using the responsive touch display, or fluidly inking with the digital pen, Surface provides plenty of options for interaction. And accessibility options like different pen grips and adaptive touch enable more employees and ensure a consistently satisfying work experience. Caregivers can effectively meet with patients through through HD cameras, PixelSense high resolution displays, Omnisonic speakers, and far-field mics that bring people together in realistic real-time detail, for more personalized interactions. Beyond the keyboard and mouse, features such as touch, voice, 5G connectivity¹, and Surface Pen* ink inspire natural interactions. Surface brings Microsoft-designed hardware and software together—from device to cloud—to offer better experiences, such as the new Copilot key² on the keyboard.

2-in-1 devices

Powerful, flexible, lightweight

NEW! Surface Pro, Copilot+ PC
Advancing the era of AI

13-inch Pro
Copilot+PC



12-inch Pro
Copilot+PC

Laptops

Sleek, responsive, from frontline to boardroom

NEW! Surface Laptop, Copilot+ PC
Advancing the era of AI



**13-inch, 13.8-inch,
or 15-inch Laptop**
Copilot+PC



**14.4-inch
Laptop Studio 2**

Large screen meeting devices



50-inch or 85-inch Hub 3
Digital whiteboard, Microsoft Teams-certified meetings platform, and collaborative computing device.

*Sold separately.

¹ 5G available on select models and not available in all areas; compatibility and performance depends on carrier network, plan and other factors. See carrier for details and pricing.

² Copilot key feature availability varies by market, see aka.ms/keysupport.

Enabling future-readiness for healthcare providers

New technologies tend to develop rapidly and make a sudden impact on arrival. By choosing Microsoft first-party designed Surface devices, health organizations can implement a device strategy that helps them prepare for the future.

Take AI, for instance. Healthcare providers need to embrace and integrate emerging technologies like AI into their workflows, so they can offer innovative healthcare solutions for patients and stay ahead of competitors. AI enhancements can bring productivity gains to all levels of a healthcare organization, saving care teams effort on mundane work like searching for patient information or note-taking in a caregiver huddle, so that they can focus on delivering care for patients. And who knows what new innovations are just around the corner, waiting to shake up our working world once more?



Enable greater resilience

Microsoft and its silicon partners work together to bring hardware and software together—from device to cloud—to offer new AI experiences that support employees, IT, and business.

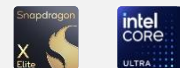
Surface Copilot+ PCs help organizations build a more resilient business through:

- **Versatility and adaptability**, helping remove friction, increase employee productivity, and adapt to how employees want to work so they can unlock new abilities and new ways to solve problems
- **Power and performance** that increase efficiency, creating time and space for employees to be more proactive in planning for the next big moment
- **Security and manageability** advances that enable IT leaders to stay ahead of the curve (and the competition), while strengthening defenses against ongoing cyberthreats
- **Future-readiness** that paves the way for seamlessly integrating new technologies as they arrive to take advantage of new opportunities



Surface Pro

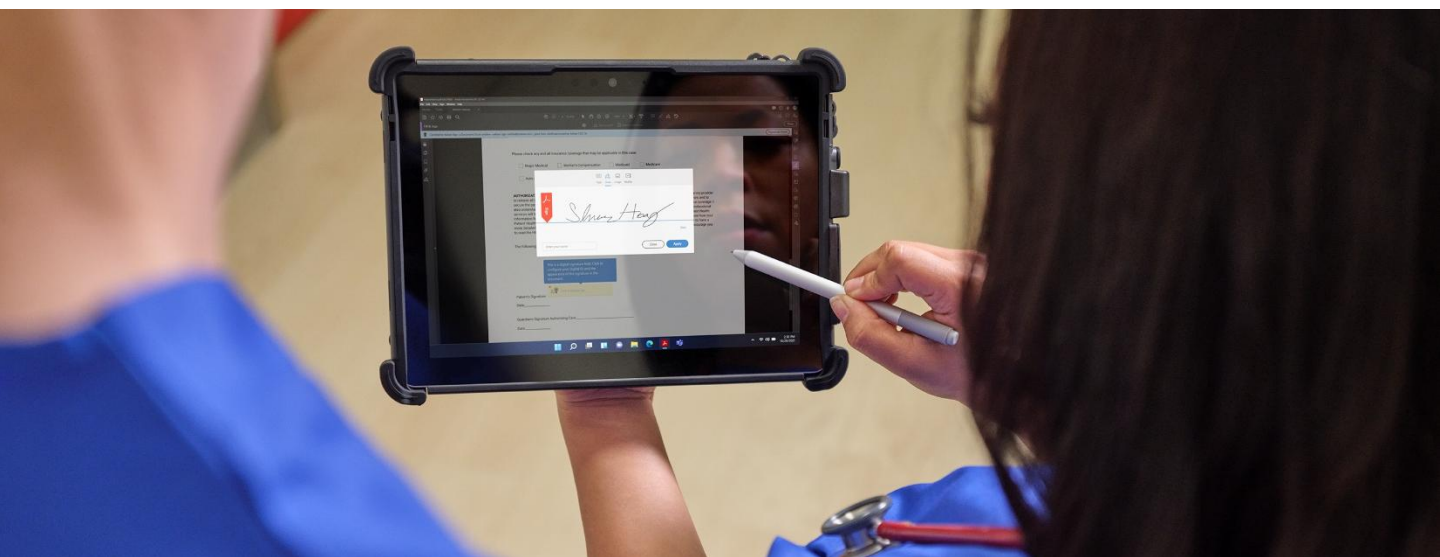
Copilot+PC



Surface Laptop

Delivering a personalized patient experience to improve quality of care

Nurses and mobile caregivers



Quality of patient care is priority one

Nurses and mobile caregivers often interact with patients, so they must deliver more personalized patient experiences. To do this, they require mobile, lightweight, and connected devices that give them instant access to the information needed to check patients in and answer questions as quickly as possible.

Providing personalized experiences isn't easy when caregivers struggle to:

- Stay connected when on the move
- Quickly find patient account information or medical records
- Update patient records accurately and securely
- Clearly communicate doctors' treatment plans
- Enable patients to fill out and sign digital forms
- Enables new and secure AI experiences to accelerate patient care

Surface helps nurses and mobile caregivers:

- Carry a lightweight device with extended battery life that enables all day productivity.
- Feel empowered with form factors—tablet, laptop, studio—that adapt to how they work.
- Run full-featured business apps and new AI experiences like Microsoft 365 Copilot¹ using powerful processors to look up information faster and quickly respond to patients.
- Engage intuitively with Microsoft 365 Copilot Chat¹ through keyboard with a Copilot key², pen, touch, and voice.
- Enable patients to interact with digital forms on a high-definition PixelSense™ touchscreen.
- Go paperless and collect digital signatures on the spot using the Surface Pen.*
- Sign in instantly using facial recognition, a secure PIN, NFC badge, or MFA through Windows Hello.
- Do more with Designed for Surface® accessories* such as durable cases and reception desk kiosk stands.
- Connect with caregivers at other locations with quality speakers, mics, and cameras and Microsoft Teams.*
- Deliver enterprise-grade protection for sensitive data.

*Sold separately.

¹ Microsoft 365 Copilot sold separately and requires a qualifying volume license or subscription. [Microsoft 365 Copilot for Enterprise—Pricing and Features | Microsoft 365](#). Microsoft 365 Copilot Chat with commercial data protection is available at no additional cost for users with an Entra ID enabled, eligible M365 license. Your AI-powered chat for the Web with commercial data protection | [Microsoft 365 Copilot Chat](#).

² Copilot key feature availability varies by market, see [aka.ms/keysupport](#).

For nurses and mobile caregivers, we recommend:

On the move productivity



Choose **Surface Pro 10 5G**

A 2-in-1 for flexibility, collaboration, and mobility

Interact with patients with lightweight tablet portability, laptop performance, extended battery life,² and 5G connectivity³. Powerful enough to replace a laptop or create a full desktop setup by docking to multiple monitors. Choose performance employees need for their work, with Intel® Core™ Ultra processors with Intel® AI Boost NPU, to run business apps, AI experiences, and Windows Studio Effects. Type using a laptop-class keyboard and collect digital signatures with a pen⁴ that's charged and always within reach. Secured-core PC elevates Windows 11 security benefits for caregivers handling the most sensitive data.

[Learn more >](#)

Need a more powerful 2-in-1 device?

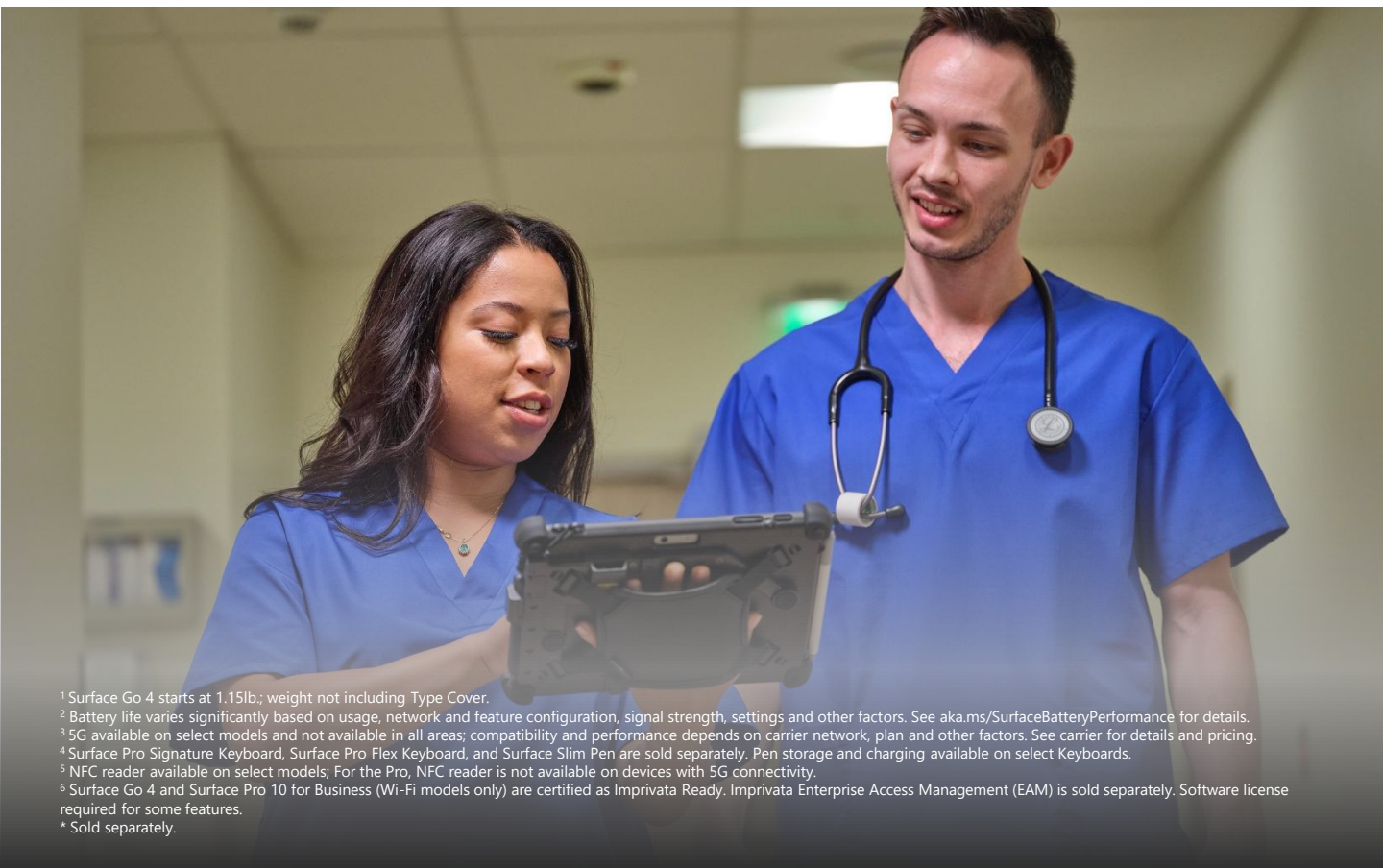


Choose **Surface Pro Copilot+PC**

A flexible, powerful 2-in-1 for the era of AI

Interact with patients with lightning-fast performance, all-day battery life², and optional 5G connectivity.³ For performance, employees can choose between Intel® Core™ Ultra (Series 2) or Snapdragon X Series processors to run business apps, AI experiences, and Windows Studio Effects. Choose between a 12" or 13" PixelSense™ touchscreen designed for Surface Pen⁴, great for paperless notetaking and e-signatures. Sign in instantly using a built-in NFC reader.⁵ Secured-core PC with Microsoft Pluton elevates Windows 11 security benefits for caregivers handling sensitive data.

[Learn more >](#)



¹ Surface Go 4 starts at 1.15lb.; weight not including Type Cover.

² Battery life varies significantly based on usage, network and feature configuration, signal strength, settings and other factors. See aka.ms/SurfaceBatteryPerformance for details.

³ 5G available on select models and not available in all areas; compatibility and performance depends on carrier network, plan and other factors. See carrier for details and pricing.

⁴ Surface Pro Signature Keyboard, Surface Pro Flex Keyboard, and Surface Slim Pen are sold separately. Pen storage and charging available on select Keyboards.

⁵ NFC reader available on select models; For the Pro, NFC reader is not available on devices with 5G connectivity.

⁶ Surface Go 4 and Surface Pro 10 for Business (Wi-Fi models only) are certified as Imprivata Ready. Imprivata Enterprise Access Management (EAM) is sold separately. Software license required for some features.

* Sold separately.

Delivering the best patient care

Physicians and Virtual Care Teams



Physicians often require more computing power to run medical applications, view x-ray images in brilliant detail, and securely handle patient data, whether working from the office, hospital floor, or home. Hardware designed to work with Microsoft Teams helps ensure effective communications with patients during telehealth visits and collaboration with specialists during care team calls.

Physicians face challenges such as:

- Effectively interacting with patients during telehealth visits
- Enabling new and secure AI experiences to accelerate patient care
- Collaborating virtually with colleagues to determine the best treatment plans for patients
- Staying connected when moving from patient to patient
- Quickly finding patient medical records
- Updating patient records accurately and securely
- Ensuring sensitive patient data stays secure

Surface helps physicians:

- Move easily between patients with Surface ultra-portable design, extended battery life, and reliable Wi-Fi 6, Wi-Fi 7, or 5G Connectivity¹.
- View and share treatment plans or x-ray images in stunning detail with PixelSense™ touchscreen displays.
- Run critical business apps, imaging software, and new AI experiences concurrently without sacrificing mobility.
- Look and sound great on every Microsoft Teams* call with HD cameras, optimized microphones, and built-in Omnisonic speakers.
- Engage intently while using keyboard, a Surface pen, or dictation to take digital notes during patient visits.
- Activate Microsoft 365 Copilot Chat² intuitively through keyboard with a Copilot key³, pen, touch, and voice to search, create, and summarize content faster.
- Create the ultimate desktop experience by connecting to displays and docking station in the office or at home.
- Deliver enterprise-grade protection for sensitive data.

*Sold separately.

¹5G available on select models and not available in all areas; compatibility and performance depends on carrier network, plan and other factors. See carrier for details and pricing.

²Microsoft 365 Copilot Chat with commercial data protection is available at no additional cost for users with an Entra ID and an enabled, eligible Microsoft 365 or Office 365 license.

³ Copilot key feature availability varies by market, see aka.ms/keysupport.

For physicians and virtual care teams, we recommend:

Need a more versatile 2-in-1 device?



Choose **Surface Pro** Copilot+PC

The most flexible, powerful Surface 2-in-1

Interact with patients with lightning-fast performance, AI accelerated power, all-day battery life¹, and optional 5G connectivity.² For performance, employees can choose between Intel® Core™ Ultra (Series 2) or Snapdragon X Series processors to run business apps, AI experiences, and Windows Studio Effects. Choose between a 12" or 13" PixelSense™ touchscreen designed for Surface pen³, great for paperless notetaking and e-signatures. Sign in instantly using a built-in NFC reader.⁴ Secured-core PC with Microsoft Pluton elevates Windows 11 security benefits for caregivers handling sensitive data.

[Learn More >](#)

Need a more powerful laptop?



Choose **Surface Laptop** Copilot+PC

Smart, fast, and thin for the era of AI

Elevate advisors' productivity with lightning-fast speed and next-generation AI capabilities, like Microsoft 365 Copilot⁵, powered by a choice of either Intel® Core™ Ultra (Series 2) or Snapdragon X Series processors. Longer battery life¹ keeps advisors in the flow of work—all within an ultra-slim design and choice of 13", 13.5", and 15" touchscreens. They can also connect to external monitors⁸ in their office and at home. Secured-core PC with Microsoft Pluton elevates Windows 11 security benefits for employees handling sensitive data.

[Learn more >](#)

Large meeting device to give virtual care team participants a seat at the table



Choose **Surface Hub 3**

More inclusive meetings for richer collaboration

Give virtual care teams a more inclusive way to meet with a modern, all-in-one collaborative canvas and Microsoft Teams-certified meetings platform. Make any space a teamwork space with a 50" or 85" large screen device that can be wall-mounted or mobile (with stand + battery⁶). Present to onsite and remote specialists simultaneously with AI-powered Surface Hub Smart Camera that auto frames the video feed for remote participants, giving them the best possible view of the room. Whiteboard patient treatment plans using the Surface Hub Pen and Microsoft Whiteboard.*

[Learn More >](#)

¹ Battery life varies significantly based on usage, network and feature configuration, signal strength, settings and other factors. See aka.ms/SurfaceBatteryPerformance for details. ² 5G available on select models and not available in all areas; compatibility and performance depends on carrier network, plan and other factors. See carrier for details and pricing. ³ Surface Pro Signature Keyboard, Surface Pro Flex Keyboard, and Surface Slim Pen are sold separately. Pen storage and charging available on select Keyboards. ⁴ NFC available only on select devices; not available on Pro devices with 5G connectivity. ⁵ Microsoft 365 Copilot sold separately and requires a qualifying volume license or subscription. [Microsoft 365 Copilot for Enterprise—Pricing and Features](#) | [Microsoft 365, Copilot with commercial data protection](#) is available at no additional cost for users with an Entra ID enabled, eligible M365 license. Your AI-powered chat for the Web with commercial data protection | [Microsoft Copilot](#). ⁶ Salamander Designs Electric Lift Mobile Stands and APC™ Charge Mobile Battery (for Surface Hub 3 50") are sold separately. ⁷ Surface Pro 10 for Business (Wi-Fi models only) is certified as Imprivata Ready. Imprivata Enterprise Access Management is sold separately. Software license required for some features. ⁸ For connecting to external monitors or docks, Surface Laptop, Copilot+ PC, 13.8" and 15" devices include two USB-C®/USB4 ports; Surface Laptop, Copilot+ PC 13" devices include two USB3.2-C ports.

Enhancing operations to improve the patient experience

Hospital administrators and executives



Hospital administrators and executives face challenges such as:

- Overseeing the health of the business and well-being of patients
- Analyzing trends and complex financial models to make well-researched decisions
- Effectively collaborating with geographically dispersed colleagues and partners
- Effectively communicating budgets and strategic plans to top executives and the board
- Staying connected and productive when working from home or traveling
- Enabling new and secure AI experiences to accelerate market response
- Ensuring sensitive organizational data stays secure

Surface helps administrators and executives:

- Run enterprise software and complex reporting models without sacrificing mobility.
- Activate Microsoft 365 Copilot chat¹ intuitively through keyboard with a Copilot key², pen, touch, and voice to search, create, and summarize content faster.
- Look and sound great on every Microsoft Teams* call with high-end cameras, optimized microphones, and built-in Omnisonic speakers.
- View and share budget reports and strategic plans in stunning detail with PixelSense™ touchscreen displays.
- Engage intently while using keyboard and pen to take digital notes during planning meetings.
- Create the ultimate desktop experience by connecting to displays and docking station in the office or at home.
- Deliver enterprise-grade protection for sensitive data.

* Sold separately.

¹ Microsoft 365 Copilot Chat with commercial data protection is available at no additional cost for users with an Entra ID and an enabled, eligible Microsoft 365 or Office 365 license.

² Copilot key feature availability varies by market, see aka.ms/keysupport.

For hospital administrators and executives, we recommend:

Do it all



Choose **Surface Laptop Copilot+PC**

Smart, fast, and thin for the era of AI

Elevate administrators' productivity with lightning-fast speed and next-generation AI capabilities, like Microsoft 365 Copilot¹, powered by a choice of either Intel® Core™ Ultra (Series 2) or Snapdragon X Series processors. Longer battery life² keep administrators in the flow of work—all within an ultra-slim design and a choice of 13", 13.5", and 15" touchscreens. They can also connect to external monitors⁶ in their office and at home. A Secured-core PC with Microsoft Pluton elevates Windows 11 security benefits for employees handling the most sensitive data.

[Learn more >](#)

Need more power?



Choose **Surface Laptop Studio 2**

Our most powerful Surface laptop

Fuel inspiration and ideas on a powerful Surface Laptop with 13th Gen Intel® Core™ processors built on the Intel® Evo™. Speed through the most intensive, business-critical desktop software like Adobe® Premiere® Pro, Photoshop®, Autodesk® AutoCAD®, Dassault SOLIDWORKS™ and more.* Take digital notes during planning meetings like you would with pen on paper with Surface Slim Pen³ on the vibrant, sharp 14.4" touchscreen⁴ with refresh rate up to 120Hz.

[Learn more >](#)

Give remote participants a seat at the table



Choose **Surface Hub 3**

More inclusive meetings and richer collaboration

Give hybrid teams and remote participants a more inclusive way to meet with a modern, all-in-one collaborative canvas and Microsoft Teams*-certified meetings platform. Make any space a teamwork space with a 50" or 85" large screen device that can be wall-mounted or mobile (with stand + battery⁵). Present to onsite and remote meeting participants simultaneously with AI-powered Surface Hub Smart Camera that auto frames the video feed for remote participants, giving them the best possible view of the room. Whiteboard budget and strategic plans using the Surface Hub Pen and Microsoft Whiteboard.*

[Learn More >](#)

¹ Microsoft 365 Copilot sold separately and requires a qualifying volume license or subscription. [Microsoft 365 Copilot for Enterprise—Pricing and Features | Microsoft 365](#). Copilot with commercial data protection is available at no additional cost for users with an Entra ID enabled, eligible M365 license. Your AI-powered chat for the Web with commercial data protection | [Microsoft Copilot](#).

² Battery life varies significantly based on usage, network and feature configuration, signal strength, settings and other factors. See [aka.ms/SurfaceBatteryPerformance](#) for details.

³ Surface Slim Pen sold separately.

⁴ Surface Laptop Studio 2 display has rounded corners within a standard rectangle. When measured as a standard rectangular shape the screen is 14.36" diagonally (actual viewable area is less).

⁵ Salamander Designs Electric Lift Mobile Stands and APC™ Charge Mobile Battery (for Surface Hub 3 50") are sold separately.

⁶ For connecting to external monitors or docks, Surface Laptop, Copilot+ PC, 13.8" and 15" devices include two USB-C®/USB4 ports; Surface Laptop, Copilot+ PC 13" devices include two USB3.2-C ports.

* Sold separately.

Trust at every layer with Microsoft Surface

Healthcare providers need secure devices, and Microsoft Surface devices provide advanced security out of the box with tightly integrated hardware, software, firmware and identity protection layers. Microsoft uses a layered security approach, with chip-to-cloud security that includes chips and components designed and built by Microsoft, factory security protocols and inspections, Advanced Windows Security features enabled by default, and comprehensive remote management controls.

Surface powered by Microsoft 365¹ helps improve enterprise security by simplifying IT operations through its Enterprise Mobility and Security (EMS) platform, which includes products such as Windows Autopilot, Microsoft Entra, and Microsoft Intune. In addition, Secured-core PC, now available on most Surface devices, is designed to elevate the benefits of Windows 11 security, providing additional hardware and software protection for workers that handle the most sensitive data in your organization.

Hardware

Most Surface for Business devices use TPM 2.0 chips to implement a secure, sandboxed environment for storing passwords, PIN numbers, and certificates. Our latest Copilot+ PCs, Surface Pro and Surface Laptop, include Pluton security processors to provide the highest level of protection directly in the CPU, making it more difficult for attackers to access even if they physically possess the device. Surface devices are also designed to use Windows Hello for secure biometric authentication.



Built secure

- Designed according to Zero Trust principles
- End-to-end secure supply chain
- Enterprise-ready compliance



trusted at every layer to protect users and data

- Proactive protection and control with Microsoft firmware and UEFI platform
- Secure startup through hardware root of trust
- Secured-core PC features protect against sophisticated attacks



- Advanced Windows 11 Pro security features enabled by default
- Verify identity with biometric and passwordless authentication
- Unified updates enhance performance and protection



with ultimate control

- Flexible, integrated endpoint management from Microsoft
- Surface-specific tools and services
- Streamlined lifecycle from deployment to decommission

Firmware

Microsoft writes its own Unified Extensible Firmware Interface (UEFI)² which enables IT to manage firmware through Intune and Windows Updates and enable and disable hardware components through Surface Enterprise Management Mode (SEMM) and Device Firmware Configuration Interface (DFCI), so you can reduce risk at the firmware level.

While traditional UEFI implementations require physical configuration, DFCI securely enables zero-touch remote configuration of these settings and is built on Intune and authorized by Windows Autopilot. DFCI provides a straightforward way to easily configure hardware settings, such as disabling cameras and microphones, or disabling boot to USB on Surface devices. These settings cannot be bypassed by a physical attacker or from the Operating System-level because the checks happen even before the system boots an OS.

Operating System

Surface enables Windows 11 security features from the factory. Virtualization-based security (VBS) and Hypervisor Code Integrity (HVCI) help provide better protection against common and sophisticated malware by performing sensitive security operations in an isolated environment. BitLocker encryption protects your business information even on lost or stolen devices.

¹ Microsoft 365 requires paid subscription or qualifying volume license.

² [Find out more](#) about managing Surface UEFI settings and Surface devices on which DFCI is enabled.

Advanced deployment and management

IT teams need a modern approach to device management, one that seamlessly integrates all components, from the chip to the cloud. Surface has been designed with built-in support for simplified modern management of the entire device lifecycle.

Zero-Touch Deployment

Windows Autopilot automates all stages of the device lifecycle, both for IT and users. A Surface device can go straight from Microsoft to the end user completely configured. Surface devices are purpose-built for zero-touch deployment and optimized to provide the most straightforward, friction-free, and powerful interoperability with the diverse collection of Microsoft 365* capabilities.

“ We’ve deployed EMS, including Intune and Endpoint Manager, which lets us control every device. With these technologies in place, we’re a lot less worried about security. ”

– Chris Dury, Chief Information Officer,

[ECH Australia](#)



Surface Pro, Copilot+ PC, showing Surface Management Portal in Edge

Management during use and retirement

Every Surface component, from firmware to Windows 11 policy settings, can be managed by Microsoft Intune* and updated via Windows Update for Business. Using Intune, IT can also wipe a device clean, whether it was lost or stolen or assigned to a different user. After a wipe, the device is reset to the out-of-box experience, at which point proper credentials are once more required for setup if the device is redeployed. Surface Management Portal is a new centralized solution for IT admins to self-serve, manage, and monitor Surface devices at scale in Intune.

In addition, Surface includes purpose-built tools for diagnostics and tuning that can automatically fix issues, assist with troubleshooting, and optimize functionality from brightness control to battery usage. The Surface Diagnostic Toolkit (SDT) for Business, for example, enables IT administrators to quickly investigate, troubleshoot, and resolve hardware, software, and firmware issues with Surface devices — across the network.

Surface also integrates into the Microsoft 365 security stack to detect vulnerabilities across the globe and automatically protect devices—even while they are asleep. Surface devices implement a Modern Standby low-power state that allows devices to appear asleep, drawing very little power, but also listening for updates via Windows Update for Business and application data streams like email. This enables a Surface on battery power to achieve a long standby battery life while also staying up-to-date on application data, and automatic pushes of security updates even down to the UEFI.

* Sold separately. Microsoft Intune requires qualifying volume license and/or subscriptions.

Surface and sustainability

At Microsoft, we believe the needs of our customers can co-exist with the needs of our planet. Microsoft has a commitment to be carbon negative, water positive, and zero waste by 2030¹. We know that Surface plays a key role in helping the company achieve these goals, which is why we have clear strategies and goals for embedding sustainability within our devices and our supply chain, making sustainability a core part of our product promise and design language. For example, Microsoft has set a goal for 100% recyclable Surface devices and product packaging by 2030.

Our newest commercial products, like our Surface Copilot+ PCs, exemplify our commitment to designing all our products with sustainability in mind.

- **More recycled materials:** Surface Copilot+ PCs feature 100% recycled aluminum alloy and 100% recycled rare earth metals.⁴
- **Lower carbon emissions:** We reduced carbon emissions by 78% per enclosure on the latest Surface Copilot+ PCs.⁵
- **Supply chain integrity:** To meet our goal of 100% carbon-free electricity by 2030, 40% of our key device suppliers have already transitioned to CFE in FY24.
- **More replaceable components:** Surface Pro and Surface Laptop have multiple replacement components, maximizing their repairability and use. They also have built-in access to digital repair guidance via QR codes.⁶

To increase transparency for customers and stakeholders, we publish Life Cycle Assessment results that are contained in our [Eco Profiles](#), along with information about the product's material composition, energy consumption, packaging, ecolabels, product recycling, and other environmental attributes. We also developed a new tool for our Commercial customers called the [Surface Emissions Estimator](#).³ The tool makes it easier for Commercial customers to understand the estimated emissions associated with a Surface device or accessories based on use and locations.

“ At the heart of our approach is an understanding that sustainability is not simply a set of isolated initiatives, but a fundamental principle that must be integrated into every aspect of our business. ”

- Brad Smith, Vice Chair and President, and
Melanie Nakagawa, Chief Sustainability Officer,
[2025 Environmental Sustainability Report](#)

Surface Laptop Studio
in transition to Stage
Mode with Black
Surface Slim Pen*



Visit [Surface sustainability](#) to learn more.

*Sold separately ¹ [Earth Day 2024: Our commitment to sustainability](#). ² Download [Eco Profiles](#) for Surface devices. ³ The Microsoft [Surface Emissions Estimator](#) is only available in certain markets and only applies to Surface devices currently for sale. Contact your Surface seller for more details. ⁴ Surface Pro 10, Surface Pro (11th Edition) enclosure includes Bucket and Kickstand. 100% recycled aluminum alloy in Bucket and Kickstand. Surface Laptop 6 enclosure includes A Cover, C Cover and D Bucket. 100% recycled aluminum alloy in A Cover. Surface Laptop (7th Edition) enclosure includes A Cover, C Bucket and D Cover. 100% recycled aluminum alloy in A Cover and C Bucket. 100% recycled rare earth metals in magnets. Based on validation performed by Underwriter Laboratories, Inc. using Environmental Claim Validation Procedure, UL 2809-2, Second Edition, June 20, 2024. ⁵ As compared to a baseline no-interventions scenario modeling the same products without any sustainability interventions in the production phase of the devices. Surface Copilot+ PCs include Surface Pro (11th Edition) and Surface Laptop (7th Edition). ⁶ Surface Pro 10, Surface Laptop 6, Surface Pro (11th Edition), and Surface Laptop (7th Edition) contain a built-in QR code and clear visual icons. Replacement components available online through [Microsoft Store](#) and [iFixit](#) for out-of-warranty repair. Components can be replaced by individuals with the knowledge and experience to repair electronic devices following [Microsoft's Service Guide](#). Microsoft tools (sold separately) may also be required. Availability of replacement components and service options may vary by product, market and over time. See [Self-repair information for your Surface device - Microsoft Support](#). Opening and/or repairing a device can present electric shock, device damage, fire and personal injury risk, and other hazards. Use caution if undertaking self-service repairs. Unless required by law, damage caused during repair is not covered under Microsoft's Limited Hardware Warranty or protection plans.

Don't let outdated PCs put your business at risk

Support for Windows 10 ends on October 14, 2025. When support ends, you'll no longer receive Windows feature and security updates, which could potentially put your organization at risk.

Don't wait to upgrade to Windows 11, refresh your old devices with Microsoft Surface today. Surface is designed to work with Windows 11, providing benefits like reduced help desk calls, improved productivity and security, and easier deployment. And Surface devices paired with Microsoft 365 are worth **almost 3x the investment costs** over three years.¹

Protect against evolving threats

Outdated devices can be less secure and put your business at risk. Surface devices come with chip-to-cloud security for layers of security by default, and Windows 11 (Pro or Enterprise) will continue to receive the latest security and feature updates.

Simplify deployment

Plan now to prepare and ensure a smooth transition to Windows 11. Take advantage of Windows Autopilot and Surface for zero-touch deployment. Windows 11 (Pro and Enterprise) is also designed for compatibility with your existing apps and hardware, making it easy to deliver a productivity upgrade to your employees. Plus, resources like the [App Assure](#) program, available at no additional cost for eligible customers, can help with each step of your transition.

Increase your competitive edge

Surface devices are optimized to run Windows 11 (Pro and Enterprise), providing the performance and latest AI-enhanced features to help supercharge insights and efficiency and accelerate innovation. Microsoft 365 Chat Copilot is a finger click away with the new Copilot key² on the Surface keyboard.

Control costs and elevate employee satisfaction

Older devices can take more time to maintain, which could expose you to costly security risks and dampen employee productivity and satisfaction. Surface devices are designed to work with Microsoft 365³, enabling them to be easier to maintain, help protect against costly security risks, and help improve employee satisfaction.



More resources

- ➔ [IDC Executive Brief](#): "The Refresh Imperative: The Value of Deploying New, More Secure, Generative AI Centric PCs Ahead of the Windows 10 End of Service"
- ➔ [Forrester Study](#): Total Economic Impact™ of Windows 11 Pro Devices
- ➔ [Windows 11 Pro for business](#)
- ➔ [Explore FastTrack support](#) for deploying Surface devices with Windows 11
- ➔ [See how other customers experienced a smooth upgrade from Windows 10 to Windows 11 Pro](#)
- ➔ [Review Windows web page](#) and read [IT Pro blog](#) and [How to prepare for Windows 10 end of support by moving to Windows 11 today blog](#)

¹ IDC White Paper, commissioned by Microsoft, [Evaluating the Business Case of Microsoft Surface](#), doc #US49453722, September 2022

² Copilot key feature availability varies by market, see [aka.ms/keysupport](#).

³ Microsoft 365 requires paid subscription or qualifying volume license.

Modern device strategy for Healthcare Providers

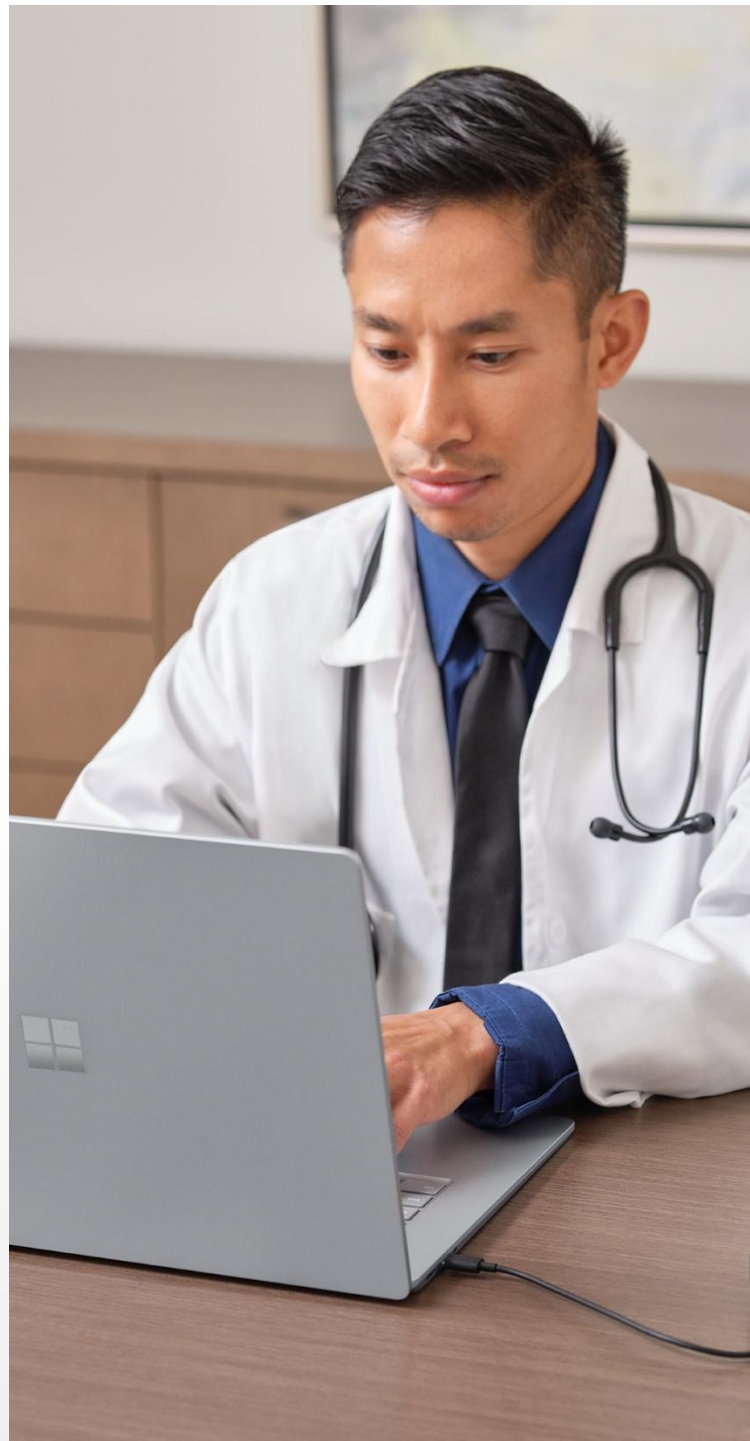
By choosing Surface, healthcare providers can implement a modern device strategy for all their employees. Surface is designed for mobile and flexible work and built for teams. With a variety of devices and price points that meet the needs of a diverse workforce, your organization can standardize procurement and provide a premium experience to all employees through thoughtfully designed and versatile devices, industry-leading security and remote management controls, and a commitment to sustainable business practices.

“ I asked the team if they could find a better value proposition than what Microsoft offered. They came back and said that Microsoft offered the best option because of total cost of ownership (TCO), the life of the device, the quality of the device, and the integrations. ”

- *Cameron Chojnacki, Director of Technical Solutions and Information Security,*
[Dynacare](#)

“ Using Surface Pro devices, we’ve opened up opportunities to provide better healthcare, better patient access, and better ways to overcome personnel shortages than ever before. ”

- *Darin Anderson, Executive Director for Telehealth,* [Banner Health](#)



Visit [Surface for Business](#) to identify which Surface devices are best for your employees.