

HPE MORPHEUS VM ESSENTIALS SOFTWARE

Break free from vendor lock-in and simplify management across both existing VMware clusters and the embedded HVM hypervisor

HPE Morpheus VM Essentials Software is a unified solution that enables customers to simplify their VMware® deployments and replatform workloads to the HVM hypervisor at your own pace to reduce cost, complexity, and lock-in.

Offerings incorporating HPE Morpheus VM Essentials Software

- **Stand-alone software:** Flexibility to deploy on existing or new hardware not bundled into a private cloud solution. Available now with support for HPE ProLiant Server, HPE Alletra Storage MP. Validated with third-party servers from Dell and storage from NetApp with more to follow.
- **HPE GreenLake for Private Cloud Business Edition:** A fully integrated, self-managed private cloud built on the HPE Alletra dHCI platform with automated setup and simplified lifecycle management through HPE GreenLake cloud.
- **HPE Private Cloud Enterprise:** A scalable, pay-per-use,* enterprise-grade solution delivered as a fully managed service. Built for both cloud-native and traditional applications, it supports the self-service provisioning of bare metal, virtual machines (VMs), and container services.

A unified approach to virtualization

Morpheus Data, recently acquired by Hewlett Packard Enterprise has been an award-winning leader in private and hybrid cloud orchestration for several years, turning both VMware and KVM-based deployments into private clouds for hundreds of customers and millions of application workloads. Now, their technology is powering the new HPE Morpheus VM Essentials Software available standalone and integrated into HPE Private Cloud Business Edition.

VM Essentials is a new virtualization software solution that allows customers to provision and manage HVM (KVM based) and VMware-based VMs from a single intuitive interface.

The solution comes with the KVM-based HVM hypervisor that is enhanced to include enterprise-grade cluster management with capabilities such as high availability, live migration, distributed workload placement, integrated data protection, secure hardening, and external storage support.

To enable flexibility for those continuing to host VMware-based applications, VM Essentials can also be used to connect and manage existing VMware clusters. This means unified management and simple VM provisioning across both HPE HVM hypervisor and VMware ESXi™ so you can provision workloads on demand to the right environment, on your terms, with zero lock-in. When you're ready, you can use the included toolset to convert existing VMware images to VM Essentials.

VM Essentials is available as stand-alone software and is available as an embedded part of HPE Private Cloud Business Edition.

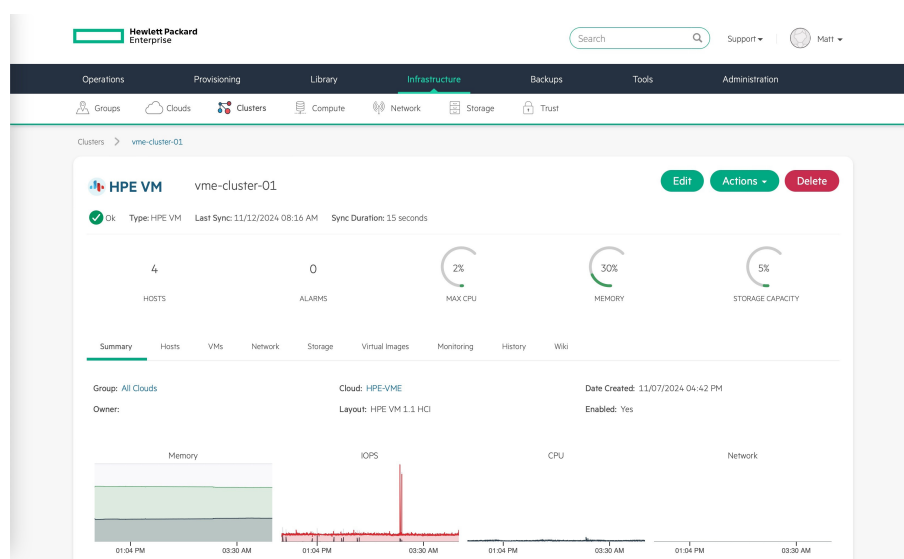


Figure 1. HPE Morpheus VM Essentials Software

* May be subject to minimums or reserve capacity may apply

“HPE Morpheus VM Essentials provides a real alternative to the status quo. With support for my existing hypervisor and a flexible path for future workloads, we can modernize our business for operational and resource efficiency.”

– **Chris Macken**, Vice President—IT Operations and Security, Cambrian Credit Union



The challenge is real

99%

of survey respondents express concern about the impact of Broadcom's acquisition of VMware on their business.¹

32%

of people are considering leaving VMware.²

¹ “High Levels of Customer Unease Around VMware-Broadcom Deal: Report,” Redmond Channel Partner, June 2024.

² “VMware Under Broadcom: Challenges, customer impacts and choices,” ITAA, June 2024.

Upgrade your cloud operating model with the full HPE Morpheus Enterprise Software suite

Today's enterprise platform teams have requirements that go beyond virtualization; they also need to enable developer agility as they modernize applications to take advantage of containers and cloud-native services, including those available from public cloud providers.

With HPE Morpheus Enterprise as the unified orchestrator and control plane for the HPE private cloud portfolio (HPE Private Cloud Enterprise, HPE GreenLake for Private Cloud Business Edition, and HPE Private Cloud AI), you can easily start with HPE Morpheus VM Essentials and then upgrade to the full HPE Morpheus Enterprise Software platform. This adds support for additional hypervisor options, Kubernetes clusters, and public cloud workloads, as well as robust private and hybrid capabilities including:

- **Self-service application provisioning:** Developers, data analysts, and other users can provision services or stacks through application programming interface (API) / CLI, GUI catalog, or IT service management (ITSM) plug-in
- **Fine-grained role-based access control:** Govern users with permissions and policies to create a secure and budget-friendly paved-road without losing agility
- **Advanced lifecycle and day 2 automation:** Implement virtually any scripted task in app lifecycle phases plus build operational workflows and jobs to streamline everyday IT
- **Cloud cost management and optimization:** Discover existing instances, optimize resource use, centralize multicloud usage reporting, and enable showback/chargeback

HPE Morpheus VM Essentials Software

Optimizing cost of virtualized infrastructure

HPE Morpheus VM Essentials includes the HVM hypervisor but also supports your existing VMware licenses, providing ease of use, agility, and a unified VM-vending experience for VM Essentials and VMware clusters. The KVM-based stack is ideal for those exploring alternatives to VMware, migrating workloads as you're ready.

Over the course of 2025, HPE continues to ramp performance testing and solution engineering to provide specific recommendations and reference architectures for common workloads and an expanded set of target use cases.

HPE Morpheus Enterprise is well known for its integration into dozens of third-party technologies. VM Essentials leverages that same pluggable abstraction framework to enable partner ecosystem integration, such as with backup providers Cohesity, Commvault, and Veeam.

At launch, VM Essentials is offered under a term-based subscription license and is priced competitively on a per-CPU socket basis, with no extra charge for connecting existing VMware clusters. Contact your local sales team for pricing details on VM Essentials, HPE Private Cloud Business Edition, or the full HPE Morpheus Enterprise suite as an add-on or superset of VM Essentials functionality.

Learn more at

[HPE.com/us/en/solutions/virtualization](https://hpe.com/us/en/solutions/virtualization)

Visit [HPE.com](https://hpe.com)

[Chat now](#)

© Copyright 2025 Hewlett Packard Enterprise Development LP. The information contained herein is subject to change without notice. The only warranties Hewlett Packard Enterprise products and services are set forth in the express warranty statements accompanying such products and services. Nothing herein should be construed as constituting an additional warranty. Hewlett Packard Enterprise shall not be liable for technical or editorial errors or omissions contained herein.

VMware ESXi and VMware are registered trademarks or trademarks of VMware, Inc. and its subsidiaries in the United States and other jurisdictions. All third-party marks are property of their respective owners.

a00144027ENW, Rev. 3

HEWLETT PACKARD ENTERPRISE

hpe.com

