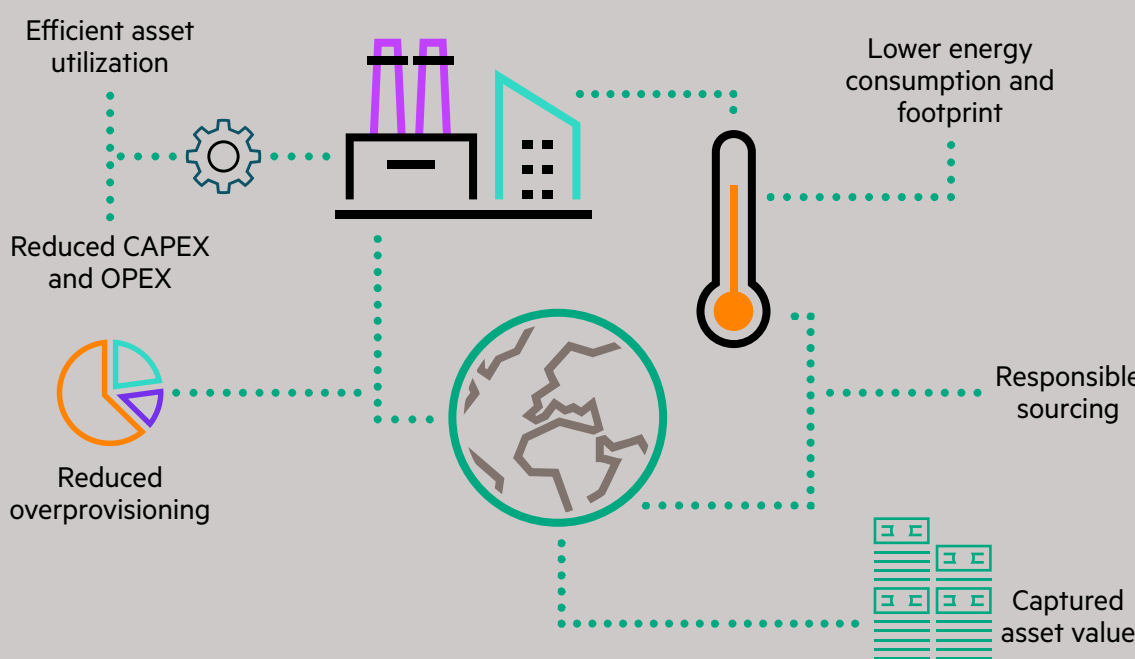


# DELIVERING BUSINESS OUTCOMES WITH SUSTAINABLE IT

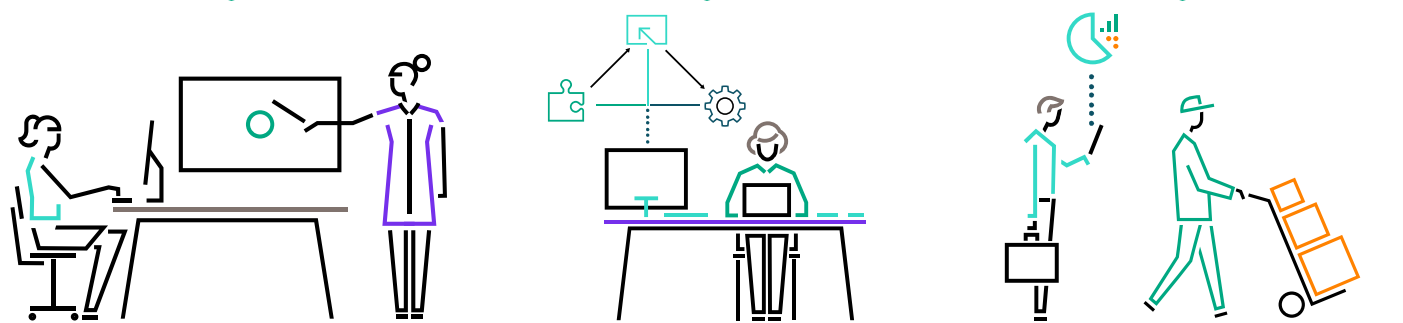
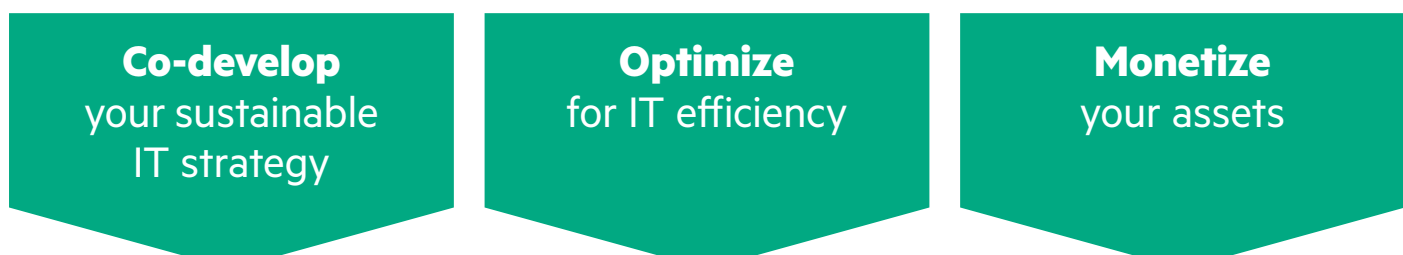


We enable customers to achieve their business and sustainability goals with an end-to-end sustainable IT strategy.

## How HPE sustainability leadership benefits you



## How HPE does it



Align your IT, business, and sustainability objectives to create an end-to-end sustainable IT strategy.

This involves gathering key stakeholders, identifying appropriate KPIs, and creating tools to measure and report progress.

Eliminate inefficiencies in your infrastructure to overcome power, space, and cooling constraints and reduce costs.

Our holistic approach addresses equipment efficiency, energy efficiency, resource efficiency, and software efficiency.

Use your existing infrastructure to create investment capacity, accelerate transformation, and drive greater sustainability.

Recapture any residual value through our product upcycling and recycling programs across the globe.

### Tools and resources

- [Sustainable IT purchasing guidelines](#)
- [IT sustainability white paper \(IDC\)](#)
- [Product carbon footprint reports](#)
- [HPE Power Advisor, energy consumption calculator](#)
- [IT lifecycle strategies white paper](#)
- [TCO and ROI calculators](#)
- [HPE Circular Economy Report \(for asset upcycling customers\)](#)
- [Top five considerations for ITAD](#)
- [HPE Asset Upcycling Services](#)
- [HPE Accelerated Migration](#)

**\$10M**

in energy costs saved by a single customer as a result of HPE Pointnext Services

**3.1M** assets returned to our Technology Renewal Centers

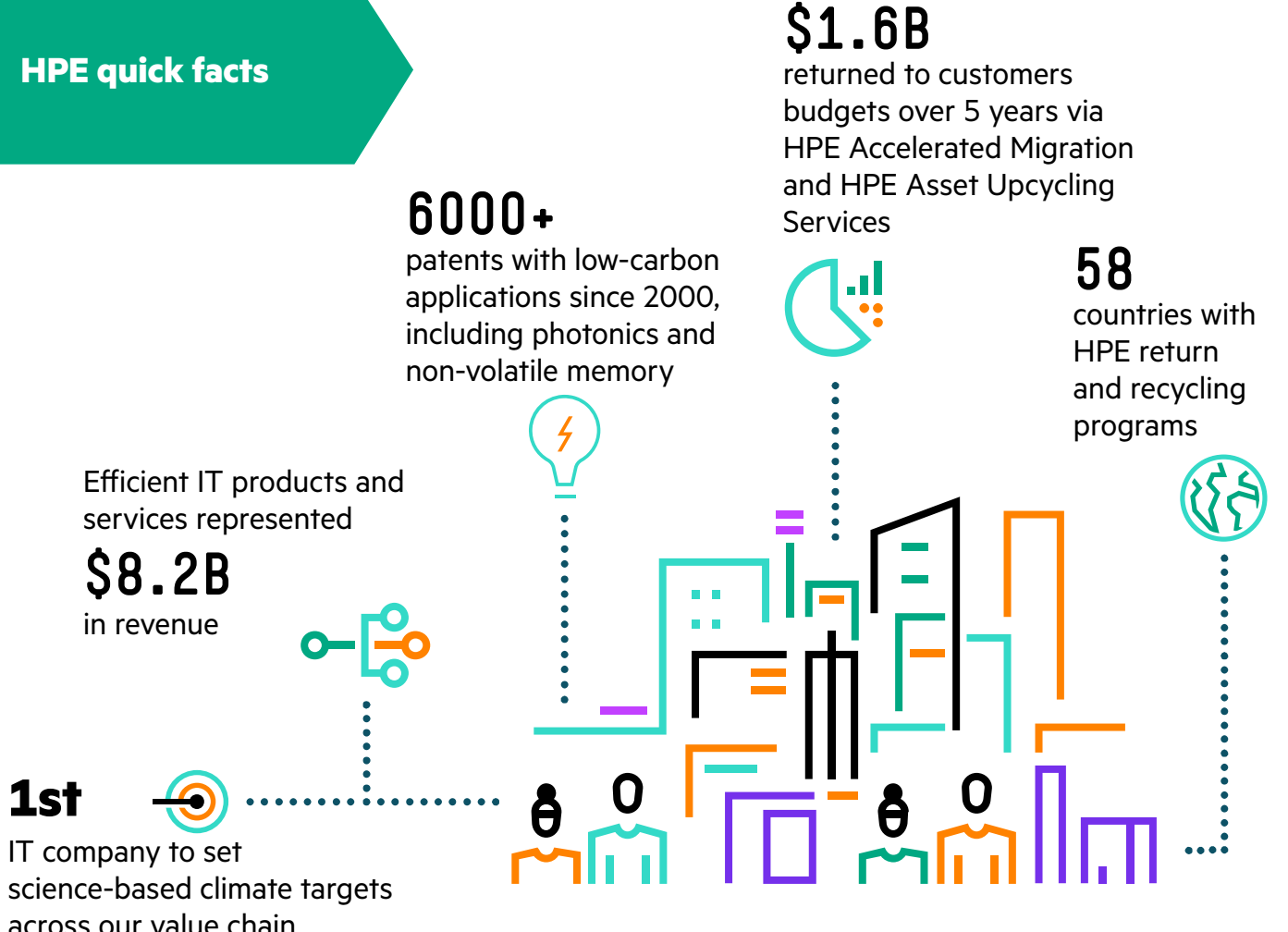
**87%** given a new life

The **HPE Apollo 2000 Gen10 Plus System** has captured **18** energy-efficiency world records achieving up to **54%** higher efficiency than other 4-node systems<sup>1</sup>

The **HPE Apollo 2000 Gen10 Plus system** provides up to **80** servers per 42U rack enabling up to **50%** infrastructure footprint savings compared to 1P/2P rack servers<sup>2</sup>

**HPC is offered as a service on HPE GreenLake**, which has enabled customers to reduce operational inefficiencies by up to **30%-40%**<sup>3</sup>

## HPE quick facts



Efficient IT products and services represented **\$8.2B** in revenue

**1st** IT company to set science-based climate targets across our value chain

**6000+** patents with low-carbon applications since 2000, including photonics and non-volatile memory

**\$1.6B** returned to customers budgets over 5 years via HPE Accelerated Migration and HPE Asset Upcycling Services

**58** countries with HPE return and recycling programs

## Why HPE?

HPE's 30-year history of leadership is unmatched by our competitors, including industry-first standards, targets, and coalitions.

We maintain industry leadership on the highest trusted ratings and rankings.

In 2020:

- EcoVadis Platinum
- Industry Leader, Dow Jones Sustainability Index
- CDP Climate A List

Learn more by contacting [lpssalessupport@hpe.com](mailto:lpssalessupport@hpe.com)

<sup>1</sup> SPEC and SPECpower\_ssj are registered trademarks of the Standard Performance Evaluation Corporation (SPEC); all rights reserved, see [spec.org](http://spec.org) as of March 15, 2021; 4-, 3-, 2-node configurations and 4-, 3-, 2-node 2-processor configurations for the overall, Linux®, and Windows categories.

<sup>2</sup> Annual energy cost and rack space calculated based on performance envelope of a 42U rack populated with HPE ProLiant XL225n Gen10 Plus servers running at 100% versus the energy and rack space required by competitor products to achieve the same performance. Average price for kWh = \$0.0693.

<sup>3</sup> A commissioned study conducted by Forrester Consulting, The Total Economic Impact™ of HPE GreenLake, May 2020.

**LEARN MORE AT**  
[hpe.com/livingprogress](http://hpe.com/livingprogress)

Make the right purchase decision. Contact our presales specialists.



Get updates

