


* All images in this datasheet are for illustrative purposes only.


INDOOR LG 136" LAEB SERIES LED SIGNAGE

All-in-one Essential Series

1 All-in-one LED Screen

 Easy Installation & Quick Maintenance



 Dedicated Accessories

 Power Saving Mode



All-in-one LED Screen

LG's All-in-one Essential series is a 136-inch large screen which is offered as an All-in-one package including an embedded controller. Eliminating the prejudice that LED displays are difficult and complex to install, the All-in-one Essential series doesn't require controller connections or module configuration. After a simple installation process, all you need to do is to turn on the screen with a remote control like home TV.

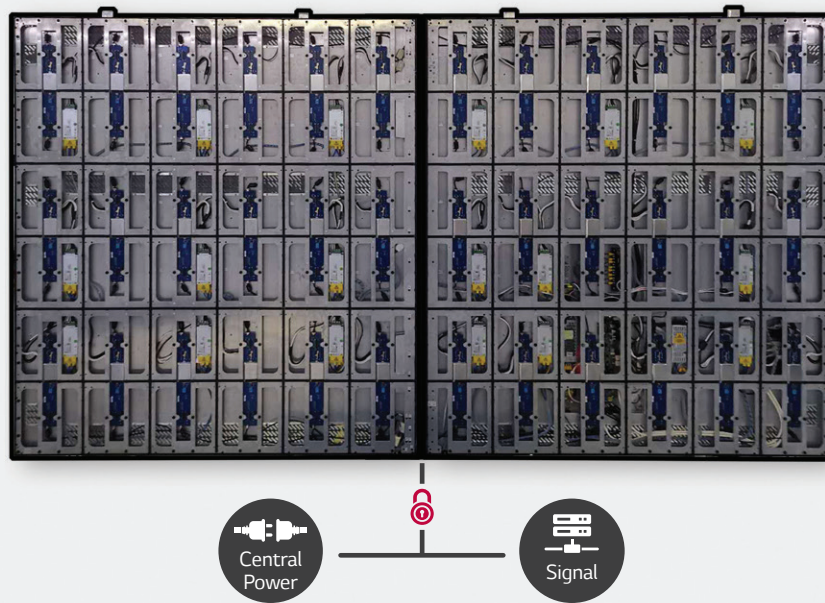
Included	Optional (Available for Purchase Separately)
<p data-bbox="293 1157 654 1182">» Flight Case & Landscape Wall Mount</p> 	<p data-bbox="906 1157 1395 1182">» Portable Stand with Motorized Height Adjustment</p> 

Dedicated Accessory Kits

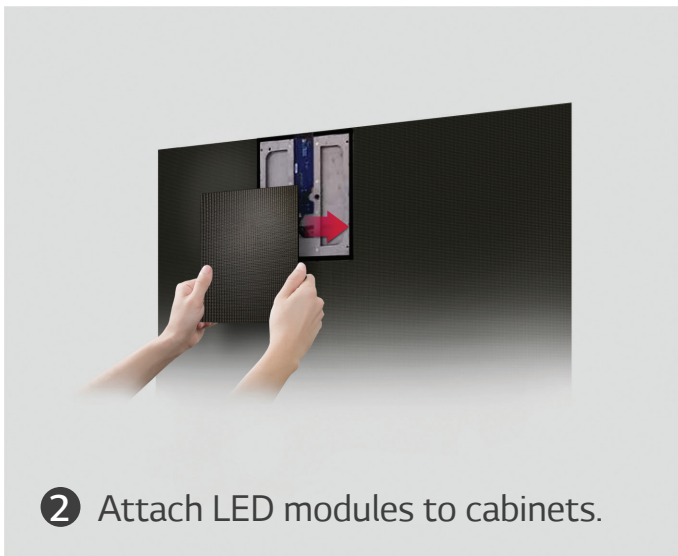
Unlike some signage products that are delivered in cardboard boxes wrapped on shipping pallets, this model ships ready-to-assemble in a professional, wheeled flight case making it easier to transport inside your facility without the need for a pallet jack. The all-in-one case includes every component necessary, including the landscape wall mount and tools for installation. Also available for this screen is a mobile stand on wheels. This optional accessory allows screen mobility after installation, so you can easily place it wherever the team needs to meet. The stand has a motorized height adjustment that allows you to easily change the height of the display over a foot and a half to comfortably accommodate either sitting or standing audiences.

Easy Installation

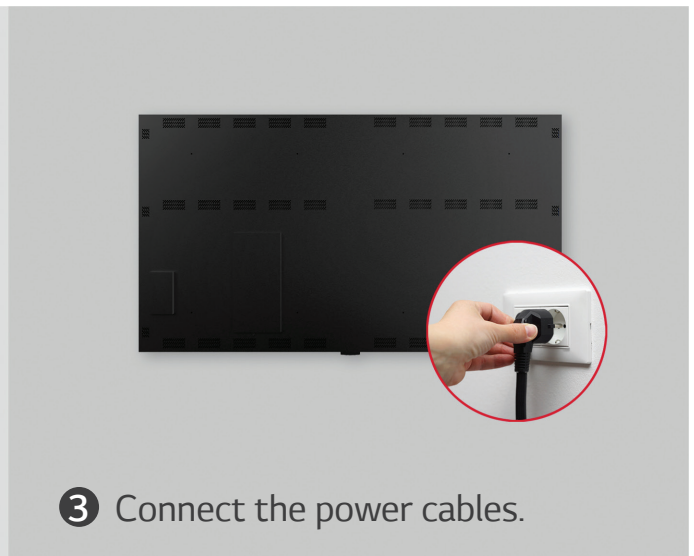
The installation process of the All-in-one Essential series is very simple. After securing two cabinets which are included in the flight kit, attach each LED display module to them. Lastly, plug in the power cable. This hassle-free installation saves time and labor, thereby making users handle the LED screen with ease. In addition, the fact that this massive 136" screen only uses two cabinets helps minimize variations and adjustments needed when fine-tuning the final physical setup. This means the installed screen will be one beautiful, uniform display.



- 1 Secure two cabinets after connecting main power/signals.



- 2 Attach LED modules to cabinets.



- 3 Connect the power cables.

* Fixing screws or installing wall mount / accessories is needed additionally.



Quick Maintenance

In case of failure related to the LED module or the system board, it can be serviced from the front. The LED module can be simply detached by the provided magnetic tool and replaced quickly without cabling.



Simple Power Connection

The LAEB series is operated with only two AC cables for a standard 110 Volt AC system, eliminating the need for complicated power connections and enabling neat installation.



* The above image is for illustrative purposes only.

Operating in a Humid Environment

The All-in-one Essential series can be operated under 90% RH* environment.

* Without condensation



Power Saving Standby Mode

When there is no input with remote control for a period of time, the screen turns off and the main circuit parts inside the LED cabinet go to a standby mode. This leads to saving power consumption.

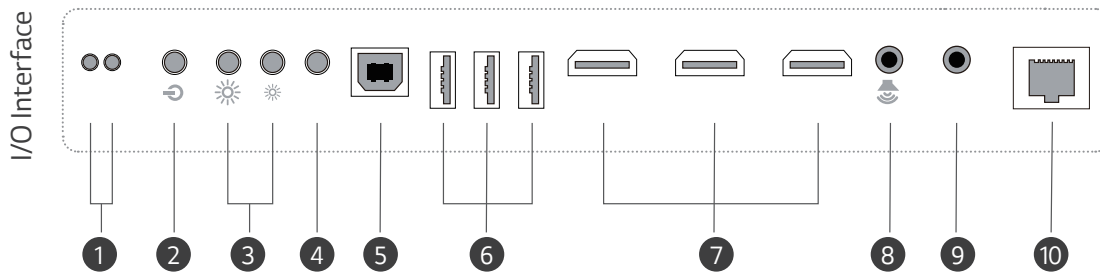
PRODUCT INFORMATION



All-in-one Essential Series

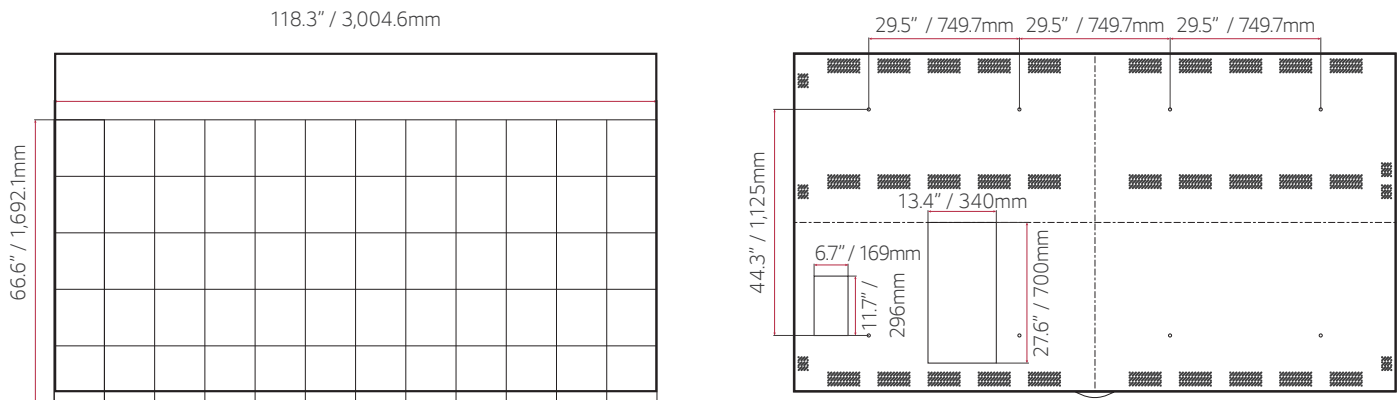
Inch	136"
Pixel Pitch	1.56 mm
Brightness	800 nits
Screen Resolution	1,920 × 1,080
Serviceability	Front
Controller	Embedded

CONNECTIVITY



- 1 Indicator: Standby/Running
- 2 ON/OFF (Standby)
- 3 Brightness +/-
- 4 Video source switch
- 5 System control
- 6 App / Video upload Control interface
- 7 HDMI IN × 3
- 8 Audio OUT
- 9 IR IN
- 10 LAN (Internet)

DIMENSIONS



SPECIFICATIONS

MODEL NAME	LAEB015	
PHYSICAL PARAMETERS	Pixel Configuration	3 in 1 SMD
	Pixel Pitch	1.56 mm
	Screen Resolution	1,920 × 1,080
	Module Dimensions (W × H)	250 × 281.25mm
	No. of Modules per Screen (W × H)	12×6 (Total 72)
	Screen Dimensions Including Bezel (W × H × D)	118.3" x 66.6" x 1.4" / 3,004.6 x 1692.1 x 35.5 mm
	Screen Dimensions Without Bezel (W × H × D)	118.1" x 66.4" x 1.4" / 3,000 x 1687.5 x 35.5 mm
	Screen Surface Area	5.06 m ² / 54.5 ft ²
	Screen Weight	288.8 lbs / 131 kg
	Physical Pixel Density pixels/m ²	409,600 pixels/m ²
	Flatness of Cabinet	±0.2 mm
	Cabinet Material	Aluminum
	Service Access	Front
OPTICAL SPECIFICATIONS	Brightness	800 nits
	Color Temperature	6,500
	Visual Viewing Angle (H × V)	160° × 160°
	Brightness Uniformity	98%
	Color Uniformity	±0.015 Cx,Cy
	Contrast Ratio	3,000:1
	Processing Depth	16 bit
ELECTRICAL SPECIFICATIONS	Max Power Consumption Per Cabinet	3,000 W
	Avg Power Consumption Per Cabinet	1,200 W
	Max Power Consumption Per Unit Area	593 W/m ²
	Power Supply Voltage	100 to 240 V
	Frame Rate	50 / 60 Hz
	Refresh Rate	≥2,880 Hz
OPERATION SPECIFICATIONS	Lifetime (Half Brightness)	100,000 hours
	Operating Temperature	32°F to 104°F / 0°C to +40°C
	Operating Humidity	< 90% RH (without condensation)
	IP Rating (Front / Rear)	IP40 / IP20
REGULATORY CERTIFICATIONS	FCC, CE	
ENVIRONMENTAL COMPLIANCE	RoHS, REACH	
CONTROLLER	Embedded	

