

# YOGA SLIM 7 CARBON (14")

## LIGHT. POWERFUL. CINEMATIC.

Light, Powerful, and Cinematic. The Yoga™ Slim 7 Carbon is the world's lightest 14" OLED laptop<sup>1</sup>. Housed in an ultra-lightweight carbon fiber reinforced chassis that brings together aerospace-grade lightness and military grade toughness. The Slim 7 Carbon is driven by best-in-class AMD Series processors, optional NVIDIA® GeForce® MX450 graphics, and an unbeatable 14 hours of battery life, all enhanced with the Lenovo AI Core processor. Submerge yourself in the vibrant 16:10 QHD+ 90 Hz OLED display for unparalleled productivity and entertainment.



### WHY YOU SHOULD BUY THE LENOVO YOGA SLIM 7 CARBON (14")



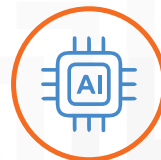
#### Aerospace-grade light, military-grade tough

Representing the pinnacle of hardware engineering, the Yoga Slim 7 Carbon's chassis is intricately crafted from premium aerospace-grade magnesium alloy reinforced with multi-layer carbon fiber, achieving extraordinary lightness and military-grade resistance and durability. This incredibly light 1.1 kg package sports an ultra slim 14.9 mm profile with casing tapers at the edges with rear curves for a smooth and effortless grip.



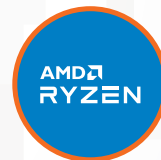
#### Mastering new depths of immersion and entertainment

Experience a new level of productivity and entertainment immersion with a 14" QHD+ OLED display panel. Compel visual excellence with Dolby Vision® HDR and true-to-life color reproduction of 100% DCI-P3 color space, all while experiencing more usable screen afforded by 16:10 aspect ratio and 90 Hz silky smooth visual mobility. Submerge yourself in 3D sound space with Dolby Atmos® moving audio boosted by a smart amp across four strategically positioned speakers.



#### Powered by Lenovo AI Core

Smart computing is embedded deeply in the DNA of the Yoga Slim 7 Carbon via deep-learning neural networks powered by Lenovo AI Core. This dedicated AI chip drives solutions that enhance user-experience, strengthen security, and optimize power management.



#### Supreme Performance. Infinite Possibilities.

Inspiration has met its match. Whether you're editing 4K footage or crafting a complex design, speed up rendering and encoding tasks. With the world's most advanced mobile processor technology, AMD Ryzen™ 5000 Series Mobile Processors let you save time and get back to what you do best—create<sup>2</sup>. Choose between integrated AMD Radeon™ Graphics or a dedicated NVIDIA® GeForce® MX450.



#### All-day battery with Rapid Charge Express

Work, create, and entertain all day without ever having to worry about power with the Yoga Slim 7 Carbon's astonishing 14 hours of battery life. Charge 3 hours of battery life in only 15 minutes with Lenovo's Rapid Charge Express.

<sup>1</sup> Based on research conducted internally by Lenovo as of August 10<sup>th</sup> 2021 of all major PC manufacturers shipping more than one million units worldwide annually.

<sup>2</sup> As of December 2020, the Ryzen 5000 series mobile processors are the "Most advanced mobile processors", defined as the highest-performing single-thread and multi-thread performance available on x86 mobile processors enabled by superior 7nm manufacturing technology on a small node. C2M-26.



# YOGA SLIM 7 CARBON (14")

## SPECIFICATIONS

Yoga Slim 7 Carbon 14ACN-6\*

### PERFORMANCE

#### Processor

AMD Ryzen™ 7 5800U Mobile Processor  
AMD Ryzen™ 5 5600U Mobile Processor

#### Operating System

Windows 11

#### Graphics

DIS : NVIDIA® GeForce® MX450;  
2 GB GDDR6 VRAM  
UMA : AMD Radeon™ Graphics

#### Memory

LPDDR4X : 8 GB / 16 GB Dual Channel

#### Storage

SSD PCIe M.2 : 512 GB / 1 TB

#### Camera

IR Camera + TOF

#### Audio

4 Speakers with Dolby Atmos® Speaker System +  
Smart AMP + DSP

#### Battery<sup>1</sup> (61 WHr)

MobileMark® 2018 : Up to 14.5 Hours

Rapid Charge Express : 15 min. / 3 Hours

### DESIGN

#### Display

14" QHD+ (2880 x 1800) OLED, 16:10,  
100% DCI-P3, 400 nits, 60/90 Hz,  
91% AAR (T/L/R 3.9 mm), Glass (Default)  
Touch (Optional) - Corning Gorilla®  
TÜV LBL Eyesafe® + Eye Comfort, SGS  
Vesa Certified DisplayHDR™ 500 True Black

#### Dimensions (W x D x H)

(mm) : 313 x 215 x 14.9  
(inches) : 12.3" x 8.5" x 0.59"

#### Weight

Less than 1.1 kg (2.4 lbs)

#### Hinge

175°+/-5°

#### Color

Cloud Grey

### WOW FEATURES

#### Standard

Alexa<sup>2</sup>  
Lenovo Smart Assist<sup>3</sup>  
Lenovo AI Core  
Adaptive Color Sensor

### CONNECTIVITY

#### WLAN

2x2 WiFi 6E (802.11 ax)  
2x2 WiFi 6 (802.11 ax)

#### Bluetooth®

Bluetooth® 5.1

#### Input/Output (I/O) Ports

1 x USB Type-C™ (USB 3.2 Gen 1)<sup>4</sup>  
2 x USB Type-C™ (USB 3.2 Gen 2 +  
DisplayPort™ 1.4 + PD 3.0)<sup>4</sup>  
1 x Audio Jack

### PRELOADED SOFTWARE

- Lenovo Vantage
- Microsoft Office 2021
- McAfee® LiveSafe™
- Dolby Vision®
- Alexa<sup>2</sup>

<sup>1</sup> All battery life claims are approximate and based on two methods of testing: MobileMark® 2018 battery life benchmark and continuous 1080p video playback on the latest update of Windows 10 (with 150 nits brightness and default volume level). Actual battery life will vary and depends on many factors such as product configuration and usage, software use, wireless functionality, power management settings, and screen brightness. The maximum capacity of the battery will decrease with time and use.

<sup>2</sup> Available in select regions.

<sup>3</sup> Lenovo Smart Assist: Smart Display (Glance notifies you when someone's reading over your shoulder); Smart Player (video pauses when you walk away); ITS 5.0 (Q-Control) battery optimization; instant bootup.

<sup>4</sup> The actual transfer speed of the USB 3.2 will vary and, depending on many factors, such as the processing capability of host and peripheral devices, file attributes and other factors related to system configuration and your operating environments, will be slower than a speed of 20 Gbit/s.



## OPTIONS & ACCESSORIES



Lenovo Yoga Mouse with Laser Presenter



Lenovo Yoga Active Noise-cancellation Headphones



Lenovo Yoga Sleeves

## LENOVO SERVICES\*

#### Lenovo Premium Care

Premium Care is the hassle-free solution for all your technical support needs. Upgrade your standard warranty with our front-of-the-queue customer support service and get 24/7 real-person support from experts who provide solutions on your first contact.

#### Lenovo Smart Performance

Smart Performance Services within Lenovo Vantage will keep your system running at optimum performance and proactively fix issues that affect PC performance, internet performance, and security.

#### Lenovo Accidental Damage Protection

Avoid the hassles of unexpected damage & repair costs. With coverage for drops, spills, electric surges, and broken LCD screens, accidental damage protection makes it easy to repair to your PCs and ensures your device is up and running fast.

#### Lenovo Warranty Extensions (1-to-3 Years Duration)

Gain complete peace of mind by extending your warranty to minimize unexpected expenses and repair costs.

\* The availability of the services would vary from markets to markets.

\* Example of Lenovo marketing naming convention

Yoga	Slim	7	Carbon	14	ACN	6
Sub-brand	Series	Position	Position	Screen size or volume (litre)	Platform (e.g. ABM = Beema)	Generation

#### AMD platform codes

Bristol Ridge-L: ABL, Beema: ABM, Bristol Ridge: ABR, Carizzo-L: ACL, Carizzo: ACZ, Godavari: AGR, Kaveri: AKV, Stoney Ridge: ASR, Stoney Ridge: AST (NB), Summit Ridge: ASU, Raven Ridge: ARR, Picasso: API, Ryzen: ARE, Dali: ADA, Matisse: ARH, Cezanne H: ACH, Cezanne U: ACN.

[WWW.LENOVO.COM](http://WWW.LENOVO.COM)

Lenovo reserves the right to alter product offerings and specifications at any time, without notice. Lenovo makes every effort to ensure accuracy of all information but is not liable or responsible for any editorial, photographic or typographic errors. All images are for illustration purposes only. For full Lenovo product, service and warranty specifications visit [www.lenovo.com](http://www.lenovo.com). Lenovo makes no representations or warranties regarding third party products or services. ©2021 Advanced Micro Devices, Inc. All rights reserved. AMD, the AMD Arrow logo, Athlon, Radeon and combinations thereof, are trademarks of Advanced Micro Devices, Inc. Microsoft and Windows are registered trademarks of Microsoft Corporation in the United States and/or other countries. 3DMark is a registered trademark of Futuremark Corporation. Other names are for informational purposes only and may be trademarks of their respective owners. Other company, product and service names may be trademarks or service marks of others. Visit [www.lenovo.com/lenovo/us/en/safecomp/](http://www.lenovo.com/lenovo/us/en/safecomp/) periodically for the latest information on safe and effective computing.



©2021 Lenovo. All rights reserved.

Lenovo