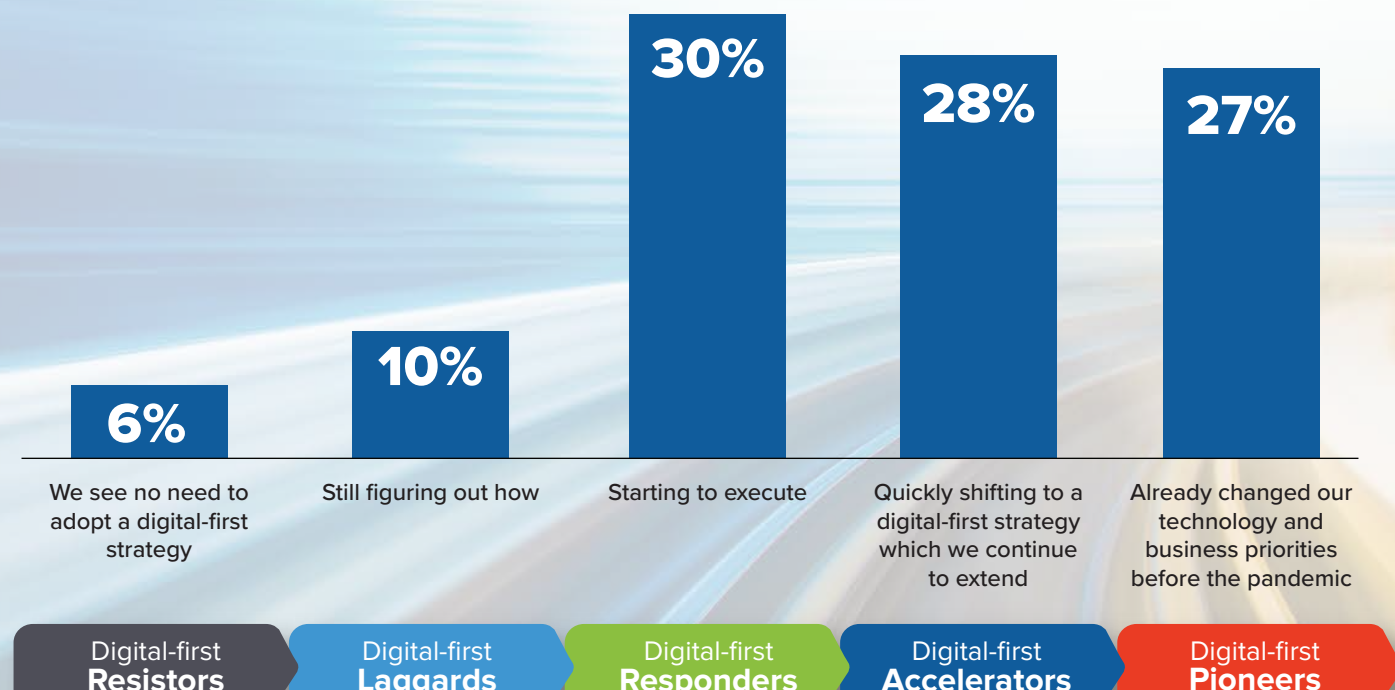


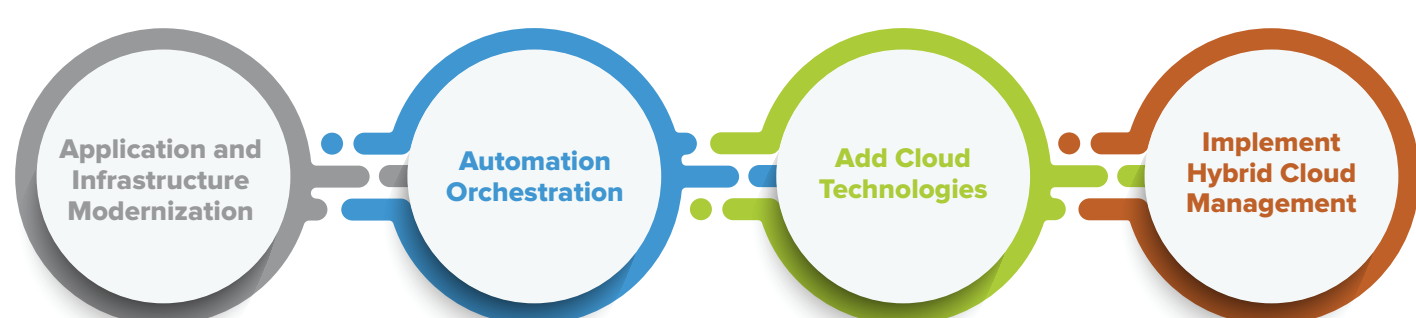


Why HCI Is Important in Hybrid Multi Cloud Environments

Where Are CEOs On Their Digital-first Journey?



Most Enterprises Will Go Through Four Stages on Their Digital-first Journey...



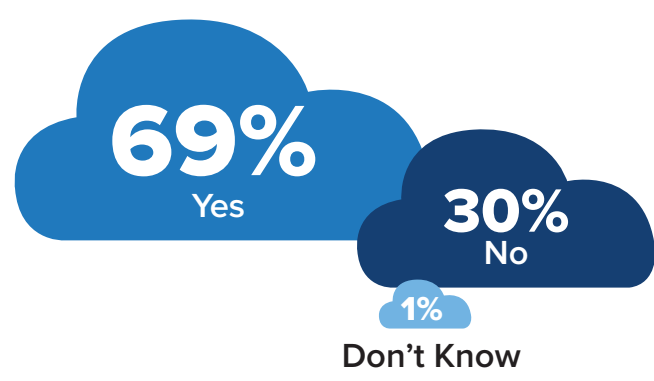
...and Ultimately End Up with Three Deployment Models:



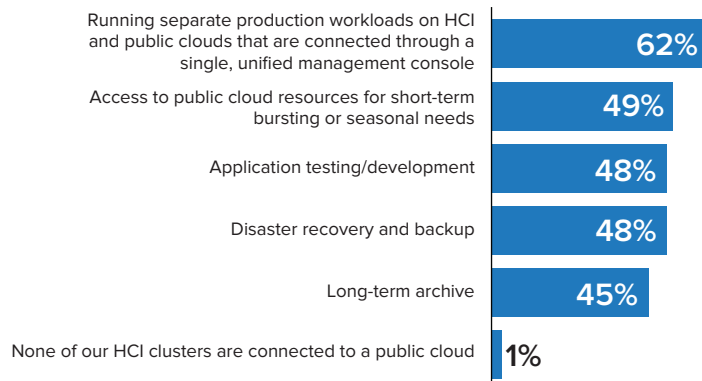
Most new applications will be cloud-native in design while CIOs will determine the disposition of legacy workloads from six options: retain, rehost, refactor, rearchitect, replace, retire.

HCI Is a Popular Choice for Digitally Transforming Organizations

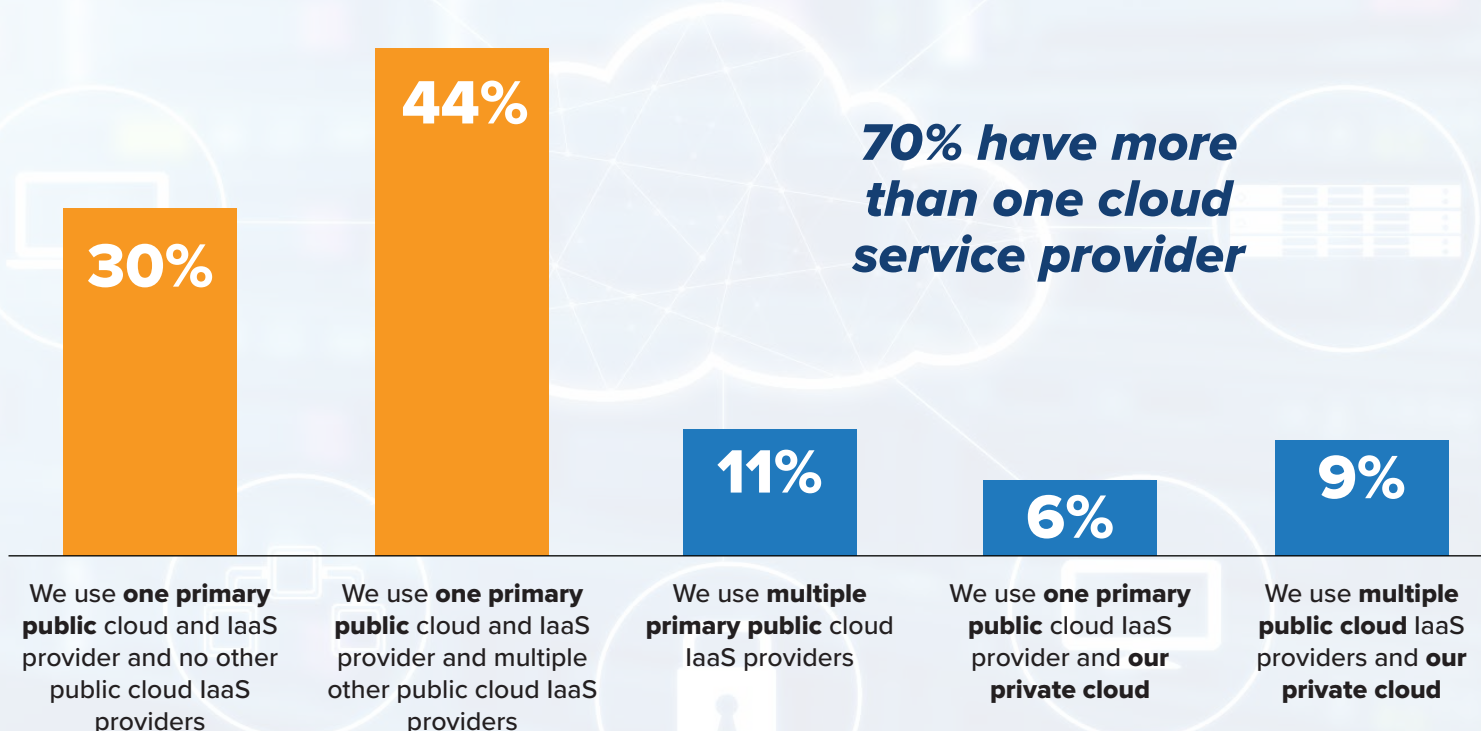
Q: Is the ability to have the same underlying infrastructure (i.e., HCI) in all deployment models an important consideration in deploying hybrid cloud?



Q: What are the top reasons your organization connects HCI clusters to the public cloud?



Most IT Organizations Using Cloud Technology Rely On Multiple Cloud Providers



Top Challenges in Working in Hybrid Multicloud Environments



Message from the Sponsor

Provide the agile and scalable platform your organization needs to support modern application development and roll out cloud services. Lenovo & VMware experts can help you create the right HCI strategy and accelerate your cloud transformation, improving IT responsiveness and lower operational costs.

[Get Started](#)

Sources: From DX to Digital First Equals Sustainable Digital Business: The CEO Imperative in the Digital-First World (#DR2022_GS4_PC_SN) IaaSView 2021: Survey Findings (IDC #US48593721, December 2021) IDC HCI Survey, January 2022 IT Infrastructure for Storage and Data Management Survey, September 2021