



Lenovo High Performance File System Solution with WEKA Data Platform

Solution Brief

Accelerate High-Performance and Technical Compute Workloads

Big data has created new opportunities for innovation but also unforeseen problems for data-intensive applications, particularly in artificial intelligence (AI), machine learning (ML), deep learning (DL), financial analytics, genomics, life sciences, and high-performance computing (HPC). These compute and data-intensive applications demand maximum performance even while their datasets scale to extreme capacities. Legacy storage and data management solutions were designed to solve yesterday's problems and cannot take on the storage challenges that organizations running leading-edge applications are facing now or will in the future. These demanding new workloads can place significant stress on legacy solutions, which were not originally designed to handle these new challenges.

The Lenovo High Performance File System Storage Solution with the WEKA® Data Platform, built on Lenovo ThinkSystem SR630 V2, SR635, SR650 V2, and SR655 servers, is a modern data infrastructure solution that is uniquely built to solve big problems that previously had no solution. It eliminates the complexity and compromises associated with legacy data storage and offers unmatched performance at ANY scale while still providing all the necessary enterprise features and benefits at a fraction of the cost. By meeting the stringent storage demands of key industry workloads, the Lenovo and WEKA solution accelerates the process of obtaining insight from mountains of data and enhances the promise of discovering breakthrough innovation and helping solve humanity's greatest challenges.

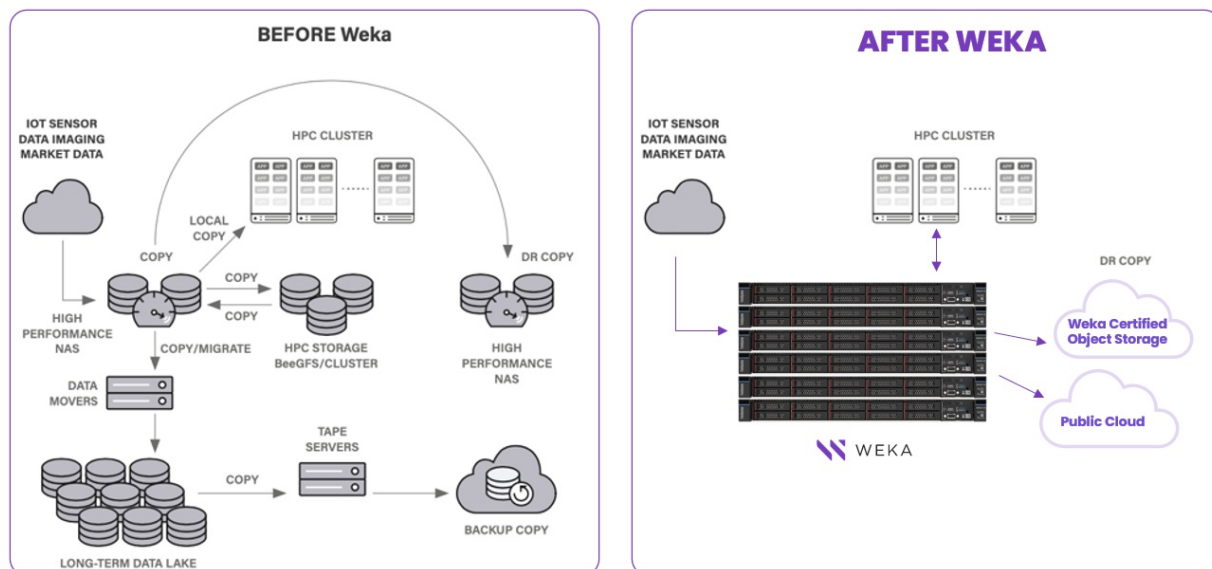


Figure 1. WEKA Unified Data Platform

The workloads that address these challenges require a modern infrastructure with extreme performance in compute, storage, and networking resources. The engineered solution from Lenovo and WEKA addresses these needs and helps you gain the insights needed to gain a competitive advantage, deliver customer value, and grow your business.

The Lenovo ThinkSystem server platforms and the WEKA Data Platform work together to maximize acceleration, reduce training times, and deliver unmatched performance and reliability at scale. This solution is ideal for all of today's data-intensive applications. This storage solution has proven scalable performance, delivering over 10x more performance than all-flash scale-out NAS and 3x more than locally attached NVMe SSDs. Together, Lenovo and WEKA support high-performance workloads in AI, finance, genomics, and technical computing. Because these workloads consist of billions of files, small and large, the storage system must deliver high throughput, low latency, and excellent metadata performance at extreme scale to keep these high-performance applications saturated with data. This is unattainable by legacy storage systems, but it is made possible with WEKA's modern NVMe-optimized, distributed, and parallel file system running on reliable and performance optimized Lenovo servers.

This software defined storage solution leverages WEKA software to support a hybrid cloud model, allowing enterprises to leverage on-demand public compute resources for cloud-bursting, remote backup, and disaster recovery.

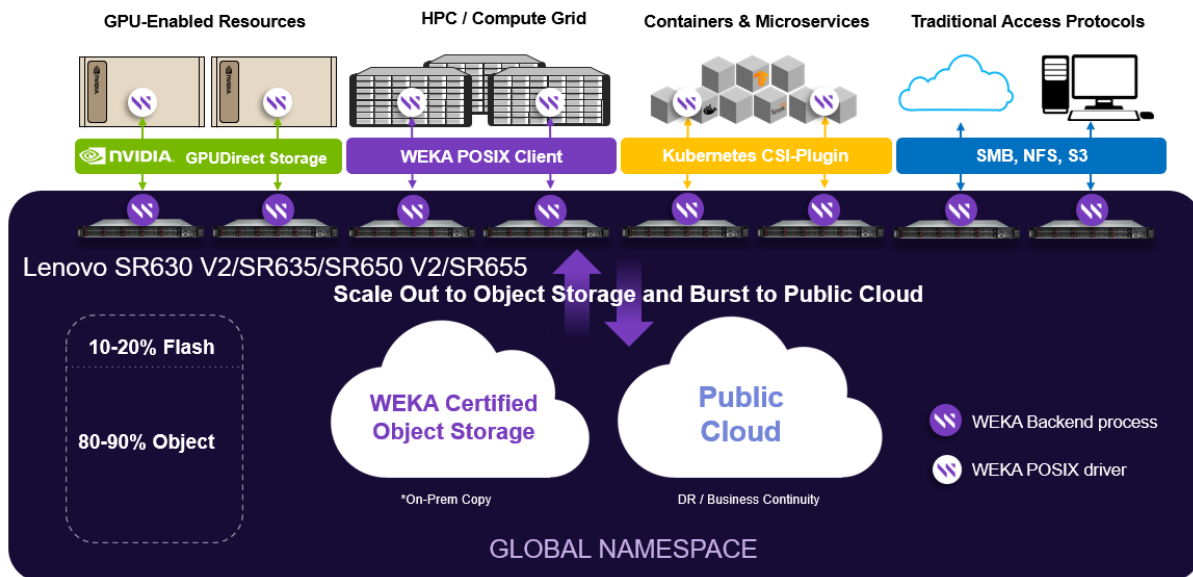


Figure 2. WEKA Data Platform for AI/ML and HPC

Choose A Solution That Delivers Performance, Flexibility, And Value

With Lenovo ThinkSystem servers and WEKA Data Platform software, you can take advantage of a plug-and-play solution that helps extract greater value from data. The solution allows you to start small and flexibly scale to meet your performance and capacity requirements.

The Lenovo ThinkSystem servers offer uncompromising performance, scalability, reliability, and density in your choice of a 1U or 2U form factors. At the core of the WEKA Data Platform is WekaFS, a POSIX-compliant file system that distributes both data and metadata evenly across the entire storage cluster to ensure massively parallel access. This enables the WEKA platform to reduce time to innovation by delivering more data to the applications that need it, faster than any other available solution. With a single namespace that offers on-premises storage and cloud connectivity, the software delivers simplified storage management and data protection. ThinkSystem adapters provide Ethernet and InfiniBand connectivity to deliver up to 200 Gb/sec bandwidth in a single network port, the lowest available latency, and application hardware offloads, satisfying even the most demanding application requirements.

Derive Benefits For Your Business

This high-performance storage solution not only addresses your specific needs based on workload types and performance and capacity requirements, but goes beyond that to provide greater overall benefits for your business:

- Optimization of your IT environments with a modern storage infrastructure and simplified storage management
- Datacenter agility with faster data access and effective resource utilization
- Data transformation for AI, analytics, and technical computing with faster time to value and insight

Lenovo recommends the following minimum entry-level building block for your initial storage deployment, giving you the ability to scale out to greater capacities and performance levels by adding more servers.

6x Lenovo ThinkSystem SR630 V2 or SR635 servers, each configured with the following:

- 256GB or 512GB of memory
- 2x Mellanox ConnectX-6 network adapters
- 4-10x PCIe 4.0 NVMe SSD drives

Lenovo and WEKA deliver a differentiated solution that goes beyond the current market and performance standards for storage and deliver the best solutions for your IT and business challenges.

Minimum Recommended Configuration

The following table lists the minimum recommended configuration for the Lenovo Storage Solution with the Weka Data Platform.

Table 1. Minimum Recommended Configuration

Specification	Recommendation
Server	Lenovo ThinkSystem SR630 V2 (Intel) or Lenovo ThinkSystem SR635 (AMD)
Number of Servers	6
Drives/Server	10
SSD Capacity/Drive	3.84 TB
Usable Capacity (Note 1)	115 TB
CPU	2x Intel Xeon Gold 6326 16C or 1x AMD EPYC 7543P 32C
Networking	High-speed Ethernet or InfiniBand
Software	WEKA
Data Protection	Distributed Data Protection (N+2 or N+4) (Note 2) Drive Virtual Hot Sparing Error Detection: End-to-End Data Protection In-Flight and At-Rest Data Encryption
Protocols	POSIX, NFS, SMB, S3, NVIDIA GPUDirect, and Kubernetes CSI Plugin
Snapshots and Clones	File System Level, up to 24K Snapshots (14K Writable)
Tiering	S3 Compatible Cloud Object Store (Public or Private)
Storage Monitoring	Cloud-based Monitoring and Analytics for Application Tuning and Remote Support
System Management	ThinkSystem XClarity Controller Enterprise
Dimensions per Server	1 Rack Unit, Max Depth: 715 mm
Support Team	Software: 3-Year, Including Same Day Support Hardware: 3-Year, Next Business Day Support
Estimated Performance (Note 3)	Up to 180 GB/sec of Read Throughput up to 14 Million Read IOPS

Notes:

1. 4+2 stripe size with one configured hot spare. Configurations may vary based upon tiering customer network configuration. Please speak with your Lenovo representative for solution guidance appropriate to your environment.
2. N+4 is available only for a cluster with 14 or more servers
3. Performance estimates are for a 6-server cluster on a 200Gb network

Configuration details are subject to change without notice. Additional capacity, drive, and server configurations are available. Please call your Lenovo representative for more information.

For more information

To learn more about Lenovo Data Management solutions, please visit our [Data Management solutions](#) web page. More details on the WEKA Data Platform software can be found at [weka.io](#). You can also contact your Lenovo sales representative or authorized channel partner.

Related product families

Product families related to this document are the following:

- [ThinkSystem SR630 V2 Server](#)
- [ThinkSystem SR635 Server](#)

Notices

Lenovo may not offer the products, services, or features discussed in this document in all countries. Consult your local Lenovo representative for information on the products and services currently available in your area. Any reference to a Lenovo product, program, or service is not intended to state or imply that only that Lenovo product, program, or service may be used. Any functionally equivalent product, program, or service that does not infringe any Lenovo intellectual property right may be used instead. However, it is the user's responsibility to evaluate and verify the operation of any other product, program, or service. Lenovo may have patents or pending patent applications covering subject matter described in this document. The furnishing of this document does not give you any license to these patents. You can send license inquiries, in writing, to:

Lenovo (United States), Inc.
8001 Development Drive
Morrisville, NC 27560
U.S.A.
Attention: Lenovo Director of Licensing

LENOVO PROVIDES THIS PUBLICATION "AS IS" WITHOUT WARRANTY OF ANY KIND, EITHER EXPRESS OR IMPLIED, INCLUDING, BUT NOT LIMITED TO, THE IMPLIED WARRANTIES OF NON-INFRINGEMENT, MERCHANTABILITY OR FITNESS FOR A PARTICULAR PURPOSE. Some jurisdictions do not allow disclaimer of express or implied warranties in certain transactions, therefore, this statement may not apply to you.

This information could include technical inaccuracies or typographical errors. Changes are periodically made to the information herein; these changes will be incorporated in new editions of the publication. Lenovo may make improvements and/or changes in the product(s) and/or the program(s) described in this publication at any time without notice.

The products described in this document are not intended for use in implantation or other life support applications where malfunction may result in injury or death to persons. The information contained in this document does not affect or change Lenovo product specifications or warranties. Nothing in this document shall operate as an express or implied license or indemnity under the intellectual property rights of Lenovo or third parties. All information contained in this document was obtained in specific environments and is presented as an illustration. The result obtained in other operating environments may vary. Lenovo may use or distribute any of the information you supply in any way it believes appropriate without incurring any obligation to you.

Any references in this publication to non-Lenovo Web sites are provided for convenience only and do not in any manner serve as an endorsement of those Web sites. The materials at those Web sites are not part of the materials for this Lenovo product, and use of those Web sites is at your own risk. Any performance data contained herein was determined in a controlled environment. Therefore, the result obtained in other operating environments may vary significantly. Some measurements may have been made on development-level systems and there is no guarantee that these measurements will be the same on generally available systems. Furthermore, some measurements may have been estimated through extrapolation. Actual results may vary. Users of this document should verify the applicable data for their specific environment.

© Copyright Lenovo 2023. All rights reserved.

This document, LP1691, was created or updated on February 7, 2023.

Send us your comments in one of the following ways:

- Use the online Contact us review form found at:
<https://lenovopress.lenovo.com/LP1691>
- Send your comments in an e-mail to:
comments@lenovopress.com

This document is available online at <https://lenovopress.lenovo.com/LP1691>.

Trademarks

Lenovo and the Lenovo logo are trademarks or registered trademarks of Lenovo in the United States, other countries, or both. A current list of Lenovo trademarks is available on the Web at <https://www.lenovo.com/us/en/legal/copytrade/>.

The following terms are trademarks of Lenovo in the United States, other countries, or both:

Lenovo®

ThinkSystem®

XClarity®

The following terms are trademarks of other companies:

Intel® and Xeon® are trademarks of Intel Corporation or its subsidiaries.

Other company, product, or service names may be trademarks or service marks of others.