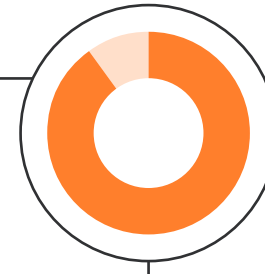
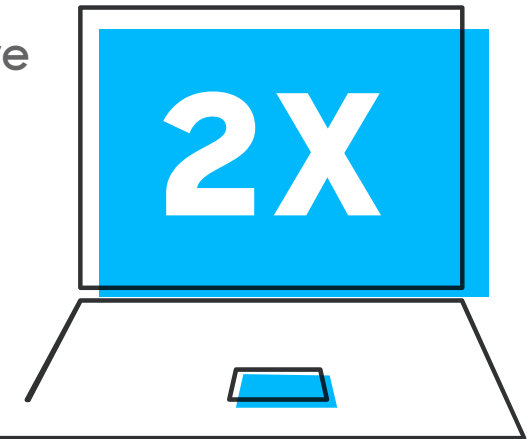


As COVID-19 has led **90 PERCENT** of companies to adopt a WFH policy,

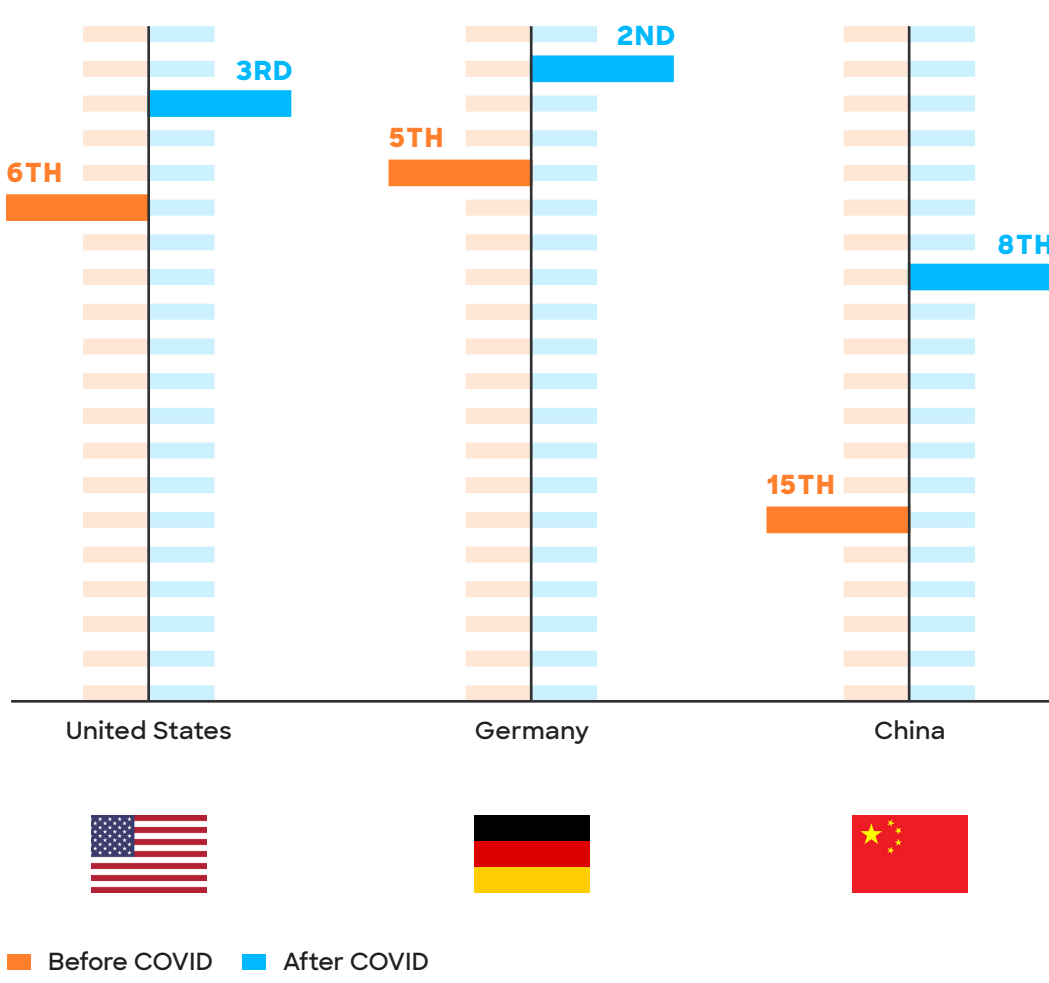


at least **50%** of employees will continue to work from home **AT LEAST TWO DAYS** a week¹.

So, IT Decision Makers are now **TWICE AS LIKELY** to issue laptops versus desktop computers¹.



With the hybrid work model comes increased security concern among ITDMs as indicated by an increase in importance of “secure wireless” in their computer peripheral evaluation criteria¹.



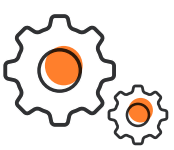
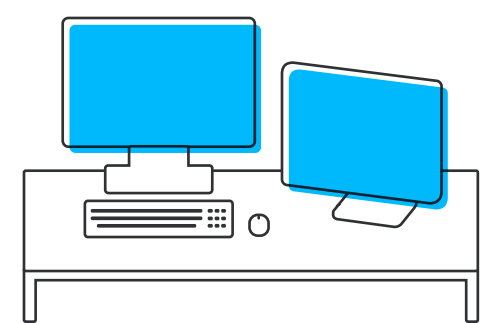
Further, ITDM interest in remote management of computer peripherals as an evaluation criteria rose in rank, notably in markets like China where work-from-home was uncommon prior to COVID-19¹.

	Office	Before COVID-19 RANKED 12TH After COVID-19 RANKED 11TH
	Home	Before COVID-19 RANKED 12TH After COVID-19 RANKED 12TH
	Office	Before COVID-19 RANKED 15TH After COVID-19 RANKED 13TH
	Home	Before COVID-19 RANKED 9TH After COVID-19 RANKED 7TH
	Office	Before COVID-19 RANKED 18TH After COVID-19 RANKED 4TH
	Home	Before COVID-19 RANKED 19TH After COVID-19 RANKED 6TH

1 OUT OF 3 PEOPLE feel like they need to sort out a better work space in order to work more comfortably².

38 PERCENT say their barriers to create a more ergonomic working environment at home are **EXPENSE** or a need for their company to provide **THE RIGHT TOOLS**².

External mice and keyboards are standard issue for work setups in only **40-50%** of organizations¹.



This is important because people are

50 PERCENT MORE PRODUCTIVE & 30 PERCENT FASTER with a **mouse** compared to a touchpad³.



Introducing Logi Bolt, Logitech's next generation wireless device connectivity protocol for people who create and produce in a world of congested wireless environments, evolving compatibility requirements and increasing security expectations.

FULL ENCRYPTION AND SECURE CONNECTIONS ONLY

Logi Bolt combines *Bluetooth*® Low Energy wireless technology Security Mode 1, Security Level 4 - sometimes called Federal Information Processing Standards (FIPS) Mode 4 - with additional Logitech security features designed to reduce vulnerability when devices are paired to a Logi Bolt USB receiver.



NEXT-LEVEL COMPATIBILITY

Logi Bolt wireless devices work with just about every operating system and platform including - but not limited to - Windows®, macOS®, Linux®, Chrome OS™, Android™, iOS® and iPadOS®. In fact, Logi Bolt devices are more universally compatible than most leading peripheral brands on the market.



Logi Bolt connectivity delivers secure and strong wireless connections.

CUTS THROUGH CONGESTION

Logi Bolt is engineered for reliable connections, even in wireless environments congested with interference from Wi-Fi access points or surrounding wireless devices. The Logi Bolt USB receiver provides a robust, drop-off-free connection up to 10 meters (33 feet)⁷ - with up to 8x lower latency⁸ than other commonly deployed wireless protocols for enterprises.

Learn more about Logi Bolt wireless technology at logitech.com/logibolt

¹ Logitech proprietary research, in-field Jul-2020 in China, Germany, U.S. among enterprise IT decision makers, n=804.
² Logitech proprietary research, in-field Nov-2020 in U.S. among people who work from home, n=500.
³ Logitech Ergonomic Lab scientific study on 23 participants in Oct-2019 with four Logitech standard mice and two standard, embedded trackpads measured as throughput computation in bits/second combining speed and accuracy averaged for all devices participating in the study.
⁴ U.S. Federal Information Processing Standard 140-2 (FIPS) is a cryptography standard recognized by Canadian and European Union governments.
⁵ The device's basic functions will be supported without additional drivers in Chrome OS and most popular Linux distributions.
⁶ Support is for Logi Bolt wireless keyboards only.
⁷ Wireless range may vary depending on operating environment and computer setup.
⁸ Test conducted by Logitech in controlled conditions comparing, all else the same, Logi Bolt USB receiver connection latency to competing wireless protocols. The test simulated conditions from no/low noise to very high noise defined as three (3) Wi-Fi access points set at 1000 mW each distanced at 2 meters from the test subject with additional adjacent wireless devices set at 8 mW each: two (2) active Bluetooth devices and three (3) active Logi Bolt product users distanced at 0.5 meters.

© 2021 Logitech. Logitech, Logi, Logi Bolt logo are trademarks or registered trademarks of Logitech Europe S.A. and/or its affiliates in the U.S. and other countries.

The *Bluetooth*® word mark and logos are registered trademarks owned by Bluetooth SIG, Inc. and any use of such marks by Logitech is under license.

All other trademarks are the property of their respective owners.

Logitech
7600 Gateway Blvd.
Newark, CA 94560-9998, USA
NASDAQ: LOGI

