

ELEVATE THE WORKSPACE EXPERIENCE AND REACH YOUR FULL POTENTIAL

The demand for devices that drive productivity has never been greater.

55%

of companies allow remote working, 16% are fully remote¹

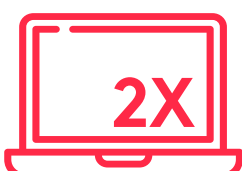
13.5%

more virtual meetings attended on average per employee²

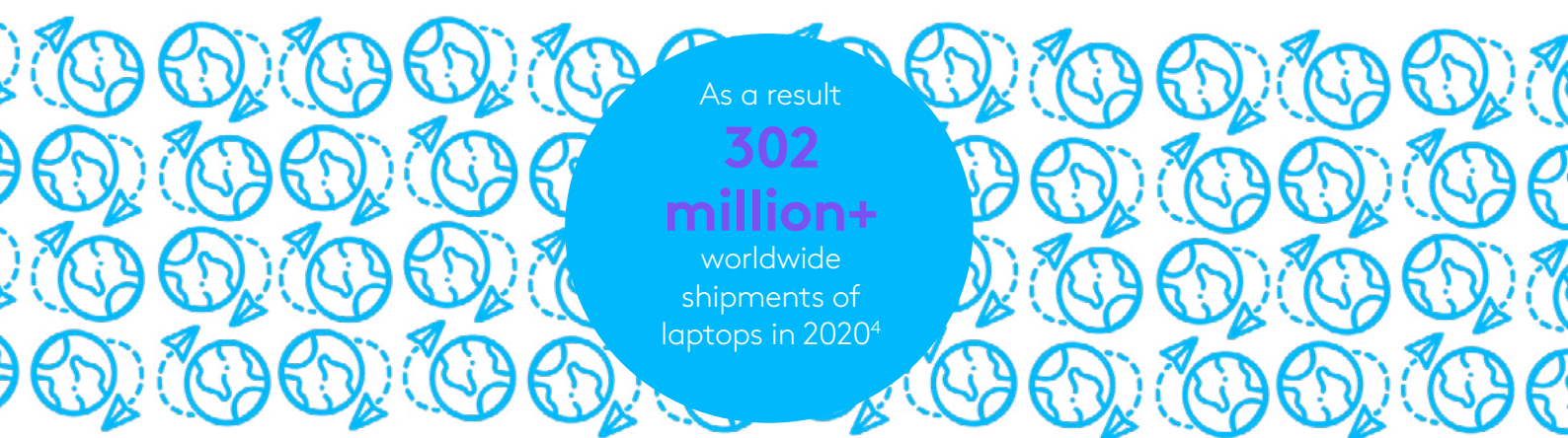
\$2.86BN

computer accessories growth predicted worldwide by 2024³

Due to business continuity needs, IT Decision Makers are now nearly



more likely to issue laptops vs desktops as standard equipment



With these modern workforce trends comes the need for better workspace solutions that offer a **comfortable** experience, while driving user **productivity** and **performance** – no matter how or where employees work.



The average length of time employees work from home has increased by

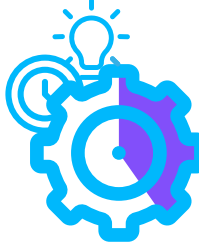
2+ hours a day

since the start of the pandemic⁵



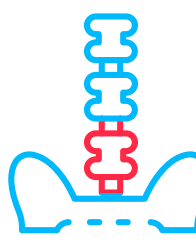
75%

global organizations projected to increase use of productivity tools⁶



40%

employees lose productivity from inefficient multi-tasking⁶



37.7%

musculoskeletal disorder (MSD) cases connected to work in 2020 **VS** just **1.4%** in 2019⁷

Choosing the right device is essential - along with the ability to **add features as demands grow**. Logitech offers a range of devices that introduces features and functionality designed to elevate user comfort, productivity, and performance.



When choosing devices, consider the **top five key factors** that align to user needs and will empower them to perform at their best. Explore functionality that increases with device specifications. Users can choose the right level of features to suit their needs and elevate their experience.

Design



Logitech has won over **250 design awards** from major design organizations and publications globally

- Intuitively placed front/back and gesture buttons
- Sculpted shape and palm support
- Comfortable ambidextrous design

Connectivity



Easy-Switch pairing enables **up to three devices** to be connected on certain keyboards and mice⁸

- Wireless freedom up to 10 meters¹²
- Multi-Device Bluetooth® connectivity
- Plug-and-play simplicity

Efficiency



Users can complete tasks **30% faster** and be **50% more productive** with a mouse vs a trackpad⁹

- Predefined app-specific customizations
- Fluid and ultra-precise typing
- Accurate, line-by-line scrolling

Durability



Some Logitech keyboards are resistant to a maximum of **60 ml liquid spillage**¹⁰

- Up to 36 months battery life
- Integrated rubber cradle
- Spill-resistant design

Response



MX Master 3 scrolls up to **90% faster** and is 87% more precise¹¹

- Scrolling 1,000 lines a second
- Fluid and ultra-precise typing
- Precision tracking

● Performance ● Productivity ● Comfort

Help users reach their full potential with Logitech, no matter how different each person's work mode is. For further information visit: [Logitech.com/business](https://www.logitech.com/business)

1. Live Webinar
2. Otter.ai
3. Business Wire
4. IDC
5. The Guardian
6. Finance Online
7. Personnel Today

8. Wireless range and battery length may vary based on user, environmental and computing conditions
9. Compared to a Logitech MX Master 2s mouse with Logitech Options installed and Smooth Scrolling enabled. Compared to a regular Logitech mouse without an electromagnetic wheel
10. Based on throughput computation in bits/second combining speed and accuracy averaged for all devices participating in the study. Logitech Ergonomic Lab study on 23 participants in (Oct/2019) with four Logitech standard mice and two standard, embedded trackpads
11. Tested under limited conditions (maximum of 60 ml liquid spillage). Do not immerse the keyboard in liquid.
12. Requires Logitech Options software, available for macOS and Windows.
13. Tested under limited conditions (maximum of 60 ml liquid spillage). Do not immerse the keyboard in liquid.