

# Transitioning from Windows 10: A Strategic Guide

Move forward with built-in security, AI, productivity, and business-ready performance. That's the power of Windows 11 Pro PCs with Intel vPro®.



# Table of Contents

- 01 [Why now: end of support for Windows 10](#)
- 02 [How to plan your upgrade](#)
- 03 [Protect against evolving threats](#)
- 04 [Easier, cost-effective, and AI-ready IT](#)
- 05 [Supercharge insights and efficiency](#)
- 06 [Meet Copilot+ PCs featuring Intel vPro®](#)
- 07 [Now's the time](#)

Find potential savings with the Forrester Windows 10 End of Support Calculator

Evaluate the benefits and costs of upgrading all devices to Windows 11 before the EOS date, October 14, 2025.

[EOS Calculator →](#)



01.

# Why now

## End of support for Windows 10

On October 14, 2025, Microsoft will end support for Windows 10. For IT leaders, this is a critical inflection point. As support for Windows 10 ends, Windows 11 Pro devices with Intel vPro® offer the performance, security, and manageability your organization needs.

Devices still running Windows 10 won't receive future Windows feature and security updates. And while some older PCs may be eligible to upgrade, many don't meet the minimum hardware requirements for Windows 11.

New Windows PCs deliver modern security and AI capabilities. The latest Windows 11 Pro PCs and Copilot+ PCs with Intel vPro® close crucial security gaps and unlock productivity, simplify IT, and help future-proof your organization.

[Click Link here →](#)

70%

reduction in attack surface with Intel vPro® compared to 4-year-old devices<sup>1</sup>

50%

Windows 11 Pro PCs offer 50% faster workflows on average compared to Windows 10 devices<sup>2</sup>

65%

less time to manage devices with Intel vPro® vs. devices without vPro®<sup>3</sup>

400<sup>+</sup>

AI features optimized on Intel Windows PCs

02.

# How to plan your upgrade

Many organizations are still using Windows 10 not because they don't see the value of modern devices—but because they're concerned about rollout challenges, downtime, cost, and compatibility.

The reality? Upgrading is easier than you think.

Windows 11 Pro PCs with the most efficient x86 processor by Intel deliver accelerated workflows, while reducing support time and costs through automated deployment and management.

## Check before you upgrade

Examine your organization's readiness to migrate to Windows 11 Pro with this [Assessment Tool](#) →

## Need help getting started?

Microsoft offers planning tools and migration guides to help you upgrade with confidence. [Windows 11 Deployment Planning](#) →

# 99.7%

Windows 10 app compatibility<sup>4</sup>

# 4<sup>x</sup>

Windows 10 PCs need to be repaired 4x times more often than newer ones<sup>5</sup>

# 65%

less time to manage devices with Intel vPro® vs. devices without vPro®<sup>3</sup>

# 64%

reduction in overall IT maintenance costs for users migrated to Windows 11 devices<sup>6</sup>

- Microsoft Intune\* and Windows Autopilot\*\* streamline deployment across your fleet
- Windows Update for Business to reduce the burden of manual updates
- Ability to create custom AI solutions for unique business needs, with tools like Microsoft Copilot Studio\*

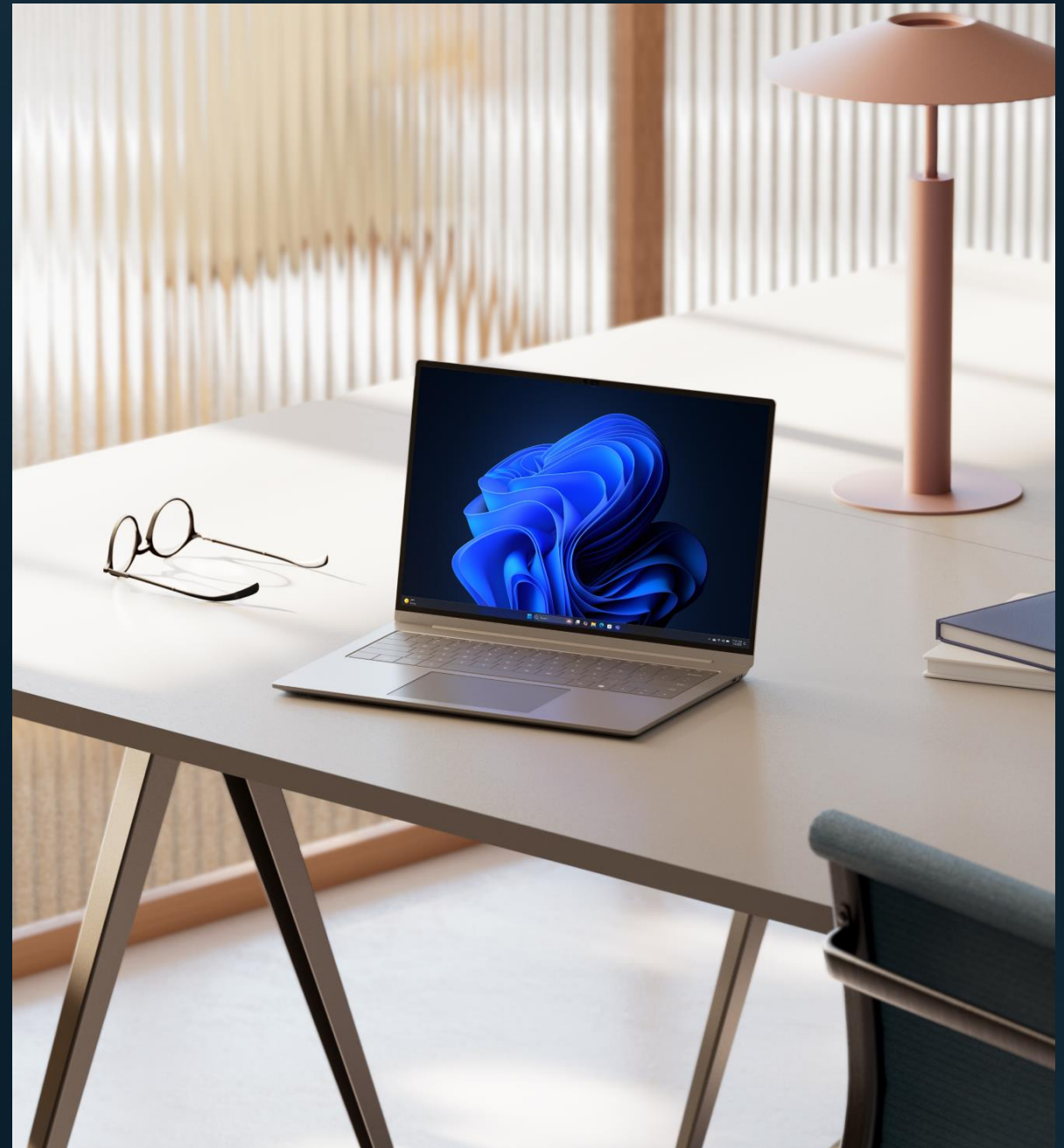


# Industry-leading AI. Powered by Intel. Built for business.

Many organizations today are prioritizing AI-powered productivity to sharpen skills, streamline workflows, and stay competitive. Now, you can unlock those benefits on a secure, familiar Windows platform—powered by [Intel® Core™ Ultra processors](#) with [Intel vPro®](#) and built for the way your teams work.

With modern [Windows 11 Pro PCs](#), your organization gains AI-enhanced efficiency, powerful performance, and hardware-backed security—ready to meet today's demands and tomorrow's challenges. For organizations seeking the most advanced AI capabilities, [Copilot+ PCs](#) take it even further with powerful performance and exclusive AI experiences.<sup>7</sup>

This guide explores three ways new, AI-ready devices with [Intel vPro®](#) can elevate employee potential and help your business move faster, smarter, and more securely.



03.

# Protect against evolving threats

Deploy with confidence—[Windows 11 Pro PCs](#) with [Intel vPro®](#) are secure by default, delivering built-in, multilayer protection that contributes to a 62% drop in reported security incidents.<sup>5</sup>

In Windows 11, hardware and software work together to shrink the attack surface, protect system integrity, and shield valuable data. For example, Windows Hello for Business works with hardware-based features like Trusted Platform Module (TPM) 2.0, biometric scanners, and Windows presence sensing to enable easier, secure sign-on and protection of your data and credentials.

With the power of [Windows 11 Pro PCs](#) and [Intel vPro®](#), your business gets powerful protection without slowing growth. With [Intel Threat Detection](#) technology, you can spot attacks earlier. Scanning is offloaded to the GPU, so performance stays smooth and responsive.

Together, [Intel vPro®](#) and [Windows 11 Pro](#) offer chip-to-cloud protection—from trusted boot and device and data encryption, to identity protection, apps security, and device health attestation. When paired with Microsoft 365\* and Microsoft Intune\*, organizations can manage and protect endpoints at scale.

Because these protections are built-in and always on, IT teams spend less time reacting and more time moving the business forward.



# 62%

drop in reported  
security incidents<sup>5</sup>



# 70%

reduction in attack surface  
compared to 4-year-old  
devices with Intel vPro®<sup>1</sup>



# Granular control across endpoints and AI

Set and enforce security policies with ease across your endpoints, including apps, PCs, and AI tools. Windows 11 Pro devices with Intel vPro® offer hardware-level protection that works with management tools like Microsoft Intune\* to help reduce risk across your environment—backed by a 70% reduction in attack surface compared to older devices.<sup>1</sup>

## Highlighted features:

- Bolster application security with App Control for Business
- Securely support employees with Intune Endpoint Privilege Management
- Built-in hardware security anchored by Intel silicon-level protections



## Shield identities anywhere

Protect sensitive credentials with the latest identity safeguards, including biometric sign-in via Windows Hello for Business and firmware-level protections from Intel. Built-in features like passkey protection<sup>8</sup> work alongside Intel vPro<sup>®</sup> security to help protect against credential theft, phishing, and intrusion.

Windows 11 Pro PCs help your teams stay secure and mobile—with hardware-backed authentication and always-on encryption across every layer, from BIOS to OS to cloud. And with a reported 2.9x fewer instances of identity theft<sup>5</sup>, your employees can log in and work from anywhere, without compromise.

### Highlighted features:

- Enhanced phishing protection with early threat detection
- Lock it and leave it: keep your data safe from intrusions
- Windows Hello for Business enables biometric passwordless sign-in
- With security features in Windows 11 enabled by default, Secured-core PCs deliver layers of protection, for the highest level of Windows security including advanced firmware protection

## Safeguard data & privacy

Cyberthreats are evolving, and so should your defense. Windows 11 Pro PCs with Intel vPro<sup>®</sup> offer hardware-backed safeguards that protect sensitive business and personal data. Teams benefit from secure device attestation and enhanced privacy settings.

Advanced security means peace of mind, backed by firmware-to-cloud protections built directly into the device by default.

### Highlighted features:

- Device attestation with Microsoft Intune\* and Intel vPro<sup>®</sup>
- Integrated hardware-based security with Intel
- Enhanced privacy settings to meet evolving compliance needs







04.

## Easier, cost-effective, and AI-ready IT

Windows 11 Pro PCs are built for fast, cost-effective deployment—helping IT teams roll out modern devices with minimal disruption. Tools like Windows Autopilot\*\* and Microsoft Intune\* simplify setup, while broad app compatibility eases the transition. With [Intel® Core™ Ultra processors](#) and the [Intel vPro®](#) platform, these devices deliver scalable performance and streamlined manageability to keep your organization ready for what's next.



# 25%

faster deployments  
reported by organizations.<sup>6</sup>



# 30%

less time to deploy devices  
with Intel vPro® vs. devices  
without Intel vPro®.<sup>3</sup>

## Scale IT from edge to cloud

With new Windows 11 Pro PCs, your organization can grow from local to global, strengthen security, and unlock new potential—without slowing down. Windows 11 Pro works seamlessly with Microsoft Entra ID\*, Microsoft Intune\*, and Windows Autopilot\*\* to enable automated device enrollment, policy enforcement, and streamlined cloud management.

Combined with Intel vPro® platform capabilities, organizations can simplify deployment and reduce complexity with studies showing up to 30% faster rollout using Intel vPro® devices with Windows Autopilot\*\*.3

### Highlighted features:

- Optimized for Microsoft 365\* for productivity, management, and advanced security
- Intel vPro® platform support enables fast deployment and fleet-wide manageability
- Microsoft Intune\* for centralized policy enforcement
- Windows Update for Business delivers latest Windows security and feature updates

## Customize AI for unique needs

Innovate and improve efficiency with custom industry-specific AI experiences on Windows 11 Pro PCs.7 For example, with Microsoft Copilot Studio\*, you can easily enhance Microsoft 365 Copilot\* or build your own agents to automate tasks and improve support for your employees and customers.

### Highlighted features:

- Automate workflows with Microsoft Copilot Studio\*
- Leverage responsible AI principles and Microsoft best practices





# Automate updates and deployment with confidence

Simplify setup for IT and accelerate productivity for employees. Windows 11 Pro PCs with Intel vPro® offer built-in security and remote manageability, so zero-touch deployment is seamless. With features like Windows Autopilot\*\* and Windows Update for Business, your team can roll out new devices quickly, and trust that they'll stay protected and up to date.

## Highlighted features:

- Intel vPro® platform enables remote fleet management
- Zero-touch provisioning with Windows Autopilot\*\*
- Built-in client enrollment and policy controls via Microsoft Intune\*
- Ongoing updates with Windows Update for Business



# Work seamlessly across your business ecosystem

Windows 11 Pro is designed to support your full app and device landscape, backed by Intel® hardware compatibility testing for top-tier performance and reliability. With 99.7% of business apps supported<sup>4</sup> out of the box and the App Assure program to help resolve compatibility issues at no cost, adoption is smooth for both users and IT.

## Highlighted features:

- 99.7% app compatibility with Windows 10, backed by the App Assure program<sup>4</sup>
- Intel x86 processors validated for broad device and accessory support

**80%** reported drop in helpdesk calls due to factors like passwordless sign-in and out-of-the-box security.<sup>6</sup>



Devices powered by Intel are validated across 200+ ISVs and 500+ AI models for business-ready compatibility.





05.

# Supercharge insights and efficiency

According to recent findings, employees spend more than 57% of their time in meetings, email, and chat—and just 43% creating.<sup>9</sup> We've reached a tipping point where process has overwhelmed progress.

Windows 11 Pro PCs with Intel vPro® unlock up to 59% faster real-world task completion vs. 3-year-old PCs<sup>2</sup>, offering a productivity edge that helps teams stay sharp, work smarter, and collaborate better—wherever they are.

Built-in AI features help teams move faster and enhance focus—helping employees achieve more in less time, while improving job satisfaction.

Engineered for speed, clarity, and creativity, the power of Windows 11 Pro PCs with Intel vPro® help everyone work to their highest potential.

**50%**

faster workflows on average.<sup>2</sup>

**200+**

ISVs optimized for Windows devices powered by Intel.

## Save time for your best work

A survey showed that about 80% of workers want AI to help summarize meetings, plan their day, and find the right answers faster.<sup>8</sup> Microsoft 365 Copilot\*, optimized on Windows PCs, delivers that clarity—analyzing complex data, generating summaries, and offering quick insights. With enhancements like snap layouts and seamless redocking, Windows 11 Pro PCs help employees complete demanding workloads 42% faster on average.<sup>6</sup>

### Highlighted features:

- Stay in flow with snap layouts, designed for multitasking and focus
- Get intelligent suggestions in File Explorer, the Start menu, and the taskbar
- Use Live Captions to improve accessibility and engagement during meetings<sup>10</sup>

## Stay in the flow anywhere

Since 2020, 68% of employees have reported they don't have enough uninterrupted time.<sup>8</sup> Windows 11 Pro PCs with Intel help restore focus. Whether you're on a team or working solo, it's easy to stay in the flow anywhere with smarter meetings, easy access to files and information, focus tools, and features to get organized in a snap.

### Highlighted features:

- Snap layouts help you stay organized and optimize space
- Seamless redocking saves time by remembering your open windows
- Search with Microsoft Copilot\*; save time and get better results
- Focus tools help you stay on track with personalized sessions to minimize distractions and structure deep work time.





# Experience fast, intuitive discovery

Find what you need, faster. Windows 11 Pro PCs streamline everyday search tasks, helping team members find the right content at the right time. With intelligent suggestions in File Explorer, the Start menu, and the taskbar, you can surface recent files, relevant documents, and key information.

## Highlighted features:

- File Explorer helps you get the files you need quickly and easily
- Windows search across files, apps, and the internet—with built-in responsiveness from Intel hardware



# Elevate every workstyle

Windows 11 Pro PCs with Intel vPro® deliver inclusive, AI-powered experiences designed to support different business needs. Built-in features in Windows 11 Pro help users collaborate more effectively and make a bigger impact with tools like voice access, Live Captions<sup>10</sup>, and accessibility settings that support different workstyles.

## Highlighted features:

- Voice access in Windows 11 lets you control your PC with your voice.<sup>11</sup>
- Live Captions for multiple languages can be enabled when someone is talking in live or recorded audio in any app on your PC.<sup>10</sup>
- Accessibility features like Narrator<sup>12</sup> and Magnifier, built into Windows 11
- Focus tools work with your to-do list, and let you set a timer to work undisturbed by notifications, with breaks built-in and Spotify integrated to enhance your session with music and podcasts.<sup>13</sup>





# Windows 11 Pro vs Windows 10

Take informed action with a detailed comparison of Windows 11 Pro and Windows 10, including a breakdown of new and enhanced features.

[View comparison guide →](#)



Copilot+PC

06.

# Meet Copilot+ PCs featuring Intel vPro®

Some businesses demand cutting-edge AI capabilities to empower knowledge creators and on-the-go professionals. Copilot+ PCs with Intel vPro® give early adopters the performance, protection, and powerful AI experiences they need to achieve.<sup>7</sup>

Copilot+ PCs with Intel vPro® are designed for the AI era: blending speed, security, and intelligence in a sleek, business-ready form. These new devices meet rigorous performance standards, with built-in AI acceleration and the most advanced Windows security, right out of the box.

## What sets them apart:



Fast, built-in AI performance



Powered by a 40+ TOPS NPU for unique AI experiences<sup>7</sup>



Secured-core PC protection by default, with Microsoft Pluton and Windows Hello Enhanced Sign-in Security

Copilot+ PCs with Intel vPro® support secure, high-performance deployment at scale—ready for today's needs and tomorrow's opportunities.



Copilot+PC



# Exclusive Copilot+ PC features

**Recall (preview) with IT controls:**  
Find almost anything that's appeared on your screen—just describe it in your own words.<sup>14</sup>

**Live Captions with translation:**  
Enable from more than 40+ languages into English, and 20+ languages into simplified Chinese.<sup>15</sup>

**Windows Studio Effects:**  
Improve videoconferencing and system performance with AI-enhanced features including automatic framing, natural-looking eye contact, and intelligent noise suppression.<sup>16</sup>

**Click to Do:**  
Analyze text or images on your screen for intelligent suggestions of next steps in your workflow. Recommendations include copy, share, open with another app, search the web, rewrite, blur background with Photo, and more.<sup>17</sup>


**Improved search in Windows:**  
Enjoy faster, more intuitive results powered by enhanced AI that learns your preferences and surfaces the right content when you need it.<sup>18</sup>

Uncover new opportunities, create compelling content, and solve problems faster—anywhere—with unique AI experiences and all-day battery life. <sup>7</sup>

95% predict that Live Captions with translation would make calls more productive<sup>19</sup>

47% faster single-threaded performance vs 4-year-old devices<sup>20</sup>

2.7x more battery life vs 4-year-old systems<sup>20</sup>

 Up to 3.3x better AI performance, 25% faster content creation, and 2.5x stronger 3D graphics, when compared to Intel® Core™ Ultra Series 1.<sup>20</sup>



# Unique architecture

## Built for business with Intel® Core™ Ultra processors and Intel vPro®

Copilot+ PCs deliver secure, personalized, and high-performance productivity on the go—providing more advanced AI capabilities in combined with improved battery life. The result: faster, smarter experiences that can run all day without recharging.

## Built for AI workflows

Copilot+ PCs are powered by a dedicated NPU that accelerates AI functionality to handle modern workloads with speed and efficiency.

- Up to 2× longer battery life vs 3-year-old PCs<sup>20</sup>
- 25% faster performance<sup>20</sup>
- Optimized for tools like Microsoft 365\*, Power BI\*, and Teams\*



Copilot+PC



## The highest levels of security and manageability, by default

Copilot+ PCs help organizations protect, monitor, and manage devices at scale with built-in capabilities from silicon to cloud.

Highlighted features:

- Works with Microsoft Intune\* and Windows Autopilot\*\* to enable secure, zero-touch deployment and policy enforcement
- Real-time telemetry and device health insights support proactive IT management

[See all Intel devices →](#)

## Backed by a broad ecosystem

From seamless deployment to long-term reliability, Copilot+ PCs are built to perform

Highlighted features:

- Validated for Windows 11 with Intel® SIPP platform stability and native support for modern management tools
- 400 Commercial AI features optimized on Intel, with 500+ AI models and 200+ ISVs tested
- Streamlined deployment with Windows Autopilot\*\* and Microsoft Intune\* for cloud-based setup and policy control
- Ongoing updates and support from Windows Update for Business, helping IT keep devices secure and current



The Right Side of Risk

Copilot+ PCs

# The future of business starts now

Windows 10 support ends October 14, 2025. That means no more security updates—and no room for delay. It's time to move to devices that are built for today and ready for what's next.

Windows 11 Pro PCs deliver a secure, high-performance foundation for modern work. For organizations that want to be ready for the next wave of AI innovation, Copilot+ PCs provide the most advanced Windows experience yet.

Upgrading now means more than avoiding disruption—it means building on a modern, secure platform that's ready for what's next.

## Not sure where to start?

Use Microsoft's [planning and deployment resources](#) → to assess your current fleet, explore device options, and make your move before support ends October 14, 2025.



Copilot+PC



07.

# Now's the time

Windows 11 Pro does more than update your system, it helps you move your business forward. When paired with modern devices powered by Intel, it enables your business to:

- Work smarter with AI-infused experiences across your apps and OS
- Protect your organization with built-in, chip-to-cloud security
- Deploy and manage with less effort, fewer disruptions, and more control

EOS is a chance to move ahead—smarter, faster, and more securely than before.



90%

of Fortune 500  
companies are already  
using Windows 11 Pro<sup>21</sup>



89%

of respondents expect  
improved job satisfaction  
and employee retention  
with Copilot+ PCs<sup>19</sup>

# Upgrade with confidence

Modern Windows 11 Pro devices with Intel vPro® are ready for today and tomorrow. Whether you're upgrading to Windows 11 Pro or adopting the best-in-class Copilot+ PCs, Intel and Microsoft offer the tools to make your move quick, easy, and impactful.

## Take the next step

A few helpful link:

[Check your device readiness with Microsoft's assessment tool →](#)

[Find the right device for your users →](#)

[Estimate the business impact of your upgrade →](#)





# Endnotes

- \* Sold separately
- \*\* Microsoft Intune required; sold separately
- <sup>1</sup> Based on IOActive’s “Intel vPro® 13th Gen Attack Surface Study,” March 2023, commissioned by Intel.
- <sup>2</sup> Compared to Windows 10 devices. [Improve your day-to-day experience with Windows 11 Pro laptops](#), Principled Technologies, April 2023.
- <sup>3</sup> Based on a 2021 study by Techaisle, commissioned by Intel, comparing time spent managing Intel vPro® devices vs. non-vPro devices in SMB environments.
- <sup>4</sup> [App Assure program data](#).
- <sup>5</sup> Microsoft commissioned Windows 11 Survey Report. Techaisle, September 2024. Windows 11 results are in comparison with Windows 10 devices.
- <sup>6</sup> Microsoft-commissioned study delivered by Forrester Consulting “The Total Economic Impact™ of Windows 11 Pro Devices”, December 2022. Note, quantified benefits reflect results over three years combined into a single composite organization that generates USD1 billion in annual revenue, has 2,000 employees, refreshes hardware on a four-year cycle, and migrates the entirety of its workforce to Windows 11 devices.
- <sup>7</sup> Copilot+ PC experiences vary by device and region and may require updates continuing to roll out through 2025; timing varies. See [aka.ms/copilotpluspcs](#)
- <sup>8</sup> The passkey can be saved locally to the Windows device and authenticated via Windows Hello or Windows Hello for Business. Hardware dependent
- <sup>9</sup> Work Trend Index Annual Report “[Will AI Fix Work](#)” May 2023.
- <sup>10</sup> Live Captions available in many languages. [Learn more](#).
- <sup>11</sup> Available in Windows 11, version 22H2, and later. [Learn more](#).
- <sup>12</sup> Natural voices available worldwide in English (US, UK, India), Chinese, Spanish, Japanese, French, Portuguese, German, and Korean. Narrator is available worldwide and supported in these languages: [Appendix A: Supported languages and voices \(microsoft.com\)](#).
- <sup>13</sup> Requires Spotify account.
- <sup>14</sup> [Recall \(preview\)](#) is available starting early 2025 in most markets; rolling out to the European Economic Area later in 2025. Optimized for select languages (English, Chinese (Simplified), French, German, Japanese, and Spanish. Content-based and storage limitations apply. [Requires Windows Hello Enhanced Sign-in Security](#). Enterprise license required for some [policy-enabled management controls](#). [Learn more](#).
- <sup>15</sup> Live Captions with translation for video and audio subtitles into English from 40+ languages and from 27 languages into Chinese (Simplified). [Learn more](#).
- <sup>16</sup> Requires built-in camera; available effects vary by device. [Learn more](#).
- <sup>17</sup> Click to Do (preview) is coming later to devices in the European Economic Area. Functionality will vary by device and market; text actions will be available across markets in select character sets. [Learn more](#)
- <sup>18</sup> Improved Windows search is available starting mid-2025. Works with specific text, document and image formats only; optimized for select languages (English, Chinese (Simplified), French, German, Japanese, and Spanish). [Learn more](#).
- <sup>19</sup> Understanding Employee Productivity and Satisfaction Benefits of Next-Generation AI PCs as You Plan Your Next Refresh, IDC in partnership with Microsoft, August 2024.
- <sup>20</sup> Signal65, Welcome to the Copilot+ PC Generation, 2024.
- <sup>21</sup> FY23 Q3 – Press Releases – Investor Relations – Microsoft, based on Monthly Active Device data.