

MULTITECH®

CREATE • CONNECT • COMMUNICATE

MultiTech Conduit®
Gateways



MultiConnect® microCell
USB Cellular Modems



MultiConnect® eCell
Cellular to Ethernet
Bridges

MultiTech Dragonfly™
Embedded Cellular
Modems & SoMs



Industrial Cellular Connectivity Solutions

Communications solutions for the Industrial Internet of Things: Certified, carrier-approved modems, routers, and gateways to enable IoT and M2M applications leveraging your choice of LTE networking technology.



TECHNOLOGY THAT TRANSFORMS

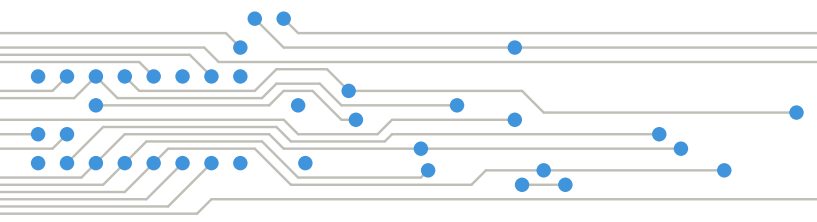
MultiTech is committed to supporting the growth and development of the Industrial Internet of Things in order to create new customer experiences and unparalleled economic value, while improving quality of life for countless people throughout the world. By providing products and services to connect “things” to the Internet, MultiTech delivers deeper understanding to businesses, governments, organizations and individuals, which will in turn transform the way we live and work.

Our products are designed to ensure the quickest route to market based on your needs, programming capabilities, preferred use of resources and business focus, in order to deliver a faster return on investment and lower total cost of ownership.



Introducing Private LTE

Private LTE networks are becoming the alternative to public LTE and Wi-Fi networks. Enterprises are deploying Private LTE networks to guarantee wireless coverage where public networks do not exist or in locations where wireless coverage is critical for organization efficiency. Other use cases require an increased available capacity for applications that generate large amounts of data or have specific uplink or downlink requirements. Still other organizations are interested in exercising greater control over how resources are used and prioritized. These dedicated private networks, neutral host networks, and fixed wireless networks are being considered in a wide variety of industrial applications including factories, warehouses, and power plants as well as public applications like airports, stadiums, and hospitals. MultiTech is among the first to market with FCC approved CBRS devices for private OnGo networks in the U.S. and will support Private LTE as it becomes available around the world.

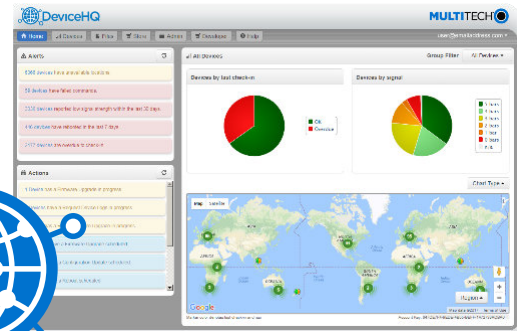


WHY MULTITECH?

DEVICE AND APPLICATION MANAGEMENT

MultiTech DeviceHQ[®] is a cloud-based tool set for managing the latest generation of MultiTech devices. It incorporates all the functionality of MultiTech Device Manager on which so many M2M and IoT applications already rely for remote monitoring,

upgrades and configuration of entire device populations – whether one or 1 million. DeviceHQ takes remote device management and maintenance to a new level, by providing an application marketplace, allowing users to browse applications, or build their own, then easily deploy and customize them for remote devices from anywhere.



MPOWER™ EDGE INTELLIGENCE

mPower™ Edge Intelligence is MultiTech's embedded software offering used on programmable gateways and smart routers and helps deliver programmability, network flexibility, enhanced security and manageability for scalable Industrial Internet of Things (IIoT) solutions.



mPower simplifies integration with a variety of popular upstream IoT platforms to streamline edge-to-cloud data management and analytics, while also providing the programmability and processing capability to execute critical tasks at the edge of the network to reduce latency; control network and cloud services costs, and ensure core functionality – even in instances when network connectivity may not be available. mPower incorporates a host of security features including signed firmware validation, enhanced firewall and VPN settings, secure authentication and more.

50 YEARS OF INNOVATION

From the earliest analog systems, to the cellular heart of today's industrial Internet of Things, to the latest low-power wireless technology and beyond, MultiTech has consistently connected businesses in ways previously unimaginable – and has been doing so for 50 years. We're continuing our legacy of firsts with innovative devices supporting edge intelligence, LPWA, Private LTE and 5G.



SUPPORT

MultiTech customers consistently rate us ahead of the competition for the quality of our technical support. That's because we're committed to providing you the information you need to install and maintain your product in a timely, concise and easy-to-understand format. Our commitment to quality and service excellence means you can count on MultiTech products and people to address your needs, while our history of innovation ensures you can stay ahead of the latest technology with a partner who will be there for the life of your solution.

MODEMS, ROUTERS AND GATEWAYS

Our family of modems, routers and gateways cover a diverse range of use cases. These products offer the quickest time to market, because they're virtually plug-and-play to get your IoT or M2M application communicating immediately. We've done all the design, certification and RF work for you. Simply choose the right product for your application, plug it in and you are connected to the world.

Choose a MultiTech device product when:

- Time to market is critical.
- You don't have the skills, funding or resources to implement your own connectivity.
- Risk reduction is a top priority.
- You need to retrofit existing high-value capital equipment in the field.
- Transition between proof of concept and production requires minimal effort.



MultiConnect® eCell

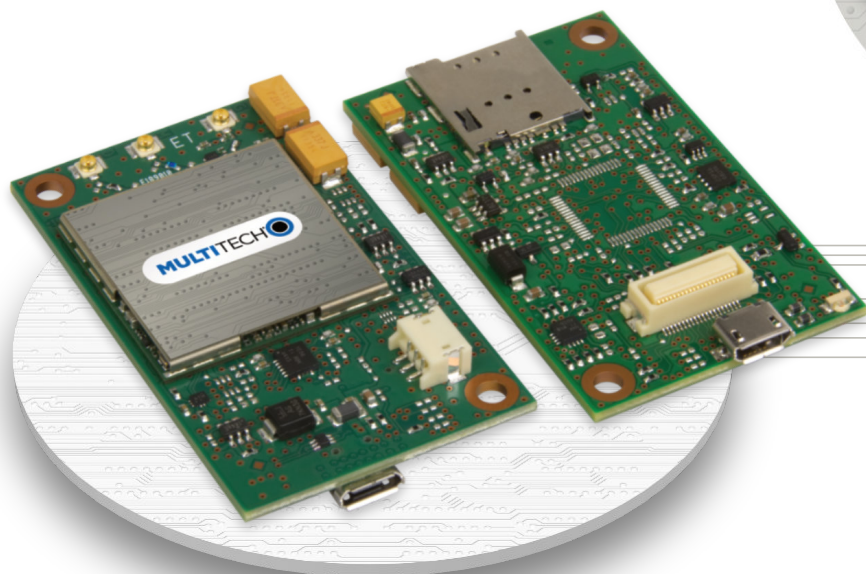
The MultiConnect® eCell cellular to Ethernet bridge makes adding cellular connectivity to existing wired assets quick and easy, providing wireless failover to prevent network outages to vending machines, kiosks, digital signs, ATM machines and countless other fixed assets that require reliable, always-on connectivity. With 4G-LTE Cat 4, there's no need to sacrifice bandwidth when switching between cellular and Ethernet. Plus, the easy set up wizard, bundled antenna, power supply and Ethernet cable make installation a snap. The MultiConnect® eCell Cellular to Ethernet Bridge is now also available for use on OnGo CBRS networks.

EMBEDDED M2M PRODUCTS

Build communication capabilities right in to your products with pre-approved and ready-to-integrate embedded products from MultiTech. Our embedded range of modems and systems on modules (SoM) are designed for those who want more control and flexibility in the development process. You'll need more engineering skills and resources compared to our device products, but you'll benefit from a reduced bill of materials.

Choose MultiTech embedded products when:

- You have the engineering skill to integrate, but prefer to avoid the complications associated with certifications and carrier approvals.
- It's time to reduce your bill of materials.
- Control and flexibility of design are critical.



MultiTech Dragonfly™

The Dragonfly™ embedded cellular modems and SoMs are fully certified and MNO approved, ready-to-integrate modules that offer developers the functionality of a programmable computing platform with the convenience of an onboard cellular radio all in one compact design. From a software perspective, Dragonfly is compatible with the Arm® Mbed™ programming platform allowing for rapid prototyping, development and deployment. With its integrated Cortex®-M4 processor, developers can host their application and have access to a full suite of interfaces for connecting sensors or other remote assets.

As the first Arm Mbed cellular SoM listed on mbed.org that is industry certified and deployment ready, applications can be written and compiled quickly online using developer friendly libraries, downloaded and hosted within the Dragonfly. This powerful suite of hardware and software products greatly reduces your time to market and makes your Internet of Things (IoT) device a reality today.

YOUR SPEED

When you are dealing with mission-critical applications, the availability and reliability of your connections are critical – which is why we offer a range of LTE devices to leverage existing LTE networks worldwide and deliver on time, every time.

However, many IoT and M2M applications simply don't require the bandwidth of LTE Categories 4 and above. In situations when you are only sending a small amount of data, but can't afford latency, the global carrier community is working to deploy low-power, wide area (LPWA) network technologies including LTE Cat-M and NB-IoT. As always, MultiTech is in lock step with the carriers and prepared with a range of devices designed to leverage these new network technologies to provide the perfect fit for your application.

LTE PRODUCT REFERENCE GUIDE		DEVICE PRODUCTS						EMBEDDED PRODUCTS		
		PROGRAMMABLE		NON-PROGRAMMABLE				PROGRAMMABLE		
		SMART	SMART		BRIDGE	BIT PIPE		SMART		
		MultiTech Conduit ¹	MultiConnect [®] rCell 100	MultiConnect [®] rCell 500	MultiConnect [®] eCell	MultiConnect [®] Cell	QuickCarrier [®] USB-D	MultiConnect [®] microCell	MultiTech Dragonfly [®] Nano [†]	MultiTech Dragonfly [®] [†]
Base Part Number		MTCOT	MTR	MTRS	MTE	MTC	MTD	MTCM/MTCM2	MTON	MTQ
COUNTRY or REGION	Global		•			*		*	*	*
	Australia/New Zealand	•	•						*	*
	Brazil	•	•						*	*
	Europe	•	•	•	•	•		•	•	*
	India	•								
	Japan	•				*			*	*
	Korea	•							*	*
	Russia	*								
	South Africa	*	•							
CELLULAR TECHNOLOGY	US/Canada	•	•		•	•	•	•	•	•
	LTE Category 4	•	•	*	•	•		• EU * US		•
	LTE Category 1	• JP/AU				* JP		• US		•
	LTE Category M1		•			•	•	*	•	•
	NB-IoT		•			*		*	•	*
WIRELESS	OnGo/CBRS		*		• Cat 12			• Cat 6		
	Wi-Fi	•	•	•						•
	Bluetooth	•	•							
	LoRa	•								
SIM SLOTS	GPS/GNSS	•	•	•						•
	Antennas	External	External	External	External	External	Internal	External	Either	Either
	One	•	•		•	•	•	•	•	•
INTERFACES	Two			•						* Cat 4
	Ethernet	•	•	•	•					
	Serial RS232	•	•	•		•				
	Serial RS485	•		•		*				
	USB	•		•		•	•	•	•	•
	USB Powered					•		•		•
	GPIO	•					•		•	•
	UART								•	•
SPI								•	•	
IC2								•	•	

• Included feature * Planned [†] Non-programmable/bit pipe models available

Private LTE OnGo CBRS models available, contact MultiTech for details.

For more information on MultiTech solutions, please contact us today.

