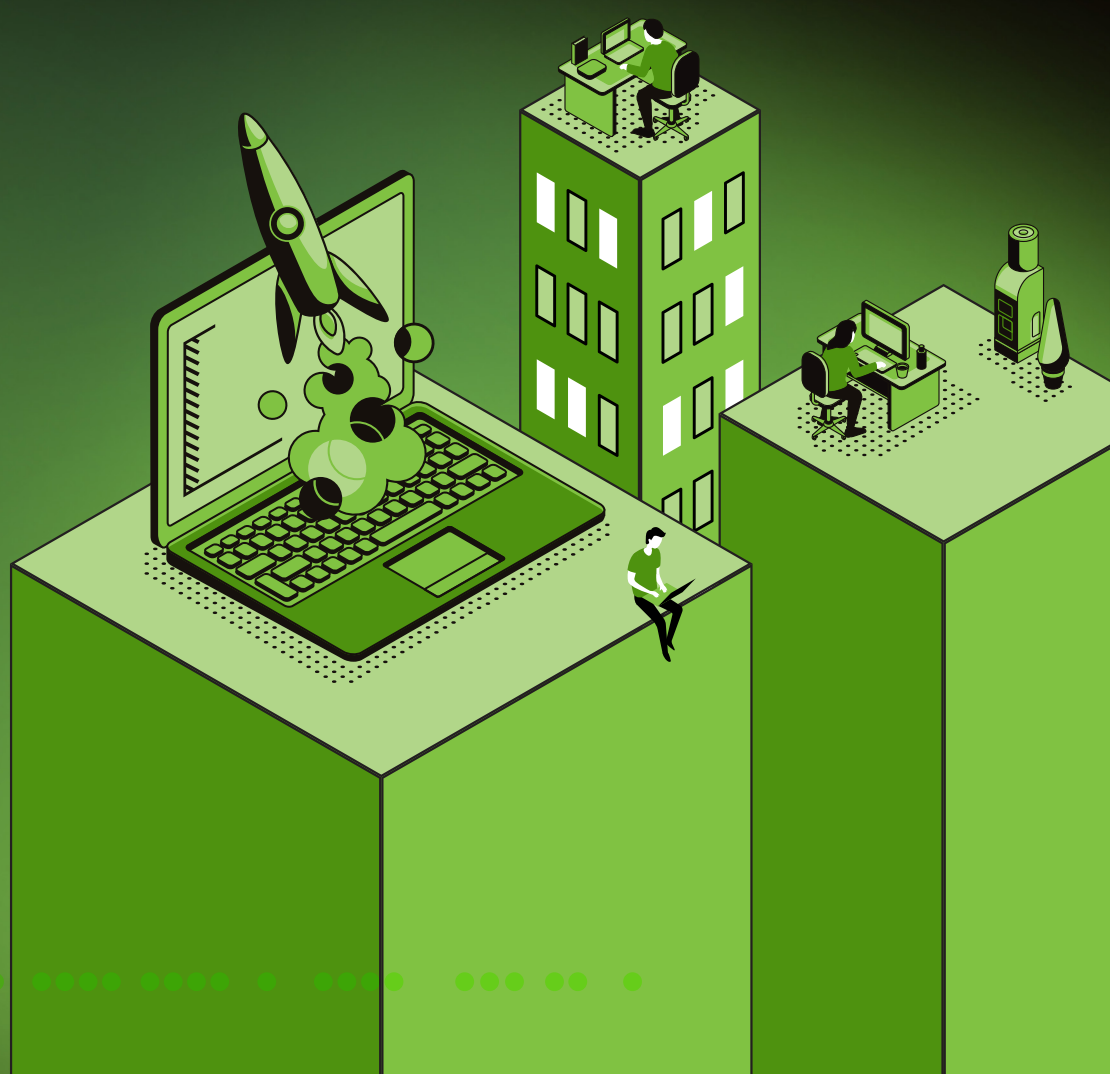


# Power the Mobile World

As workers across the globe suddenly find themselves working in alternate locations, secure and reliable technology becomes ever more critical.

These days, a worker's laptop is their lifeline—the difference between remaining connected and productive or isolated and stagnant. Acer Chromebook Enterprise devices are built for a seamless and productive mobile work experience.

- **Advanced Security Controls:** Acer Chromebook Enterprise devices are equipped with cloud-first security.
- **Optimized Management:** IT can simplify operations and greatly lower required IT resources.
- **Flexible Access:** IT can remotely manage all devices on the network.
- **Access to 24 x 7 Support:** IT has access to support direct from Google.



The Acer Chromebook Enterprise Spin 713 is equipped with the 10th Gen Intel® Core™ i7 processor, co-engineered with Intel.



## Secure by design

Acer Chromebook Enterprise devices have several layers of built-in security.



## Cloud management

IT can manage devices and users from anywhere.



## Easy access to apps

Employees can easily get the apps they need. Acer Chromebook Enterprise devices also work well with the G Suite.



## Rapid deployment

Acer Chromebook Enterprise devices deploy quickly with cloud-based profiles.



To learn more about how Acer Chromebook Enterprise devices can power remote workers, go to <https://www.acer.com/ac/en/US/content/professional-series/acerchromebookenterprisespin713>