

FAT Pipe

EnterpriseView[®]

FatPipe Inc

392 E Winchester St, Salt Lake City, UT 84107 • www.fatpipeinc.com • info@fatpipeinc.com • Tel: 800.724.8521 • 801.281.3434

Fax: 801.281.0317

FatPipe EnterpriseView[®]



FatPipe EnterpriseView™

FatPipe EnterpriseView™ ensures FatPipe appliances can be installed in the network with minimal disruptions and be maintained post installation. FatPipe EnterpriseView™ gives network administrators the ability to monitor, manage, and maintain all FatPipe devices from a central location.

- Agent need not be installed on various end computers, eliminating the security loophole that other monitoring products have and reducing setup time.
- No need to download agents from various sites.
- EnterpriseView™ 2.0 has been designed with the idea of reducing the complexity of installing, configuring, and maintaining multiple FatPipe devices across a global network.

ISPs Status

FatPipe	ISPs
0053B-BA-GB	■ ■ ■ ■ ■ ■ ■ ■ ■ ■
00992-LO-US	■ ■ ■ ■ ■ ■ ■ ■ ■ ■
00C6E-ST-US	■ ■ ■ ■ ■ ■ ■ ■ ■ ■
011A7-ZE-BG	■ ■ ■ ■ ■ ■ ■ ■ ■ ■
03B92-PR-RO	■ ■ ■ ■ ■ ■ ■ ■ ■ ■
03C76-FF-GB	■ ■ ■ ■ ■ ■ ■ ■ ■ ■
04629-SU-CN	■ ■ ■ ■ ■ ■ ■ ■ ■ ■
04A3D-MI-AU	■ ■ ■ ■ ■ ■ ■ ■ ■ ■
04C76-KH-IA	■ ■ ■ ■ ■ ■ ■ ■ ■ ■

IPsec Tunnel Status

FatPipe	IPsec Tunnels
00FE1-AM-US	■ ■ ■ ■ ■ ■ ■ ■ ■ ■
025BF-CA-IT	■ ■ ■ ■ ■ ■ ■ ■ ■ ■
04A3D-MI-AU	■ ■ ■ ■ ■ ■ ■ ■ ■ ■
004A1-TA-ID	■ ■ ■ ■ ■ ■ ■ ■ ■ ■
0053B-BA-GB	■ ■ ■ ■ ■ ■ ■ ■ ■ ■
0087E-VO-RO	■ ■ ■ ■ ■ ■ ■ ■ ■ ■
00992-LO-US	■ ■ ■ ■ ■ ■ ■ ■ ■ ■
00C6E-ST-US	■ ■ ■ ■ ■ ■ ■ ■ ■ ■
00CFF-CA-PH	■ ■ ■ ■ ■ ■ ■ ■ ■ ■

MPsec Overlay Status

FatPipe	MPsec Overlays
004A1-TA-ID	■ ■ ■ ■ ■ ■ ■ ■ ■ ■
0053B-BA-GB	■ ■ ■ ■ ■ ■ ■ ■ ■ ■
0087E-VO-RO	■ ■ ■ ■ ■ ■ ■ ■ ■ ■
00992-LO-US	■ ■ ■ ■ ■ ■ ■ ■ ■ ■
00C6E-ST-US	■ ■ ■ ■ ■ ■ ■ ■ ■ ■
00CFF-CA-PH	■ ■ ■ ■ ■ ■ ■ ■ ■ ■
00D6A-RO-US	■ ■ ■ ■ ■ ■ ■ ■ ■ ■
00FE1-AM-US	■ ■ ■ ■ ■ ■ ■ ■ ■ ■
0106F-JI-PH	■ ■ ■ ■ ■ ■ ■ ■ ■ ■

Monitoring and Alerts

EnterpriseView™ monitors the live status of FatPipe appliances within the network, including the status of the IPsec tunnels, MPsec tunnels, and ISPs connected to the FatPipe appliances. This is supplemented with alerts sent to the relevant persons, thereby allowing network administrators to diagnose any network issues, identify the source of the problem, and resolve them.

Alerts can also be sent to the ISP contact should lines have issues. EnterpriseView™ provides critical alerts whenever a problem arises.

Alerts are:

- Prioritized based on the severity of the issue
- A reconfigurable by the customer and
- Ranked from highest to lowest



ISP Link Quality Measurements

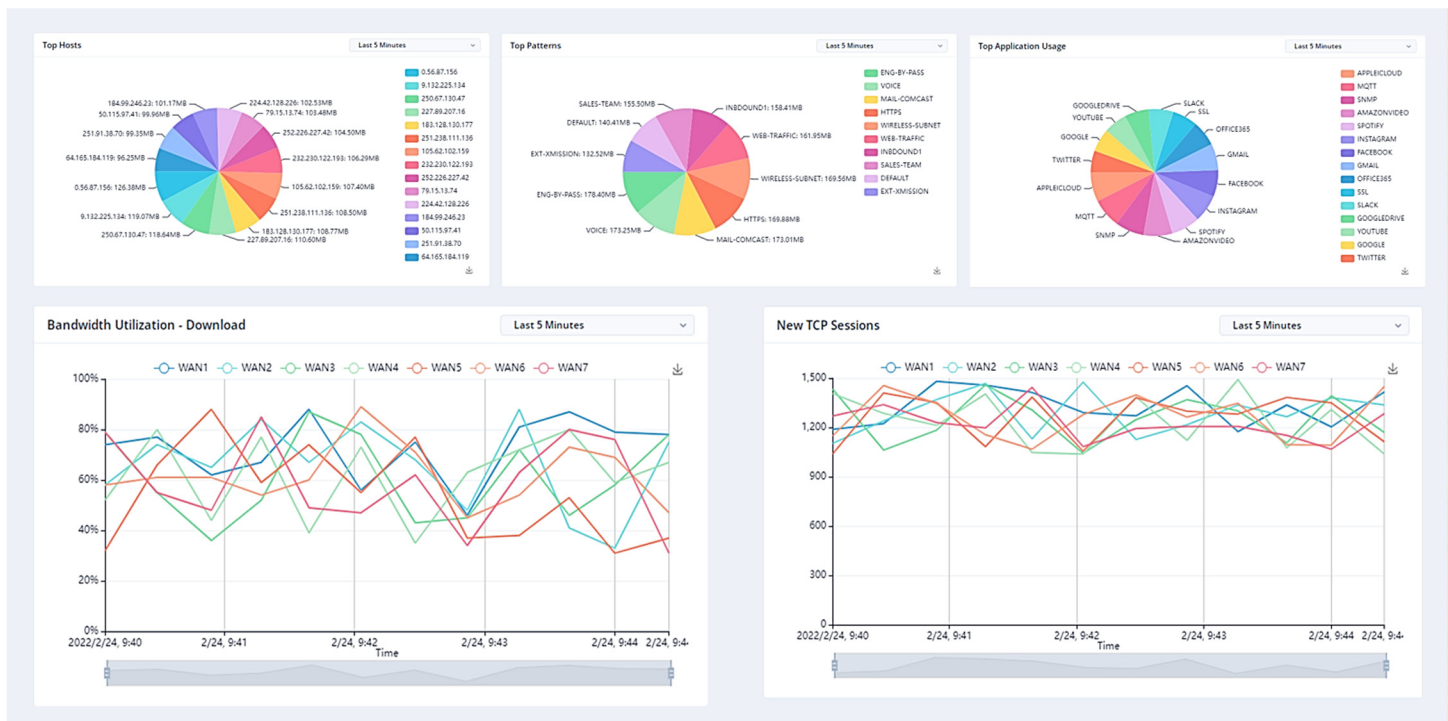
FatPipe EnterpriseView™ monitors ISP link quality to ensure that all links are performing optimally. Any degradation of network quality can be diagnosed and addressed for all data lines connected to a FatPipe box through the EnterpriseView™ dashboard.



Data Visualization and Analytics

EnterpriseView™ aggregates data from FatPipe products to provides data based on application usage, patterns of data, hosts, and usage by session data. This feature allows network administrators to identify potentially malicious traffic and address it immediately, rather than realizing the problem when it's too late.

Statistics are provided on a time series for various aspects of network monitoring statistics. These can be used to notice abnormal behavior on a network and the affected devices/paths. Time-series data can also be compared between different FatPipe appliances to see what times abnormal data was observed.



Security

EnterpriseView™ is built with the security of your network in mind. Data is protected through a series of measures to maintain the security and privacy of your network. This includes:

- TLS 3.0 encryption
- SSL Security and IP whitelisting
- Two-factor authentication
- FedRAMP compliance

Orchestrator

FatPipe EnterpriseView™ can manage configurations and policy propagation for all your FatPipe units, making it easy to manage, configure, and change configurations and policies. Branch offices can have consistent policies downloaded to the edge device. Store your configurations in the cloud and download them in case you need them.

FatPipe WAN Edge Monitoring Services

FatPipe's EnterpriseView™ and Monitoring Services are hosted on Amazon Web Services for reliability and availability. EnterpriseView™ analytics include:

- System statistics
- ISP Status and Uptime
- Diagnostics
- Quality of Service (QoS)
- Alerts – emails and texts
- Daily reports
- Inbound/Outbound Speed monitoring
- Packet Loss, Jitter, Latency control for VoIP
- Protocol Monitoring (TCP, UDP, etc.)
- MPsec Status
- Top Applications
- Top Hosts
- Top Patterns
- Top Talkers
- Top Protocol

Recommended: For basic monitoring use 30 GB for one week of storage. For greater than 300Mb/s WAN speeds, use 60GB or 90GB for storage; for greater than 1 GB/s, use 90GB or 120GB storage for one week of storage. Storage needs are a function of ingestion/polling rates.

Benefits of FatPipe with EnterpriseView™

FatPipe makes the WAN secure, optimized, available, and redundant. The addition of EnterpriseView™ ensures a user experience that is surpassed by none.

- Reliable and high-uptime WAN Edge
- Efficient bandwidth use and cost reduction
- Simple installation to reduce installation costs
- Quality of Service to manage VoIP quality
- Load balancing for VoIP, Video, and VPN
- Ability to handle public and private networks seamlessly and simultaneously
- Central control of all FatPipe devices
- In-depth reports on network conditions
- Simplified global change procedure

FatPipe is designed for ease of use. Its modular architecture allows it to grow along with the growth of your company and network configurations.

FatPipe EnterpriseView™ Cost Savings

FatPipe Enterprise View is the lowest priced network monitoring tool available in the market with the features that a network administrator needs to manage the network. After all, the product was developed by network engineers, and FatPipe knows networks!

FatPipe Inc

392 East Winchester Street, Salt Lake City, Utah 84107

www.fatpipe.com • info@fatpipeinc.com Tel: 800.724.8521 • 801.281.3434 • Fax: 801-847-6600

FatPipe Networks™, MPVPN®, MPsec™, Datacenter-to-Branch®, Datacenter-to-Device®, and FatPipe Symphony™ are trademarks or registered trademarks of FatPipe Networks and other countries. All other product names mentioned herein are trademarks of their respective owners.

© FatPipe Networks

FatPipe owns US Patent Numbers: 6,253,247; 6,295,276; 6,493,341; 6,775,235; 7,269,143; 7,406,048; 7,444,506; 7,877,510; 8,356,346; 8,780,811; 8,995,252; 10,164,822; & 10,965,649
