

At a glance



Speed time to value for your AI initiatives

AI can take your business into new frontiers and power your organization in new ways. Whether you're leveraging generative AI or classical machine learning (ML) models, AI has the potential to drive innovation, create new experiences, and keep you well-positioned in the market.



**Hewlett Packard
Enterprise**

Is your enterprise ready to harness the power of AI?

To get value from your first AI applications and workloads as quickly as possible, you need to be able to:

Meet the demands of your data users and developers who need to collaborate

Fine-tune and train models, quickly and accurately

Get value from AI, all the way from your data center to the edge

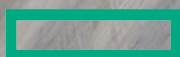


Enable teams with easy, self-service access to the enterprise-grade open-source tools and off-the-shelf frameworks they need

Quickly implement generative AI and ML workloads, used to drive innovation

A checklist for your early AI moves

- Leverage a turnkey enterprise solution to kick-start your generative AI journey—for enterprises of all sizes
- Empower data users with data that's ready for analysis—and at scale
- Foster collaboration with an environment that improves resource utilization built on your domain data
- Harness AI at the edge to gain insights and deploy AI applications on infrastructure closer to your business and data at the edge



The advantages of advancing with AI solutions from HPE

- Shape higher volumes of public and proprietary data across multigen IT while simplifying the operating experience across the entire IT estate
- Improve resource utilization by removing the need for writing infrastructure code and fine-tuning differentiated foundation models built on your domain data
- Empower developer teams with the tools and resources they need while ensuring a consistent user experience
- Support computationally intensive demands as you process massive amounts of data in the data center or at the edge
- Enable frequent model iterations and faster data processing; aggregate any data type into datasets, ready to be used for analysis—and at scale
- Run AI workloads anywhere, from edge to cloud

Start unlocking value now

Swiftly move ahead in your AI journey and accelerate your time to value with AI solutions, comprising software and infrastructure, from HPE.

Despite its vast potential, AI remains uncharted territory for some businesses

Keep a lookout for these potential obstacles:

• Hybrid complexities

AI means hybrid by necessity. You need ways to manage hybrid complexities. But monitoring security and compliance across hybrid locations can be challenging.

• Support requirements for open-source tools

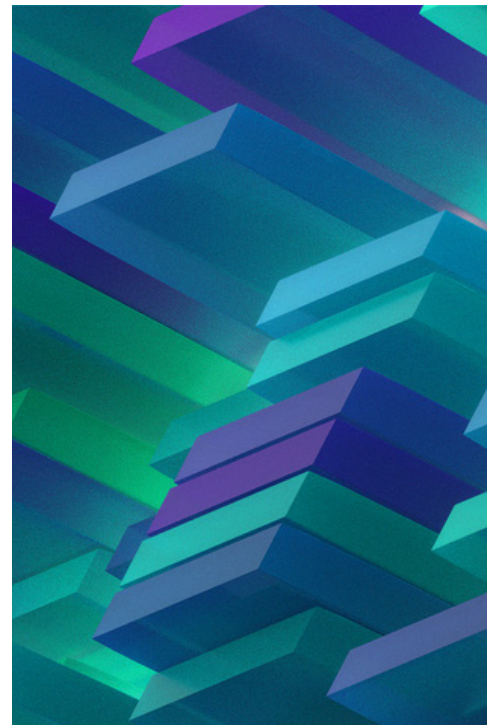
Data users need access to tools that enhance productivity, but your current infrastructure may lack interoperability and have a complex and expensive lifecycle management.

• Infrastructure that doesn't match business needs

Legacy systems often prove inadequate for handling huge, complex data pipelines needed for AI initiatives.

• Model-related conundrums

AI models are not one size fits all and are advancing rapidly. These models can create unprecedented demands on IT and business—and introduce new requirements that are a first for many organizations.



Quickly get started with your first AI initiatives

Hewlett Packard Enterprise can help you speed time to value now and prepare your organization for what comes next. Here are four ways to quickly get started.

- 1. Unleash innovation as you streamline generative AI production**
Tune and deploy AI models at scale with a preconfigured full-stack enterprise tuning and inference solution
- 2. Accelerate the ability to develop and deploy AI models**
Confidently develop, deploy, and monitor AI applications and workloads across hybrid and multicloud environments. Software from HPE enables you to operationalize analytics and AI, from edge to cloud
- 3. Simplify generative AI and ML workloads**
Enable engineers and data scientists to collaborate and build more accurate models with an intuitive, high-performance development environment
- 4. Deploy AI at the edge**
Automate operations and gain insights in real time with purpose-built compute that brings AI applications closer to the business while optimizing performance, security, and control

Explore how you can create your AI advantage with HPE

Learn more

Streamline custom generative AI production

[HPE's enterprise computing solution for Generative AI](#)

Accelerate the ability to develop and deploy AI models

[HPE Ezmeral Unified Analytics Software](#)

Simply implement generative AI and ML workloads

[HPE Machine Learning Development Environment Software](#)

Deploy AI at the edge

[HPE ProLiant DL320 Gen11](#)

