

Surface for Nonprofit



The changing workplace of Nonprofit

Serving organizational needs in the hybrid working world



Support staff productivity
for hybrid work



Digitally transform core processes
to better serve the mission



Deploy, manage, and stay
secure anywhere

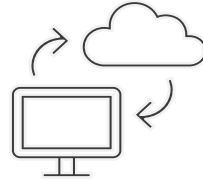


Surface is built to help you deliver effective programming and accelerate mission outcomes



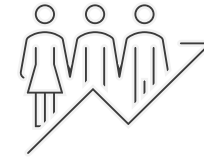
Security

Security from **chip-to-cloud**— a zero-trust security model that starts with Surface devices²



Deployment & Management

Zero-touch deployment and unified management reduce costs and complexity for a distributed workforce¹



Productivity

Flexible, premium devices for innovative processes, demanding analysis, and easy collaboration with donors and supporters



Surface portfolio

2-in-1s

Versatile Tablet + Laptop devices that provide mobile productivity for workers on the go.

Best for:

Volunteer coordinators, Fundraising managers, volunteers

Laptops

All the power of a static desktop in a sleek, modern form factors built for hybrid and remote workers.

Best for:

Leadership, gift officers, program managers, marketers, developers

Large screens

A family of devices that revolutionized a new category of computing focused on flexibility, collaboration, and mobility.

Best for:

Marketing teams, executives



Go 4

The **smallest, lightest Surface** with touch and ink capacitive PixelSense™ display



Pro 8

The iconic Surface 2-in-1 that is **ultra-light and versatile** with LTE Advanced Connectivity



Pro 9

Get **tablet flexibility and laptop performance**, with your choice of Intel® Evo™¹ or Microsoft SQ® 3 with 5G²



Laptop Go 3

Exceptional value for the style, performance, and battery life expected from Surface



Laptop 5

Sleek, lightweight, touchscreen laptop with the **style, speed, and performance** to do it all



Laptop Studio 2

Our most powerful **Surface laptop** delivers speed, graphics and versatility to run business-critical applications



Studio 2+

Professional-grade performance on a versatile **all-in-one device** with strikingly large touchscreen



Hub 3

Enable teamwork anywhere with this Microsoft Teams-certified **meetings platform and modern collaborative canvas**

Images not to scale

Designed for work. Optimized for nonprofit.

“With Microsoft Surface, we’re providing a highly capable device, reducing down time and decreasing provisioning time with Microsoft Intune and Autopilot. Now Make-A-Wish staff and volunteers can better focus on their passion to serve wish kids across the country.”

Travis Gibson – CISM: Senior Director of Infrastructure, Security, and Operations, [Make-A-Wish America](#)



Make-A-Wish selected Microsoft Surface Laptop 4 to help transform how it restores hope and joy for wish kids and their families when they need it most. After converting Make-A-Wish to Office 365 and Azure, adding Surface devices unified the organization so its staff could better focus on the mission. IT and staff are benefitting from a deeply coordinated toolset with Microsoft Teams, Windows Autopilot, Defender for Microsoft 365, Microsoft Intune, and Surface Management Portal.



“I got really excited about the accessibility features of the Surface Laptop Go. We have a lot of monolingual residents that speak many different languages. One of the features I liked was the fact that you could change your language and change your keyboard.”

Maria Ursua – Support Services Coordinator, [Seattle Housing Authority](#)



“By adopting Microsoft 365, the Microsoft Cloud, and Surface devices, technology supports what we’re doing and where we’re going as an organization.”

Kieron Thorpe – Head of Operating Technology, [Bernardo's](#)



“All the Microsoft tools automatically work with the Microsoft Surface. I use Microsoft Teams to manage my team. It allows people who traditionally wouldn't have that ability to collaborate to work from home – now they can.”

Raj Jeyaraj – Head of Operations, [Inclusion Scotland](#)

