

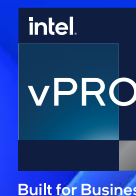
Lenovo + Microsoft Windows 11

Upgrade Reference Guide

With modern Lenovo devices running Microsoft Windows 11, IT leaders harness device management in a hybrid work world and equip their teams to thrive.



Lenovo recommends
Windows 11 Pro for Business.



Smarter
technology
for all

Lenovo



In this guide

Why Lenovo and Windows 11?	3
Compatible device list	7
Windows 11 overview for IT pros	8
Upgrade checklist	9
Technical specs and frequently asked questions	10
Additional resources	12

Why upgrade to Windows 11 with Lenovo?

Where and how we work has changed dramatically — and so has IT management. For today's IT teams to work confidently across hybrid environments, they need to deploy, secure, and manage devices remotely.

Lenovo helps IT pros simplify IT management without interruption. We're always in pursuit of smarter solutions to meet the challenges you face today, tomorrow, and beyond. That's why we're excited about the Windows 11 operating system upgrade and want to help your teams feel just as confident.

Windows 11 is designed for hybrid work. Purposeful new features and functionality enhance portability and reliability, while a deeper integration with Microsoft Teams and other collaboration and communication apps streamlines the UX.

Users can create multiple custom desktops on one PC, instantly share or directly mute and unmute from the taskbar, simplify routine tasks like data entry and scheduling, and get things done with fewer clicks and more intuitive navigation.

But a streamlined UI is just the start.

Windows 11 also focuses on today's most pressing IT concerns — security, manageability, and employee productivity. The benefits of Windows 11 are amplified on hybrid-ready Lenovo devices.



Lenovo recommends
Windows 11 Pro for Business.

83%

of IT leaders expect at least half of work in the future to happen outside a traditional office.¹



Lenovo

Lenovo's powerful security + Windows 11's pre-enabled protection: Ready for a flexible future

Protecting company data, assets, and users has never been more essential. But it's challenging to protect distributed teams in a work-from-anywhere world. The powerful built-in security of Lenovo ThinkShield and Windows 11 fortifies the hybrid workplace, mitigates risk with an end-to-end approach to security, and delivers the best protection possible.

Built-in security ensures protections are ready without having to configure devices. Microsoft has increased the security baseline by requiring a security chip (TPM 2) and ensuring protections are built in and turned on by default to protect from malware and sophisticated attacks.

Pre-enabled virtualization-based security (VBS) and hypervisor-enforced code integrity (HVCI) safeguard the operating system and information stored in memory. Secured-core PCs built on this foundation are twice as resilient against malware.⁴

Defending your business from tomorrow's threats requires innovative security solutions like those on Lenovo devices running Windows 11. Secure the future of work with Zero Trust-ready OS and AI endpoint protection by SentinelOne, hardware isolation, encryption, malware protection, and integrated hardware and OS safeguards. Simplified steps to deploy Windows Hello for Business (requires TPM 2 or greater) make password-less protection easier, too.



Lenovo recommends
Windows 11 Pro for Business.

Lenovo security innovations fortify a fleet running Windows 11

ThinkShield

Fully customizable hardware, software, and services solutions to secure your enterprise.

Secure Wipe 2.0

Delete sensitive data on a drive without external tools or removing the drive, and run log reports confirming the SSD or HDD has been wiped.

Firmware Resiliency 2.0

Expand self-healing capabilities beyond the core BIOS. Provides autonomous, non-bypassable, and immutable attestation functionality that becomes the additional hardware root of trust measure and verifies the signatures of multiple parts of the platform hardware, firmware, and configuration.

Human presence detection

Screen lock detects when the user leaves and automatically locks the system.

Non-soldered SSDs

Remove before servicing to secure data and keep it under IT control.

Intelligent PC diagnostics

Use a simple smartphone app to track more precise servicing results.

2/3

of businesses that suffered a breach didn't know about it for several months.²

59%

of financial services companies worldwide have over 500 passwords that never expire. Nearly 40% have more than 10,000 inactive but enabled users.³

Lenovo's smarter IT + Windows 11's seamless setup: Productivity from the get-go

With Windows 11 remote deployment and compliance, you can deploy remote PCs through the cloud in compliance with company policies. Expanded support for group policy administrative templates in mobile device management solutions like Microsoft Endpoint Manager enable you to easily apply the same security policies to on-premises and remote devices. Cloud-managed security updates offer additional control. Approve, schedule, and monitor any Windows Update content through the cloud, including security updates, drivers, and firmware.

Windows 11 allows for better performance consistency — critical for IT — across device configurations with new minimum system requirements. In terms of ease of migration, Windows 11 is built on the same core as Windows 10, supporting the same IT management tools that you use today. Most software and accessories that worked with Windows 10 are expected to work with Windows 11.

Lenovo devices running Windows 11 give your remote workforce the same advanced security protections they would get at the office, and you'll be able to use Windows Autopilot to provision Windows 11 devices for end users with greater peace of mind. Windows Autopilot zero-touch deployment lets employees simply unbox their device and start working.



Lenovo recommends
Windows 11 Pro for Business.



Lenovo devices designed for the modern workforce complement an OS designed for hybrid work

ThinkPad® X1 Fold

Our most diverse form factor, plus Windows 11 fluid tablet experience and snap layout, gives an even greater lift to employee experience and productivity.

ThinkPad® X1 Carbon

An ultra-powerful device, plus Windows 11's meeting and sharing innovations, makes way for enhanced collaboration — no matter where work happens.

ThinkPad® X1 Yoga

Thin and light ultra-portability, plus Windows 11 remote-readiness, means effective work from anywhere with colleagues everywhere.

Lenovo ThinkBook Plus Gen 2

A large e-ink display, plus Windows 11's customizable UX, powers modern multitasking for productive mobile professionals.

Lenovo's business-grade durability + Windows 11's streamlined UX: Teamwork for modern team work

The latest evolution of Windows offers a smarter way to collaborate with Microsoft Teams, making it easier to meet and share content. Windows 11 introduces improved multifinger touch for a more fluid tablet experience, personalized widgets, voice typing, intelligent noise canceling and blur, and Snap Groups that allows a user to “snap” together apps or create a grouping for a particular project.

IT pros are more focused than ever before on employee experience (EX), and Windows 11 doesn't disappoint. Companies that invest in EX are four times more profitable than those that don't.⁵ Employee retention is also higher, further reducing security risks.

IT contributes to improving employee retention efforts and business continuity by providing a personalized computing experience with Windows 11. Partnered with a modern Lenovo device that matches even the busiest day, Lenovo keeps your workforce humming.

Lenovo smart battery management, for example, uses recent charging history to make small changes that improve long-term battery lifespan and extend the value of your IT investment. We continue to push the limits of innovation through technology to help you dominate the rigors of everyday work life.



Lenovo recommends
Windows 11 Pro for Business.

Lenovo performance innovations elevate Windows 11 user-focused features



Smart Standby

A unique Lenovo enhancement that allows users to manage and configure low-power states to maximize battery life.



Always On/ Always Connected

Optimizes teams' productivity and collaboration by empowering full wireless performance connectivity in any mode — even with the lid closed.



5G and Wi-Fi 6 antenna designs

Newly engineered to provide epic connectivity.



Intelligent cooling

With an auto mode setting.



Dolby far-field mics

Lenovo was first in the industry to support Dolby Voice for stereo spatial voice for clearer sound in noisy environments.

Find the right device for each employee

For IT leaders who need a PC designed for the modern workforce, Lenovo ThinkPad® and ThinkBook products running Windows 11 provide the ultimate working experience from anywhere, without compromising performance or security. [Learn more and find expert support here.](#)

Lenovo ThinkPad® models compatible with Windows 11

Plan, manage, and secure your fleet with confidence. Provide a premium PC experience with the following devices, all compatible with the next evolution of Windows.



Lenovo recommends
Windows 11 Pro for Business.



ThinkPad X1 Nano
ThinkPad X1 Carbon Gen 9
ThinkPad X1 Yoga Gen 6
ThinkPad X1 Titanium (1Q)
ThinkPad X1 Fold
ThinkPad 11e 5th Gen
ThinkPad 11e Yoga Gen 6
ThinkPad X12 Detachable
ThinkPad X13 Yoga G2

ThinkPad X13 G2
ThinkPad T14s G2
ThinkPad T15 G2
ThinkPad P1 Gen 4
ThinkPad P15s G2
ThinkPad P14s G2
ThinkPad X1 Extreme G4
ThinkPad L14 G2
ThinkPad L15 G2

ThinkPad L13 G2
ThinkPad L13 G2 Yoga
ThinkPad T14 G2 AMD
ThinkPad T14s G2 AMD
ThinkPad X13 G2 AMD
ThinkPad L14 G2 AMD
ThinkPad L15 G2 AMD
ThinkPad L13 G2 AMD
ThinkPad L13 G2 Yoga AMD

Lenovo ThinkBooks compatible with Windows 11

Lenovo ThinkBook products with Windows 11 are designed for the modern workforce. Their smart features ensure you have all the technology you need to do your job seamlessly. [See the full list here.](#)

Lenovo X1 ThinkPad innovations bolster Windows 11's best features

The X1 family has a premium device for every work style, in every workplace, all backed by the ThinkPad promise of quality, innovation, and design. [Explore them all here.](#)

Lenovo's Windows 11 overview for IT pros

Moving to Windows 11 will feel more like an update than a major upgrade, and will deliver new user experience and feature benefits designed to give employees a more productive and secure hybrid work experience. All the new Microsoft OS benefits are amplified by the quality, design, and innovation of modern Lenovo devices. Here's what you need to know.



Lenovo recommends
Windows 11 Pro for Business.

Windows 11 in brief

Windows 11 provides a familiar but modern and refreshed interface that helps increase productivity and enhances the collaboration experience for end users while maintaining consistent management for IT-managed devices — right from the start.

- **Powerful for employees.** Offers new productivity features and functionality designed to meet the challenges of the hybrid world, with a completely refreshed look and feel that helps users get more done with less stress.
- **Consistent for IT.** Fits right into existing processes. Windows 11 is based on the same foundation as Windows 10, so it's consistent for IT and will support the same IT management tools you use today.
- **Secure for all.** Powerful built-in security including hardware-based isolation, encryption, and malware protection. Cloud configuration simply secures a Windows 11 device for curated apps and access. App compatibility and cloud management make adoption easy.

Timeline to accelerate a modern workplace

Now. Most devices available for purchase now will be upgradable to Windows 11.

Late 2021. PCs with Windows 11 pre-installed will be available later this year.

Early 2022. The upgrade is expected to be available for current Windows 10 PCs in early 2022. Not all eligible Windows 10 PCs will be offered the upgrade at the same time. Windows will send a notification once an eligible Windows 10 PC has been tested and validated for the free upgrade. Once the upgrade rollout has started, users can check the status of a device by navigating to "Windows Update" in "Settings."

October 14, 2025. Windows 10 remains supported through October 14, 2025, as originally announced at its launch. Customers using long-term service releases (LTSC and LTSB) will continue to be supported through those published end-of-support dates.

Noteworthy feature benefits for a flexible workforce

- **Zero Trust-ready OS** to protect data and access, anywhere
- **Simple, powerful UX** to improve employee productivity
- **Customizable desktop, workflow automation, and snap layout** for a personalized workday that supports employee retention
- **Smarter employee collaboration** with Microsoft Teams

Six steps for migrating to Windows 11

Lenovo and Windows 11 are hybrid work's dynamic duo. Planning your company's upgrade today is a smart IT strategy.

Get support for a smooth transition

Whether you're getting a new ThinkPad X1 or upgrading an entire fleet, Lenovo's Microsoft-certified experts help any business migrate with ease and take full advantage of this industry-leading solution. Speak with your Lenovo representative today.

1

Learn the system requirements.

Review the **basic and features-specific requirements** for installing Windows 11 on a PC.

2

Inventory your fleet's compatibility.

Determine which devices in your network meet the minimum system requirements. Organizations will be able to move eligible PCs directly to Windows 11 using Windows Update for Business.

3

Confirm with partners and check accessories.

Ensure Windows 11 is included in your enterprise subscription and check with your PC OEM for any additional information. Most software (including third-party ISV security solutions) and accessories that work with Windows 10 are expected to work with Windows 11. Check with your software publisher or accessory manufacturer for specific details on your products.

4

Validate business-critical applications.

App compatibility is a core design tenet of Windows 11. For peace of mind, use **Test Base for Microsoft 365** to test your applications in preview. If any compatibility issues arise, Microsoft App Assure will remediate them.

5

Develop a rollout schedule.

The upgrade is slated to begin in late 2021 and continue into 2022, but specific timing will vary by device. If a device doesn't meet the basic system requirements, you may not be able to install Windows 11 and should include time in your plan to purchase an upgradable PC.

6

Enlist an expert.

As a trusted Microsoft partner with certified global expertise, Lenovo can help deploy, configure, and support the latest solutions so you can unlock all the benefits of Windows 11.



Lenovo recommends
Windows 11 Pro for Business.

Technical specs and frequently asked questions

Are the Lenovo devices in my current fleet upgradable?

If your existing Lenovo PC is running the current version of Windows 10 and meets the minimum hardware specifications to run Windows 11, it will be able to upgrade. Specific timing will vary by device. Windows will send a notification once an eligible PC has been tested and validated for the free upgrade, starting in early 2022.

Which Lenovo devices that I buy now will be upgradable to Windows 11?

We offer a wide selection with Windows 11 pre-loaded or upgradable to the new system. Look for devices that indicate they are eligible for the upgrade or ask your Lenovo representative to confirm. For a full list of compatible Lenovo ThinkPad PCs, refer to our [list of devices](#).

What is an update versus an upgrade?

An update is a change within a version of a Windows product — for example, moving from Windows 10, version 2004 (the Windows 10 May 2020 update) to Windows 10, version 20H2 (the Windows 10 October 2020 update). An upgrade is when you change OS versions — for example, moving from Windows 10 to Windows 11, or when you upgrade to a higher edition within the same OS version (e.g., Windows 10 Home to Windows 10 Pro).

What are the basics of the free upgrade offer for Windows 11?

The upgrade to Windows 11 is available for devices running Windows 10, version 20H1 or newer, on eligible hardware. Please view the [full minimum hardware requirements and specs](#).



Lenovo recommends Windows 11 Pro for Business.

Basic requirements for installing Windows 11

Processor

1 GHz or faster with 2 or more cores on a compatible 64-bit processor or system on a chip (SoC)

RAM

4GB

Storage

64 GB or larger storage device

Firmware

UEFI system, Secure Boot-capable

TPM

Version 2.0

Graphics card

Compatible with DirectX 12 or later with WDDM 2.0 driver

Display

High definition (720p) display that is greater than 9" diagonally, 8 bits per color channel

Internet access

A significant download is required to complete this upgrade and ISP fees may apply in areas where the internet is metered

Other

Some features in Windows 11 have **increased hardware requirements** and some require a Microsoft account

We recommend Windows 11-compatible devices from Lenovo's **ThinkPad X1** and **ThinkBook Gen 2** series for best-in-class business performance.

Frequently asked questions continued

Will my current Windows 10 applications, devices, and accessories work with Windows 11?

Yes, most applications, devices, and accessories that worked with Windows 10 will be compatible with Windows 11. You can also check with the software, device, or accessory manufacturer to confirm compatibility.

Will all my third-party Windows 11 security solutions continue to work across Windows 10 and Windows 11? Will I have to upgrade those solutions before they are supported on Windows 11 and Windows 10?

Most software and accessories that worked with Windows 10 are expected to work with Windows 11. Check with your software publisher or accessory manufacturer for specific details on your products.

What edition of Windows 11 will I get when I upgrade?

The upgrade to Windows 11 is for the same edition as you have on your Windows 10 device. Devices with Windows 10 Pro installed will be upgraded to Windows 11 Pro. Devices running Windows 10 Enterprise will upgrade to Windows 11 Enterprise. Windows 11 Pro is not offered in S mode, so you will need to switch out of S mode to upgrade.

What is the upgrade path from Windows 10 to Windows 11? My company still has some Windows 7 devices. If they meet the hardware floor, can these be upgraded directly to Windows 11?

Most devices available for purchase now will be upgradable to Windows 11. You will have the option to upgrade, clean install, or reimage Windows 10 devices to move to Windows 11. For Windows 7 devices that meet hardware requirements, you will need to clean install or reimage to go directly to Windows 11. Please view the [full minimum hardware requirements and specs](#).

What is the activation and provisioning process for my remote users? Is it the same as Windows 10?

Windows 11 has been built on the same core as Windows 10, so you'll continue with the same experience you're accustomed to.

I use Windows Autopilot to provision devices for end users. Will Windows Autopilot be available for Windows 11?

Yes, you will be able to use Windows Autopilot for Windows 11 devices.

As an IT pro, can I manage or remove certain new features in Windows 11 that I may not want in my install base or to expose to my users?

Similar to previous versions of Windows, IT will have control over certain policies that will effectively manage or remove certain features. Windows 11 has been built on the same core as Windows 10, so you will continue with the same experience you're accustomed to on Windows 10.

How does Windows 11 impact my current deployment of Windows 10?

Windows 11 and Windows 10 can be deployed, managed, and serviced in the same way, as both versions of Windows use the same deployment, management, and servicing tools. In terms of deployment, you can consider Windows 11 and Windows 10 as two different releases of the same OS.

Can I run both Windows 11 and Windows 10 in parallel? If so, do I use the same process and tools to manage both?

Yes, Windows 11 is based on the same foundation as Windows 10, so they can coexist, and the same processes and tools are used to manage them.

Who do I contact if I have issues in upgrading to Windows 11 or general support questions?

Visit [Microsoft Support](#) and contact your Lenovo sales representative.



Lenovo recommends
Windows 11 Pro for Business.

Additional resources

Microsoft support

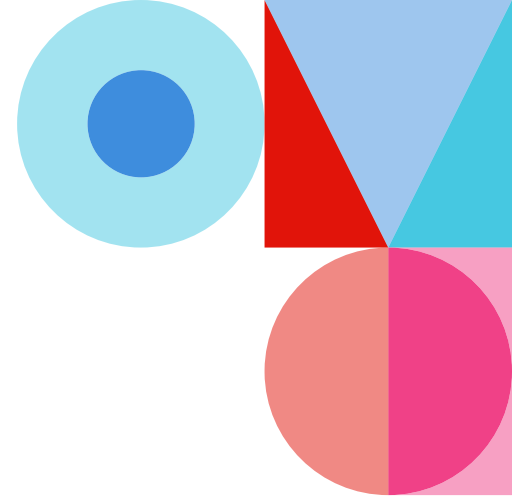
- Hardware requirements and specs
- Windows 11 Pro information
- Windows 11 Enterprise information
- General upgrade support
- Windows 11 learning modules (forthcoming)
- PC Health Check app for compatibility (forthcoming)

Lenovo services and solutions

- Lenovo Managed Services
- Lenovo DaaS
- Lenovo Premier Support



Lenovo recommends
Windows 11 Pro for Business.



Get ready for Windows 11 with Lenovo

Keep your business humming regardless of where teams are working. Lenovo has the devices and solutions to reduce risk and downtime dramatically, and our experts make device deployments and updates secure and simple.

We can free up your IT team and deliver a smooth transition to Windows 11. **Speak with your Lenovo representative today.**

SOURCES

- 1 Lenovo, "The Future of Work and Digital Transformation," 2021
- 2 Verizon, "2018 Data Breach Investigations Report," 11th Edition, April 2018
- 3 Varonis, "2020 Data Risk Report: Financial Services"
- 4 Windows 11 customer pitch deck, 2021
- 5 Manpower Group, "Millennial Careers — 2020 Vision"



Lenovo

© Lenovo 2021. All rights reserved. v1.00 September 2021.