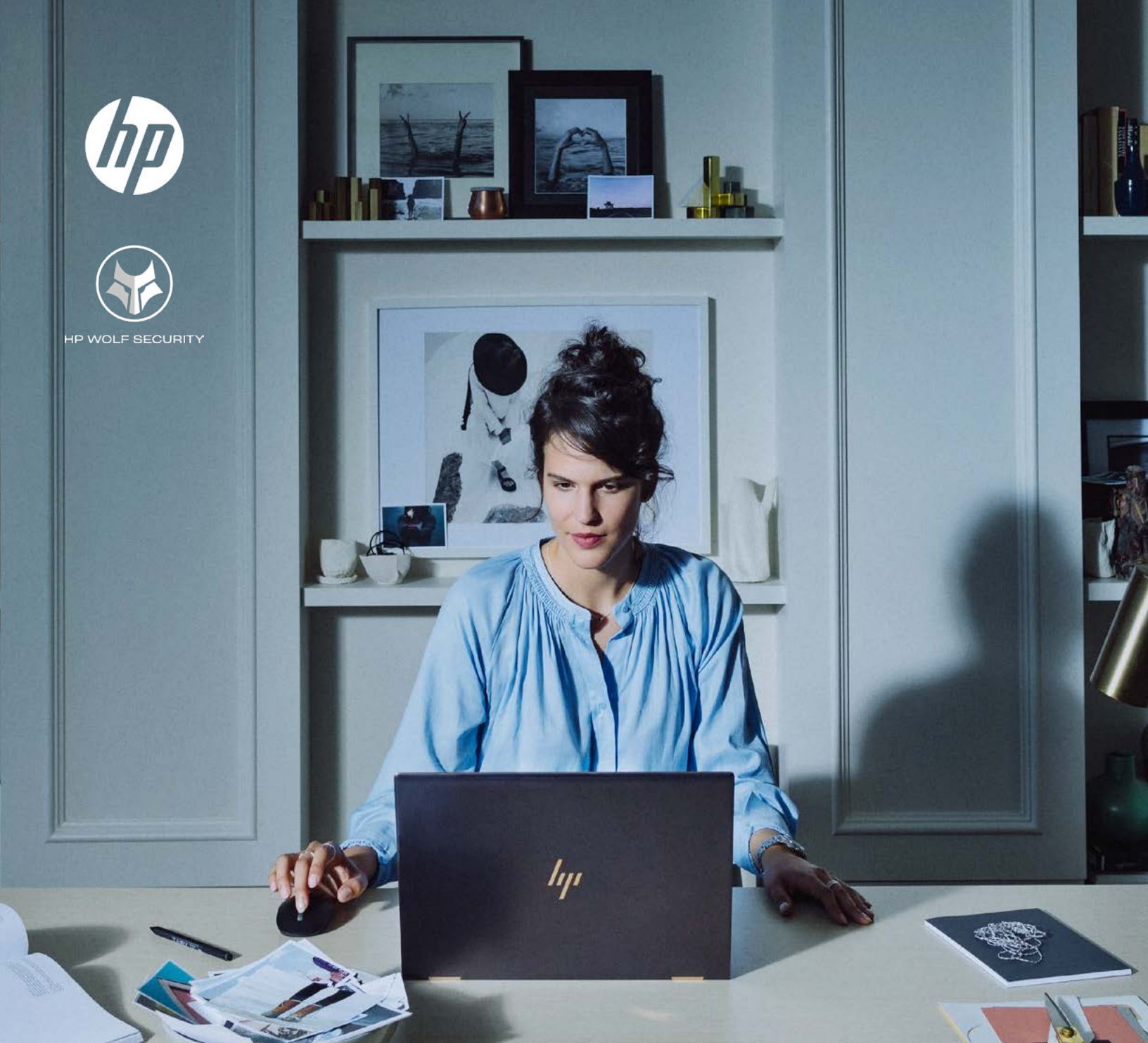




HP WOLF SECURITY



HP WOLF SECURITY
THE PROTECTION YOU NEED
IN A HYBRID WORK WORLD

400%

CYBERATTACKS INCREASED BY UP TO 400% AT THE START OF 2020, ACCORDING TO THE FBI.¹



HYBRID WORK IS HERE TO STAY

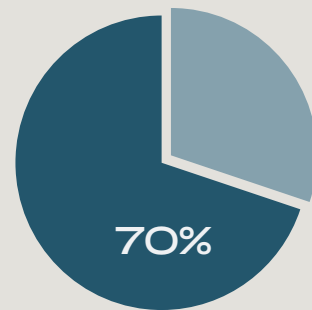
Now that people can truly work from anywhere, companies face a growing dilemma: How to build the distributed, hybrid workforce of the future, without exposing their organization to unprecedented levels of cyber risk.

After all, the number of endpoints to protect has exploded. Cybercriminals have gone on a record-breaking offensive in their quest to exploit vulnerabilities. Even the strongest IT professionals are worn down by the sheer scale of daily attacks.

HP WOLF SECURITY IS HERE TO HELP

The world's most secure PCs³ and printers⁴ set the foundation, with built-in protection against cyberthreats. Then come the extra layers of defense through HP Wolf Pro Security and HP Wolf Enterprise Security, which let you call upon cybersecurity experts to support your overworked team, intelligent automation to keep information flowing securely, and the many other tools HP provides to make IT teams' lives easier.

Built on a zero-trust approach that has been fundamental to HP's PC and printer designs for 20 years, HP Wolf Security helps ensure your employees securely access the data, services, and workflows they need to keep their day moving.



70% OF MEDIUM AND ENTERPRISE BUSINESSES AGREE THAT A MORE DISTRIBUTED WORKFORCE RAISES SECURITY RISKS AND PROCESSES.²

HP'S ZERO-TRUST APPROACH REDUCES THE ATTACK SURFACE TO MAKE YOUR ORGANIZATION MORE RESILIENT

HP WOLF SECURITY FOR PCs



HP SURE SENSE PRO

Deep learning AI detects and protects against unknown malware and ransomware.

HP SURE CLICK PRO

Bulletproof your endpoints with micro VMs to trap malware hiding in web pages and attachments.

HP SURE VIEW

Give employees privacy on the go with HP's integrated screen technology (optional feature).

HP WOLF SECURITY FOR PRINTERS



SECURE BOOT

Automatically checks critical code during startup and stops if it's compromised.

FIRMWARE CODE-SIGNING VALIDATION

Validates memory code, then stops and notifies you if it's not authentic.

WRITE-PROTECTED MEMORY

Prevents introduction of malicious code while the printer is running.

AUTOMATIC FIRMWARE UPDATES

Helps ensure your devices are running without known vulnerabilities.

EXTRA LAYERS OF PROTECTION WITH HP WOLF ENTERPRISE SECURITY

HP Wolf Enterprise Security adds the extra layers of protection that enterprises and government bodies need. On PCs, that means Enterprise versions of HP Sure Sense and HP Sure Click, while HP Sure Access Enterprise creates barriers around key software—and sensitive data—to ward off malware and phishing attacks.

You can also count on industry-leading protection⁴ with unique self-healing features available only on HP Enterprise printers, including HP Sure Start and HP Connection Inspector. Each layer continuously validates critical printer elements and reboots to safety if there's a threat.

FREE YOUR TEAM SO THEY CAN FOCUS ON PROJECTS
THAT BENEFIT YOUR BUSINESS

HP WOLF PRO SECURITY



HP WOLF PRO SECURITY FOR PCs

HP WOLF PRO SECURITY SERVICE

Adds HP Sure Click Pro and HP Sure Sense Pro across all Windows 10 PCs, not just HP systems, in your user base.

HP TECHPULSE

Identify, predict, and address potential security issues with unique analytics technology based on billions of data points.

HP WOLF ENDPOINT SECURITY SERVICE

Let HP's credentialed security professionals monitor, detect, and respond to threats across your multi-OS endpoints.

HP WOLF PRO SECURITY FOR PRINTERS

HP PRINT SECURITY ACTION PLAN AND ASSESSMENT TOOLS

Let print security pros assess your devices, give you guidance, and support setup and maintenance.

HP SECURITY MANAGER

Automate assessments and fixes, establish security policies, maintain ongoing compliance, and protect at-risk printers across your fleet.⁵

HP SECURE PRINT

Protect documents and reduce waste by sending documents to shared printers and letting authorized users release them at the printer.⁶

MANAGED RESILIENCE SO YOUR TEAM STAYS FOCUSED
ON STRATEGIC PRIORITIES

HP WOLF ENTERPRISE SECURITY

HP WOLF ENTERPRISE SECURITY FOR PCs

HP SURE CLICK ENTERPRISE⁷

This enhanced version of HP Sure Click isolates applications and files within micro VMs, then backs it up with HP's intelligence reporting so IT teams can rapidly act on threats.

HP SURE ACCESS ENTERPRISE

Allows users to safely work from anywhere via hardware-protected virtual machines, which remain isolated from the Windows operating system to keep corporate data secure no matter what threats emerge.

HP WOLF ENTERPRISE PC SERVICES

Larger businesses and government are the target of 72% of cyberattacks,⁸ so let HP's credentialed experts provide protection against zero-day attacks. Whenever you need support, from dealing with the smallest query to configuring a custom-made security solution, HP's experts are ready to assist you.

HP WOLF ENTERPRISE SECURITY FOR PRINTERS

HP PRINT SECURITY ADVISORY SERVICES

Ease the burden on your IT team: HP's credentialed cybersecurity experts can assess your vulnerabilities and build a comprehensive plan unique to your remote, distributed, traditional, or hybrid environment.

HP SECURE MANAGED PRINT SERVICES

Stay up to date with the latest protections: We'll deploy and help secure your print fleet over time—from device hardening and shoring up vulnerability points to advanced solutions that address people, processes, and compliance.

HP WOLF ENTERPRISE SECURITY IS HERE TO HELP

Let the professionals handle print security for you. From transforming digital processes, to securely elevating your print ecosystem to the cloud, to establishing critical settings across your print fleet, HP has the expertise to take care of it so your IT team can stay on-strategy.

72%

VERIZON'S 2020 DATA BREACH REPORT
FOUND THAT LARGER BUSINESSES AND
GOVERNMENT ARE THE TARGET OF 72%
OF CYBERATTACKS.⁸



SUMMARY

The borderless workplace requires security that not only stays ahead of evolving threats, but also flexes to fit changing work styles. With thousands of malware variants engineered every day, your business is under constant attack. Protect your people, data, and reputation by trusting a partner who:

- Leverages deep expertise and advanced analytics for actionable intelligence into your multi-vendor, multi-OS devices
- Continually researches threats and malware attacks with credentialed cybersecurity experts at HP Labs
- Covers all your endpoints with a zero-trust security architecture

A NEW BREED OF ENDPOINT SECURITY⁹

Learn more at hp.com/wolfprosecurity and hp.com/wolfenterprisesecurity



HP WOLF SECURITY

¹ Aspen Institute, Combatting Cybercrime During COVID-19, <https://www.aspeninstitute.org/blog-posts/combating-cybercrime-during-covid-19/>, April 2020

² Remote work changing landscape: IT Leader View, HP, May 2020

³ Based on HP's unique and comprehensive security capabilities at no additional cost among vendors on HP Elite PCs with Windows and 8th Gen and higher Intel[®] processors or AMD Ryzen[™] 4000 processors and higher; HP ProDesk 600 G6 with Intel[®] 10th Gen and higher processors; and HP ProBook 600 with AMD Ryzen[™] 4000 or Intel[®] 11th Gen processors and higher.

⁴ HP's most advanced embedded security features are available on HP Enterprise and HP Managed devices with HP FutureSmart firmware 4.5 or above. Claim based on HP review of 2021 published features of competitive in-class printers. Only HP offers a combination of security features to automatically detect, stop, and recover from attacks with a self-healing reboot, in alignment with NIST SP 800-193 guidelines for device cyber resiliency. For a list of compatible products, visit: hp.com/go/PrintersThatProtect. For more information, visit: hp.com/go/PrinterSecurityClaims.

⁵ HP Security Manager for Pro-class devices only available via select HP Channel Partners, availability will vary. HP Security Manager for Pro-class devices available through Flex- worker Services/MPS deals beginning June 2021. Availability will vary.

⁶ HP Secure Print works with most network-connected printers and MFPS. On-device authentication requires HP FutureSmart firmware 4.8 or newer. Supported card readers include X3D03A (HP USB Universal Card Reader) and Y7C05A (HP HIP2 Keystroke Reader). Internet connection required for some functionality. For more information, see hp.com/go/secureprint.

⁷ HP Sure Click Enterprise is sold separately and requires Windows 8 or 10 and Microsoft Internet Explorer, Google Chrome, Chromium or Firefox are supported. Supported attachments include Microsoft Office (Word, Excel, PowerPoint) and PDF files, when Microsoft Office or Adobe Acrobat are installed.

⁸ Verizon, 2020 Data Breach Investigations Report, <https://www.verizon.com/business/resources/reports/dbir/>, May 2020

⁹ HP Security is now HP Wolf Security. Security features vary by platform. Please see product data sheet for details.