

ACCELERATE YOUR SAP HANA AND S/4HANA TRANSFORMATION JOURNEY WITH HPE

Expertise

#1

**Among all SAP HANA® server vendors
and for all types of deployments**

HPE is the #1 system vendor for SAP HANA* with approximately 40 percent market share—more than the next three vendors combined—and is the leader in deployments of SAP HANA appliances, tailored datacenter integration (TDI), SAP® BW/4HANA®, and SAP S/4HANA®.

34,000+

**HPE servers deployed for SAP HANA
worldwide**

HPE has thousands of customers running SAP HANA on HPE systems.

HPE IT runs SAP HANA with nearly

50 TB

in production

HPE is one of SAP's largest customer environments! HPE IT organization has been on a multi-year journey to SAP HANA as well, with nearly 50 TB in production. Part of a broad "HPE Next" initiative, HPE IT was the first to implement SAP S/4HANA 1709 Central Finance and internally runs the world's largest instance.

200

**HPE, SAP®, and Intel® engineers in
co-innovation labs**

HPE expertise is gained from a 30-year working relationship with SAP and through dedicated engineers in co-innovation labs focused on digital transformation.

46%

of SAP licenses run on HPE systems

Regardless of industry or company size—from large manufacturing companies looking for time-proven business solutions or high-tech startups searching for the latest innovations—HPE and SAP deliver comprehensive solutions.

25,000

customers running SAP on HPE

With nearly 25,000 customers running SAP applications on HPE, and unparalleled HANA migration experience, HPE brings a unique understanding of SAP and SAP HANA environments that benefit customers of all sizes and with all types of workloads.



USE

- Business Warehouse
- Real-time Analytics
- App Tier
- SAP S/4HANA
- SAP HANA DB

SIZING

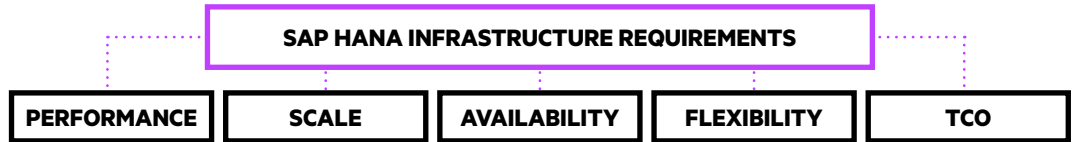
- Current DB
- Future DB
- Consolidation

ENVIRONMENT—CONSUMPTION

- On-premises
- Hybrid cloud
- Cloud

DEPLOYMENT

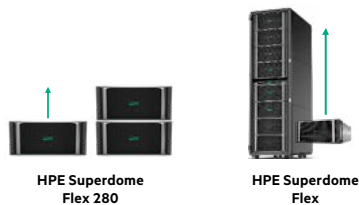
- TDI
- Appliance
- Extended IT



An unmatched combination of performance, flexibility, and availability for small to large enterprises

Optimum choice of deployment: Appliance or TDI, conventional on-premises or with cloud economics

▶ DATABASE TIER



#1 in scale-up and scale-out capacity*
 Unique modular architecture
 Extreme RAS technology
 World-record system performance
HPE Superdome Flex:
 Equips environments of all sizes
HPE Superdome Flex 280:
 The scale-up server for small and midsize environments



A mission-critical infrastructure designed to address a broad range of customer needs

hpe.com/info/superdome
hpe.com/info/proliant

▶ APP TIER

Production systems for SMB and hyperconverged infrastructure also ideal for enterprise test and development environments

hpe.com/simplivity
hpe.com/info/proliant



SAP Business One® powered by SAP HANA



HPE ProLiant DL360/380



Innovative composable infrastructure for SAP application tier (accessing SAP HANA)

hpe.com/synergy



HPE Synergy 480/660

▶ STORAGE



100% availability

Extreme performance
 Cloud agility
 HPE InfoSight—Machine Learning



Comprehensive all-flash and hybrid flash storage

hpe.com/storage/sap

▶ SOFTWARE

Near-zero downtime

HPE Serviceguard for Linux®
 Leading high availability and disaster recovery clustering solution from HPE

Maximize application uptime

- Minimize unplanned downtime
- Eliminate planned downtime

Recover rapidly and automatically

- Quick failure detection and automatic recovery
- Seamlessly add disaster recovery protection

Out-of-box application awareness

Preserve data integrity

- Assured data integrity under any failover scenario
- Proven unique algorithms to ensure robust recovery



Innovative software to maximize application uptime

hpe.com/servers/sglx

LEARN MORE AT

hpe.com/info/sap/hana

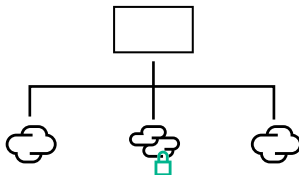


* Currently certified from 4 to 32 sockets and from 1.5 TB to 24 TB of shared memory

** h20195.www2.hpe.com/V2/GetDocument.aspx?docname=a00074521enw

Services

TRULY COMPREHENSIVE HPE POINTNEXT SERVICES



Preparing and Planning

Rapid Advisory Service for SAP HANA. Hybrid Cloud Modernization for SAP Intelligent Enterprise, including S/4HANA. **SAP HANA Migration assessment. Platform Modernization assessment. SAP Performance Analysis continuous Improvement Services** spanning SAP Advisory, SAP Performance, Security, and Network.



Deploying and Migrating

Rapid Deployment Service for SAP HANA. High Availability and Disaster Tolerance services for SAP HANA. Database Migration services for SAP HANA. Platform Migration (U2L) services. Upgrade Accelerator for HANA 2.0. Platform Protection and Compliance for SAP HANA. Recovery Manager Central for SAP HANA.

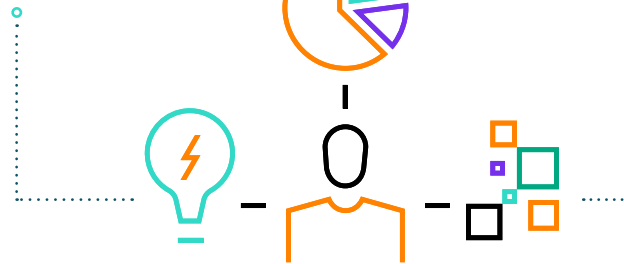


Consuming, Operating, and Optimizing

HPE GreenLake for SAP HANA. HPE GreenLake Management Services for SAP. HPE Operational Services Experience for SAP HANA spanning enhances standard HPE Operational Services with access to HPE Center of Excellence (COE), Solution Lifecycle Planning Service, SAP performance services, and eligibility for Lifecycle Services.

1500+

SAP HANA consulting projects to date



500+

SAP HANA experts



HPE Center of Excellence for SAP HANA

98%

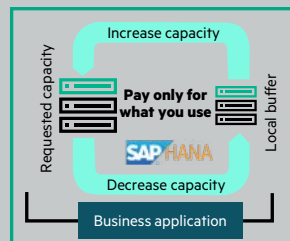
of customer issues are resolved within Center of Excellence*

Reduce time to diagnose and resolve infrastructure issues with comprehensive expert advice. Collaborative support engagement with SAP. hpe.com/pointnext

SAP HANA Enterprise Cloud (HEC) Customer Edition (CE) with HPE GreenLake

The Customer Edition of SAP HEC is a turnkey, OPEX, cloud subscription offering with HPE GreenLake, available through SAP. This offering helps customers leverage cloud capabilities, while keeping their SAP landscape on-premises. HPE will supply, install, and manage the infrastructure, while SAP will deliver white-glove operations and application management services.

HPE GREENLAKE FOR SAP HANA



CONSUMPTION-BASED IT

Cloud-like simplicity, agility, and economics with the security and performance of on-premises IT

Infrastructure capacity that never runs out. Scalable on-demand in minutes from the buffer on-site. Metered usage billed monthly as a service—move from up-front capital expenditures to a pay-per-use model. Your choice of technology—determine your own “right mix” of hybrid cloud and workload placement without having to choose. Enterprise-quality support. hpe.com/greenlake

* Based on COE internal reporting 2019. Cases not resolved in COE are resolved by product engineering.