

# BELKIN'S LATEST INNOVATION BRINGS TECHNOLOGY AND EFFICIENCY TO THE CLASSROOM



CASE STUDY



**LAKE STEVENS**  
School District

## INDUSTRY

Education

## CLIENT

Lake Stevens School District

## OVERVIEW

Belkin's Store and Charge Go, a portable storage unit that safely charges multiple devices, conveniently brings technology to the classroom.

## OBJECTIVES

To provide a smaller, easier-to-manage storage unit for devices that's more accessible and convenient for both students and teachers, and that benefits educational learning environments.

## APPROACH

Belkin's Store and Charge Go units were placed in over 75 classrooms since 2017.

## BACKGROUND

Lake Stevens School District is located in Lake Stevens, Washington. It is made up of an early learning center, seven elementary schools, two middle schools, one middle school, a high school and a homeschool parent partnership. LSSD serves more than 8,900 students in preschool through 12th-grade. The district is proud to inspire excellence every day.

## THE CHALLENGE

As the coordinator of technology at Lake Stevens school district, Phil Biggs created a classroom model to make sure technology plays an appropriate and effective role in the educational environment. With a marked emphasis on creative play, he sought technological assistance.

Classrooms are busy places with limited space, particularly in the kindergarten and first grade rooms. With screen time limited to an hour or two, he wanted a way to store Chromebooks easily and conveniently. Standard large technology carts not only occupied large areas, but the tangles of powers strips and cords impinged their mobility around the rooms.

Any solution would occupy minimal space, be free of clutter and offer portability.

## THE SOLUTION

After implementing the Belkin Store and Charge Go in kindergarten and first grade classrooms, they proved to be not only a more portable, easier to manage, and more accessible solution, it solved their problems in rolling out Chromebooks for younger students.

The Store and Charge Go units fit perfectly with their learning model, as the portability of the totes allowed teachers to easily and quickly move a group of Chromebooks to a table top or classroom area where students can use them in the appropriate activity. This not only cut down set up time between lessons, but increased productivity. And, since they didn't take up a lot of space, they allowed more spots in the classroom for storage and other activities.

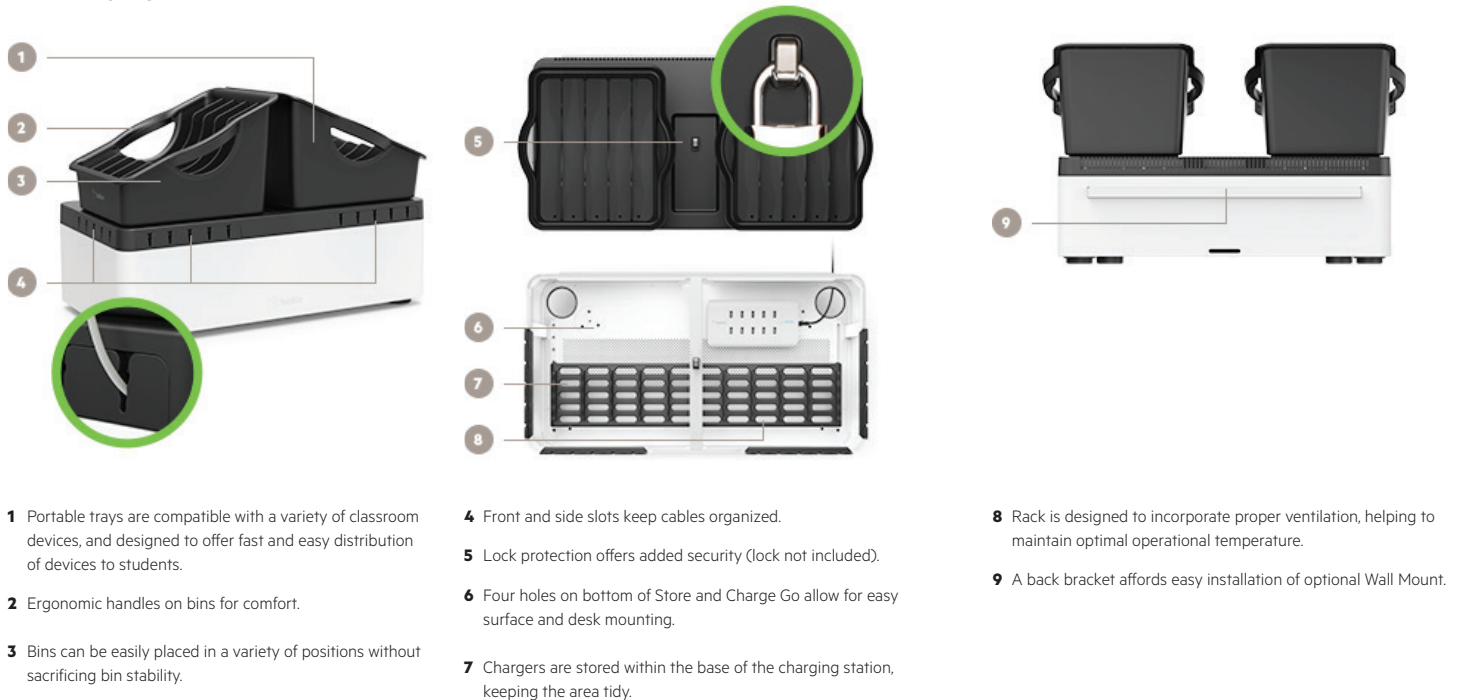
“ The Belkin Store and Charge Go units have helped us solve several unique problems as we began to roll out Chromebooks for our younger students. We love the Store and Charge Go for three reasons: storage, management and power supply. The ease of setup, flexibility in the classroom and quality construction make them a win for all. ”

-Phil Biggs

With hidden wires enclosed, this solution also offered increased safety for younger students, as well as the ability to locate the equipment however convenient. The net result was that all technology carts were immediately replaced with Belkin's Store and Charge Go units, improving access to education across the district.



### KEY FEATURES



- 1 Portable trays are compatible with a variety of classroom devices, and designed to offer fast and easy distribution of devices to students.
- 2 Ergonomic handles on bins for comfort.
- 3 Bins can be easily placed in a variety of positions without sacrificing bin stability.

- 4 Front and side slots keep cables organized.
- 5 Lock protection offers added security (lock not included).
- 6 Four holes on bottom of Store and Charge Go allow for easy surface and desk mounting.
- 7 Chargers are stored within the base of the charging station, keeping the area tidy.

- 8 Rack is designed to incorporate proper ventilation, helping to maintain optimal operational temperature.
- 9 A back bracket affords easy installation of optional Wall Mount.

P

E

W

[belkinbusiness.com](https://www.belkinbusiness.com)

Chat

[belkinchat.com](https://www.belkinchat.com)