



Automatic License Plate Recognition Solution



The *Original* Software Only LPR Solution



The software-only LPR solution that started it all

Just Got Better

with version 2.6.0

PlateSmart ARES® ushered in a new era of software-only LPR that could work with virtually any video management system (VMS) or IP camera. - Now, thanks to even more cutting-edge AI and innovative software development, PlateSmart ARES is **setting the bar even higher.**



Deep Learning = More Actionable Data

AI and machine learning allows PlateSmart ARES to identify not only the plate but also the state jurisdiction and vehicle make.



Cutting-edge deep learning technology lets PlateSmart ARES capture even more:

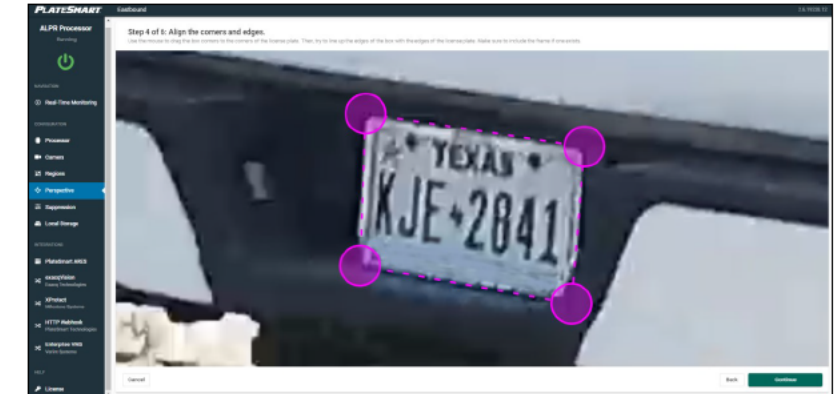
- Vehicle color
- Vehicle orientation (front, back or profile)
- Vehicle type

COMING SOON

COMING SOON

SUPERIOR ACCURACY MADE EVEN BETTER with Perspective Correction

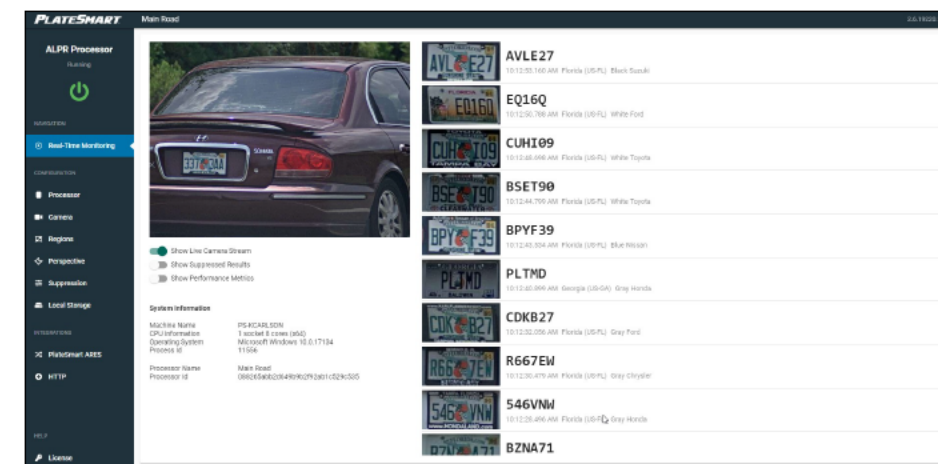
Not every camera can be placed to capture a plate head-on. Perspective Correction lets you fix that, making plates at up to a 45° angle look as if they are directly in front of the camera. The result? Dramatically improved accuracy without the need to move the camera.



Perspective correction lets you identify the edges of angled plates passing a camera so PlateSmart ARES can read them as if they were captured head-on.

PERFORMANCE ENHANCED with Frame Regions

Do the plates you read occupy only specific portions of the frame? Now you can tell PlateSmart ARES to only look for plates in those areas. You can even mask areas of the frame so they are never read, or tell the system to only read when motion is detected. This reduces demands on the processor and improves performance.



Manage all setup and administrative functions from the intuitive, browser-based interface. This includes all initial configuration as well as ongoing performance monitoring and troubleshooting. Even configure Perspective Correction and frame regions from here.

SETUP & ADMIN MADE EASY with Browser-Based Interface

The new browser-based interface makes everything from configuring camera connections to monitoring overall performance a breeze.

How PlateSmart ARES 2.6.0 Excels

- **More Actionable Data:** Cutting-edge deep learning now lets PlateSmart ARES read vehicle color in addition to plate, state jurisdiction and vehicle make. Vehicle orientation and type are coming soon.
- **Improved Accuracy:** Perspective correction allows plate reads from an angle (up to 45°).
- **Enhanced Performance:**
 - Selectable frame regions, masks and motion detection reduce strain on the processor and CPU.
 - Adjustable frame suppression for plate reads lets you balance accuracy with performance in your specific application
- **Flexible Operation:**
 - Works with existing PlateSmart ARES components (Viewer and Reporter) or as a stand-alone tool.
 - Uses web API for metadata publication, supporting industry standards such as HTTP, SSL, JSON, XML, Messagepack and OAuth.
- **Easy Setup and Administration:** All-new browser-based user interface makes setup and camera configuration easy and intuitive.
- **Improved ROI:** Use existing or off-the-shelf hardware for dramatically reduced capital investment.
- **Always Up to Date:** PlateSmart owns the software and can keep it up to date for you. No additional capital investments required.

The Markets that PlateSmart Serves

Private Sector

- Education
- Healthcare
- Airports
- Residential
- Gaming
- Parking
- Corporate



Public Sector

- Law enforcement and citywide surveillance
- Military
- Homeland security
- Government facilities
- Maritime ports
- Local municipalities

