

# Intel® NUC 11 Compute Element

U-Series Technical Specifications

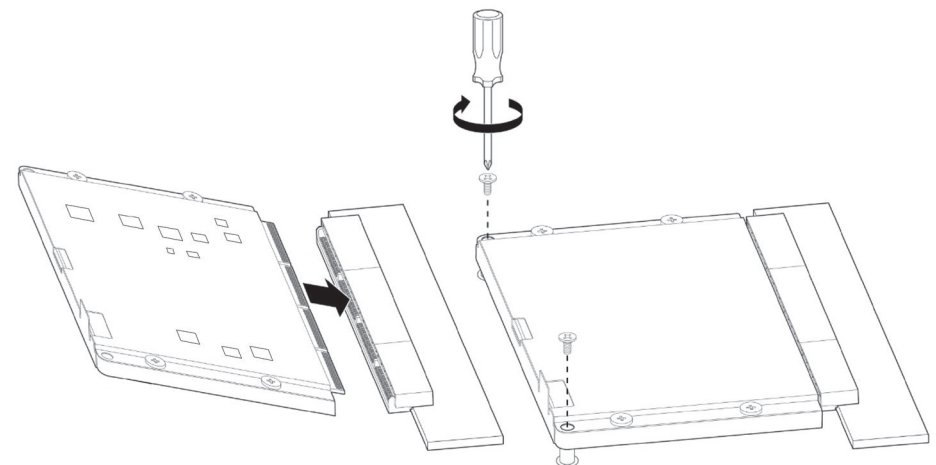
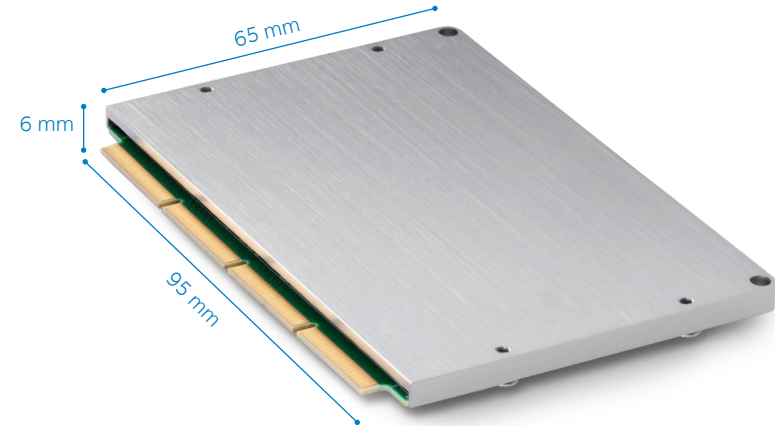
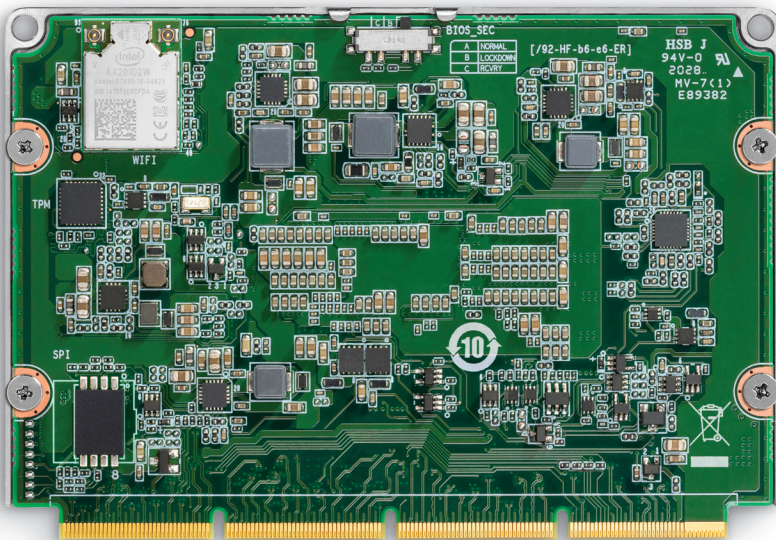
intel.  
nuc  
element



The Intel® NUC 11 Compute Element comes with processor, memory, and all the I/O you need in a tiny package.

## AVAILABLE PRODUCTS

- CM11EBv7-Intel® Core™ i7 processor with Intel vPro® Technology
- CM11EBi7-Intel® Core™ i7 processor
- CM11EBv5-Intel® Core™ i5 processor with Intel vPro® Technology
- CM11EBi5-Intel® Core™ i5 processor
- CM11EBi3-Intel® Core™ i3 processor
- CM11EBC-Intel® Celeron® processor



Integration method

# Intel® NUC 11 Compute Element

## U-Series Technical Specifications

For more information visit  
[www.intel.com/nucassets](http://www.intel.com/nucassets)  
[ARK.intel.com](http://ARK.intel.com)

### PROCESSORS

- Intel® Core™ i7-1185G7 Processor with Intel vPro® Technology (3.0 GHz@28W ~1.2 GHz@15W, up to 4.8 GHz Turbo 4 Cores, 8 Threads, 12 MB L3 Cache, 4267MT/s LPDDR4x)
- Intel® Core™ i7-1165G7 Processor (2.8 GHz@28W ~1.2 GHz@15W, up to 4.7 GHz Turbo 4 Cores, 8 Threads, 12 MB L3 Cache, 4267MT/s LPDDR4x)
- Intel® Core™ i5-1145G7 Processor with Intel vPro® Technology (2.6 GHz@28W ~1.1GHz@15W, up to 4.4 GHz Turbo, 4 Cores, 8 Threads, 8 MB L3 Cache, 4267MT/s LPDDR4x)
- Intel® Core™ i5-1135G7 Processor (2.4 GHz@28W ~0.9GHz@15W, up to 4.2 GHz Turbo, 4 Cores, 8 Threads, 8 MB L3 Cache, 4267MT/s LPDDR4x)
- Intel® Core™ i3-1115G4 Processor (3.0 GHz@28W ~1.7 GHz@15W, up to 4.1 GHz Turbo, 2 Cores, 4 Threads, 6 MB L3 Cache, 3733MT/s LPDDR4x)
- Intel® Celeron® 6305 Processor (1.8 GHz@15W, 2 Cores, 2 Threads, 4 MB L3 Cache, 3733MT/s LPDDR4x)

### GRAPHICS

- Intel® Iris® Xe Graphics (i7 vPro, i7, i5 vPro, & i5 SKUs)
- Intel® UHD Graphics 610 (i3 & Celeron SKUs)

### STORAGE CAPABILITIES

- 1x PCIe x4/SATA
- 1x PCIe x4 (Gen4)

### SYSTEM MEMORY

- 4 to 16 GB soldered-down, dual-channel LPDDR4X memory

### PERIPHERAL CONNECTIVITY

- Intel® Wi-Fi 6 AX201 soldered-down, 802.11ax 2x2 2.4Gbps
- Bluetooth 5.1
- Support for up to quad 4k@60 Hz displays (triple DDI plus eDP interfaces) (i7 vPro, i7, i5 vPro, i5 & i3 SKUs)

### SUPPORTED I/O

- 4 x USB 3.2 Gen 2
- 3 x USB 2.0
- 2 x DDI (configurable as DP 1.4a or HDMI 2.0b)
- 1 x Type C (DP/TBT/USB4)
- 1 x eDP 1.4b
- 1 x GbE PHY
- 1 x PCIe x4/SATA
- 1 x PCIe x4 (Gen4)
- 1 x PCIe x1
- 1 x HD Audio
- eSPI (EC interface)

### MODULE SIZE

- 95 mm x 65 mm x 6 mm (3.74" x 2.55" x .23")

### COMPUTE ELEMENT CAPABILITIES

- Qualified for 24/7 sustained operation
- Discrete TPM 2.0 device (on SKUs with Intel vPro® Technology only)
- Generation agnostic heat-spreader thermal interface
- Supports integration in to both stationary and mobile system designs
- 3-year product life cycle
- 3-year warranty
- Voltage and temperature sensing
- ACPI-compliant power management control

### OPERATING SYSTEM COMPATIBILITY

- Windows® 10
- Linux

### STORAGE TEMPERATURE

- -20° C to +60° C

### SAFETY REGULATIONS AND STANDARDS

- IEC/EN/UL 60950-1
- IEC/EN/UL 62368-1

### EMC/RF REGULATIONS AND STANDARDS

- FCC Part 15B/15C/15E
- CISPR/EN 55032/55024
- IEC/EN61000-3-2, IEC/EN61000-3-3
- ICES-003
- VCCI 32
- BSMI CNS 13438
- KN 32/35
- AS/NZS CISPR 32
- EN 300 328
- EN 301 893
- EN 300 440
- EN 301 489-1/3/17
- EN 62311
- AS/NZS 4268
- AS/NZS 2772.2
- ARPANSA
- RSS 247

### ENVIRONMENTAL REGULATIONS

- EU RoHS
- China RoHS
- Taiwan BSMI RoHS
- REACH