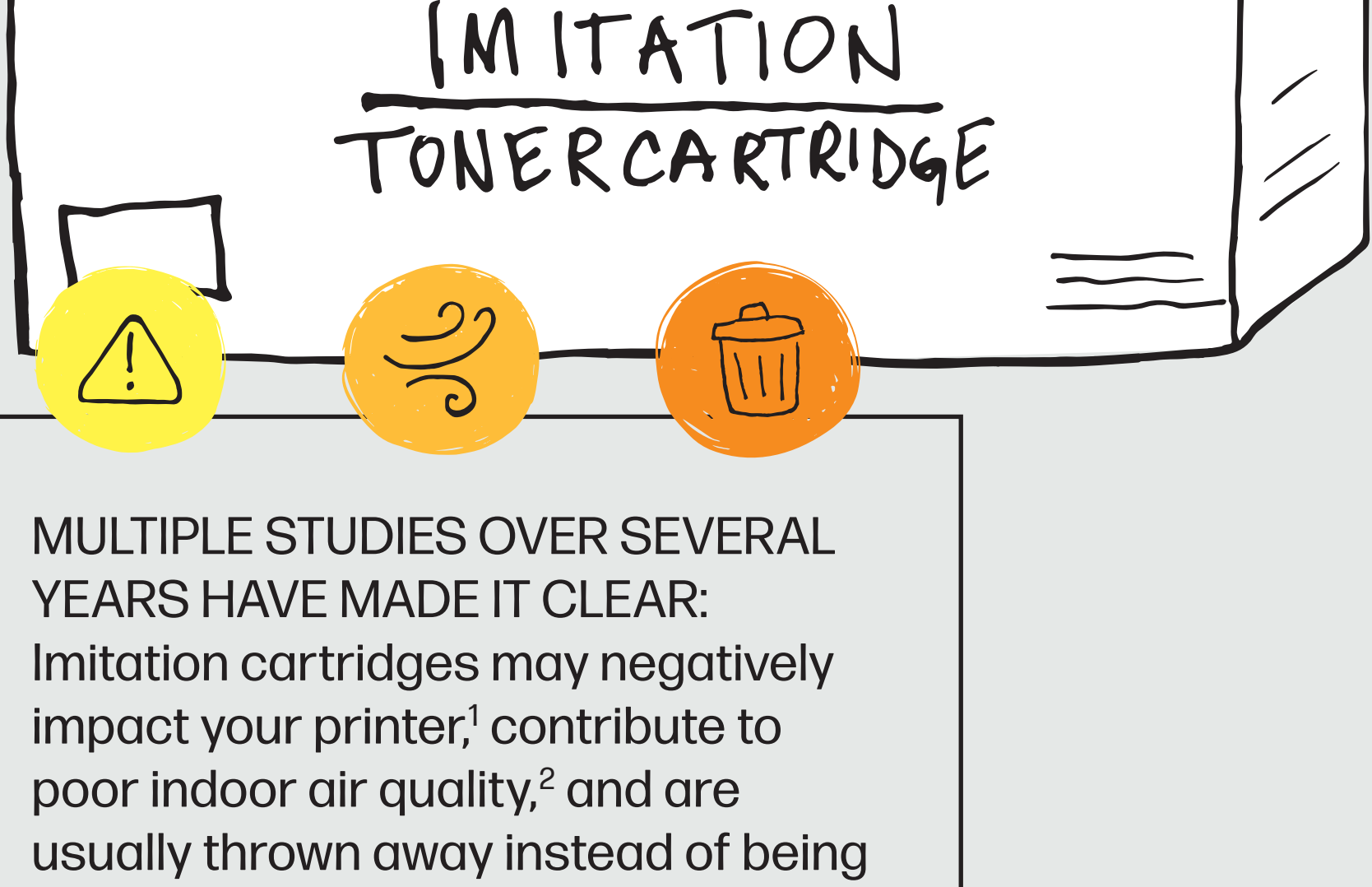


# Are imitation cartridges worth the gamble?



Off-brand toner cartridges may look similar or claim to be "compatible," but testing reveals they are poor replacements for Original HP.



MULTIPLE STUDIES OVER SEVERAL YEARS HAVE MADE IT CLEAR: Imitation cartridges may negatively impact your printer,<sup>1</sup> contribute to poor indoor air quality,<sup>2</sup> and are usually thrown away instead of being recycled.<sup>3</sup>

## HOW DO IMITATIONS AFFECT MY PRINTER?

1/2 of pages have print-quality issues<sup>4</sup>

Imitations may cause your printer to require more service<sup>1</sup>

Nearly 50% of tested cartridges have performance issues or fail prematurely<sup>4</sup>

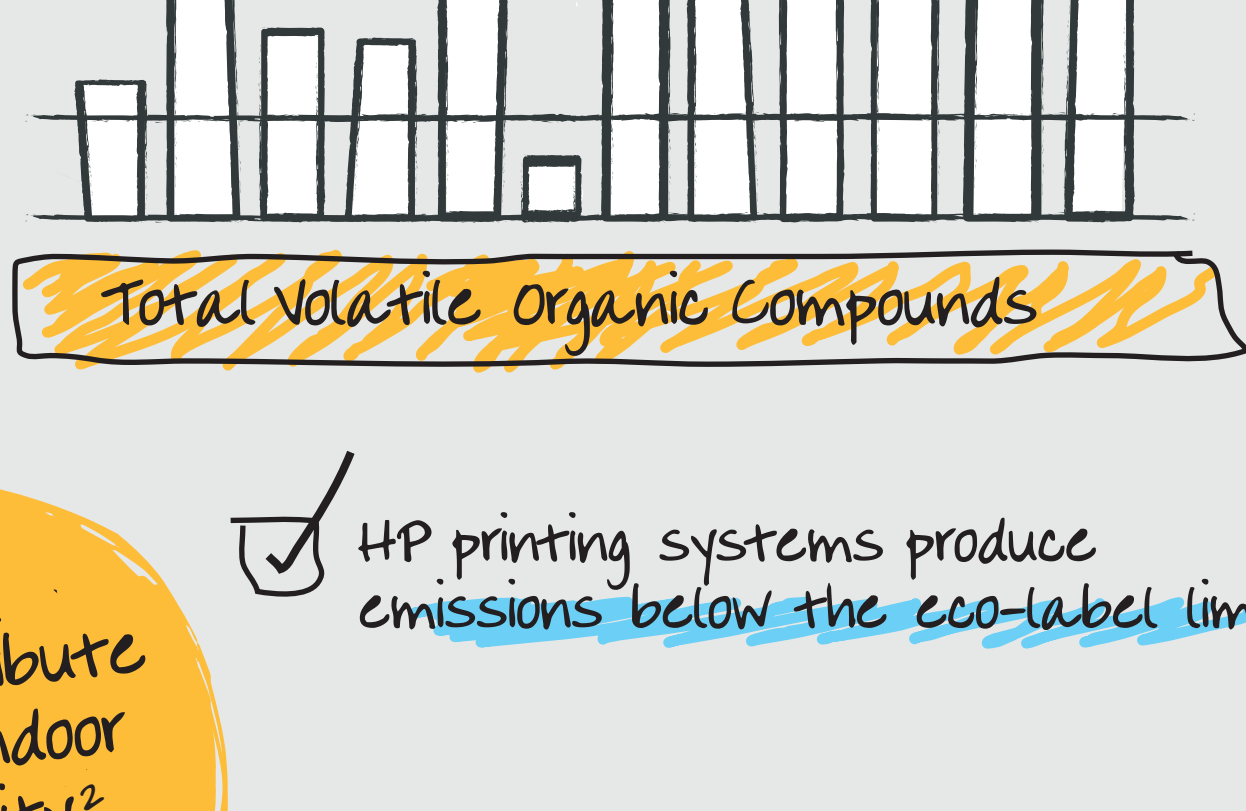


## HOW DO IMITATIONS IMPACT INDOOR AIR QUALITY?

96% of imitation toner cartridges tested failed eco-label emission criteria<sup>2</sup>

up to 5X over the limit

May be harmful to your health<sup>5</sup>



May contribute to poor indoor air quality<sup>2</sup>

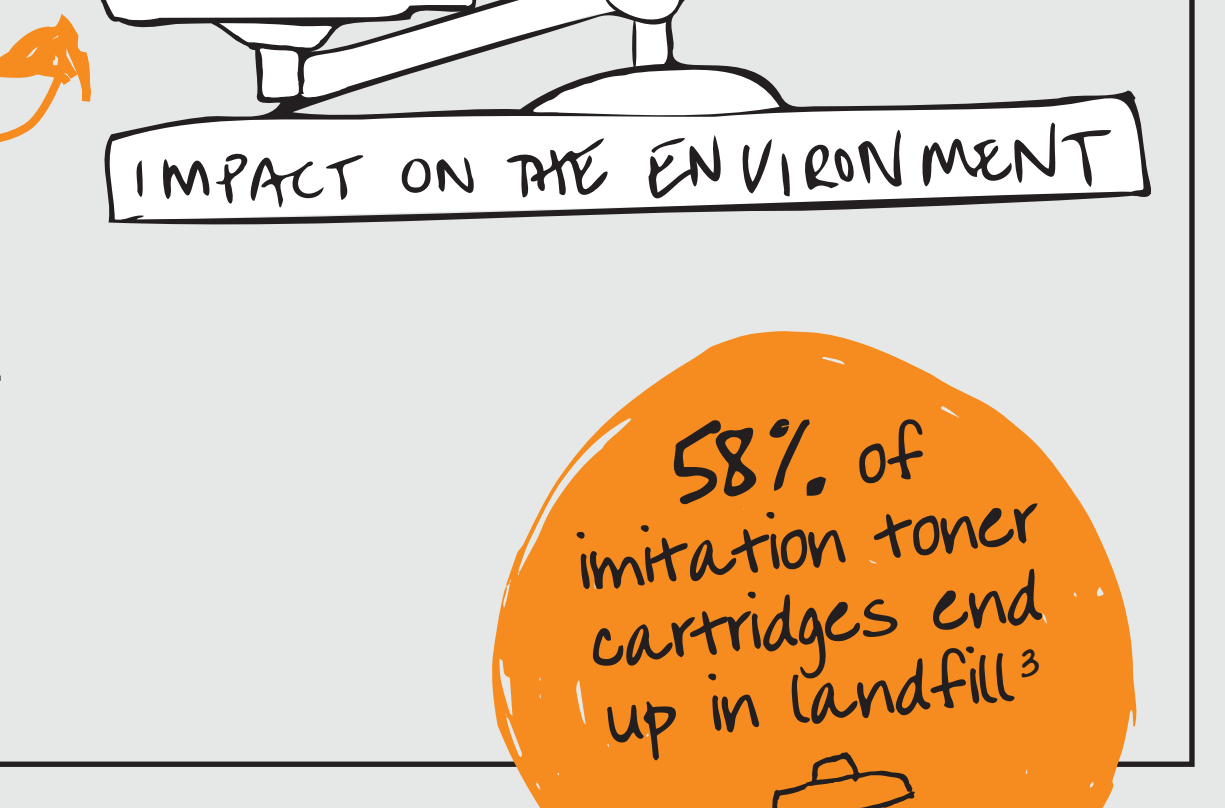
HP printing systems produce emissions below the eco-label limit

## HOW DO IMITATIONS IMPACT THE ENVIRONMENT?

30% larger carbon footprint than Original HP Toner Cartridges<sup>6</sup>

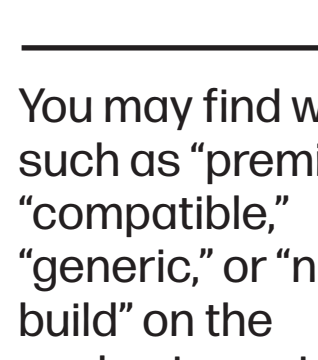
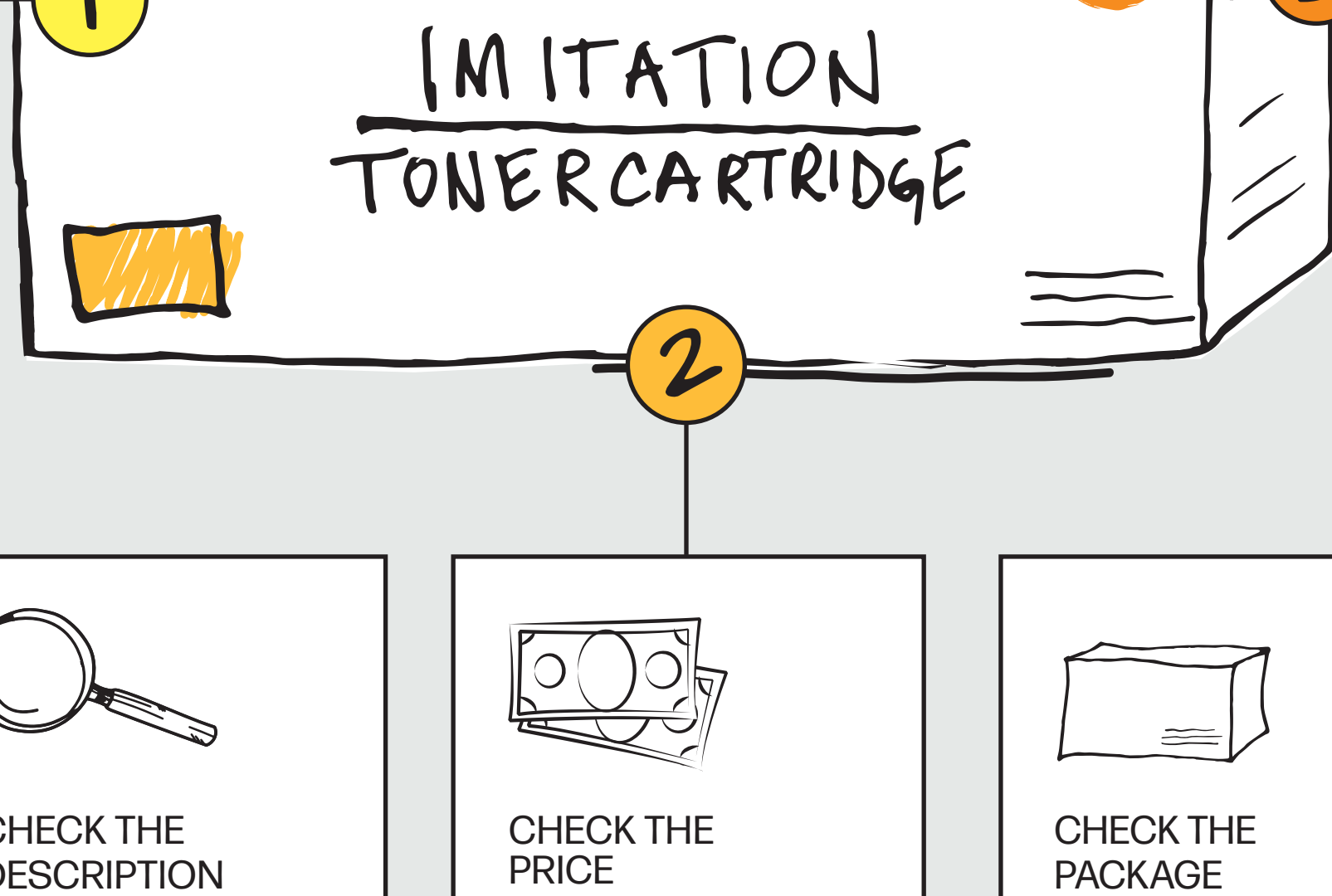
Use 23% more energy than Original HP Toner Cartridges<sup>6</sup>

Inconsistent print quality can often lead to reprinting and increased paper consumption, which can increase a cartridge's environmental impact<sup>6</sup>



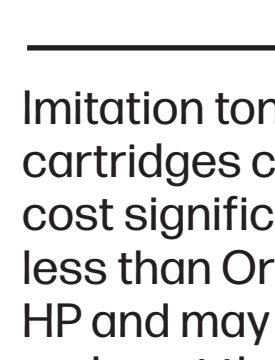
58% of imitation toner cartridges end up in landfill<sup>3</sup>

# How do I spot an imitation cartridge?



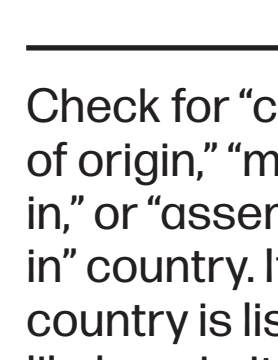
### CHECK THE DESCRIPTION

You may find words such as "premium," "compatible," "generic," or "new build" on the packaging or in the product description.



### CHECK THE PRICE

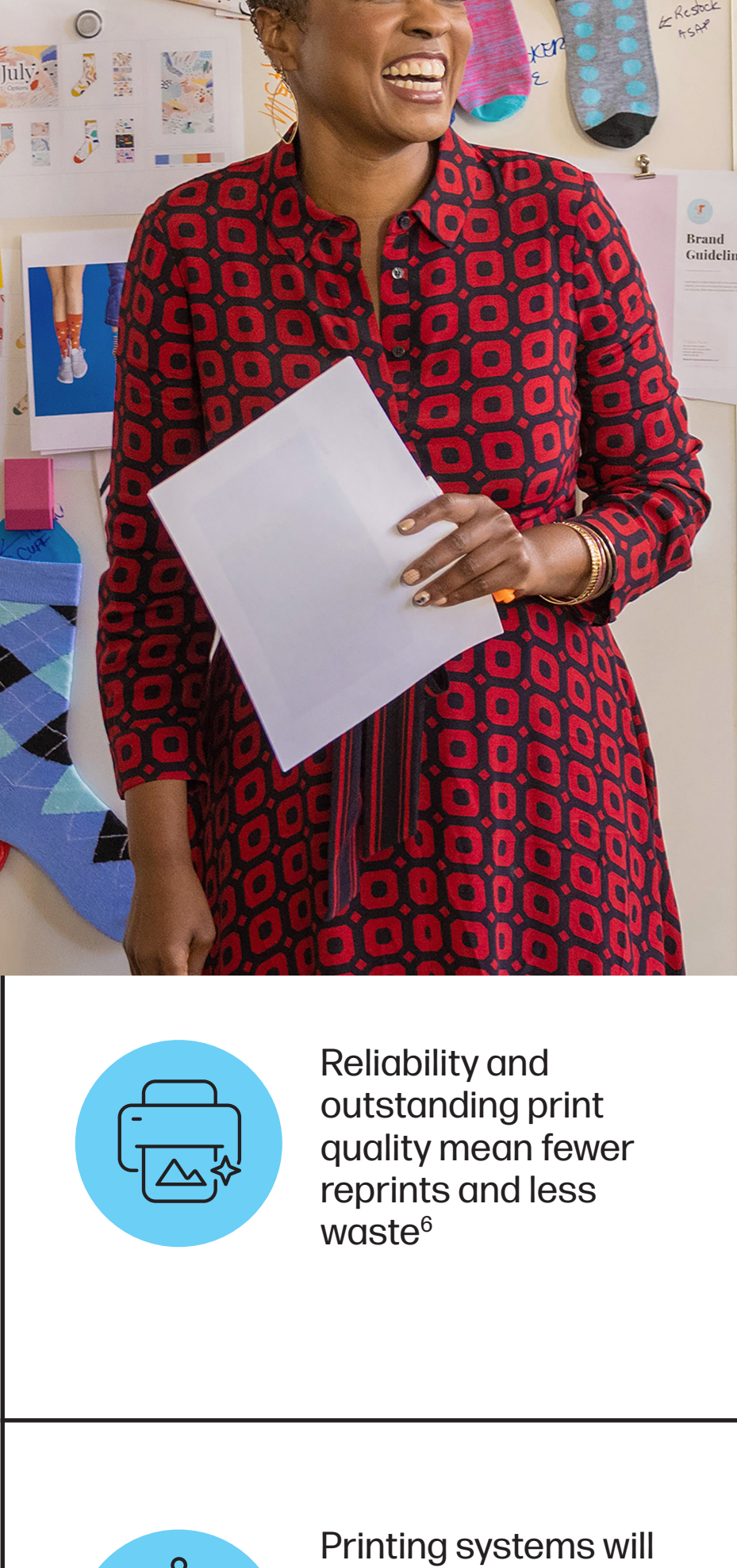
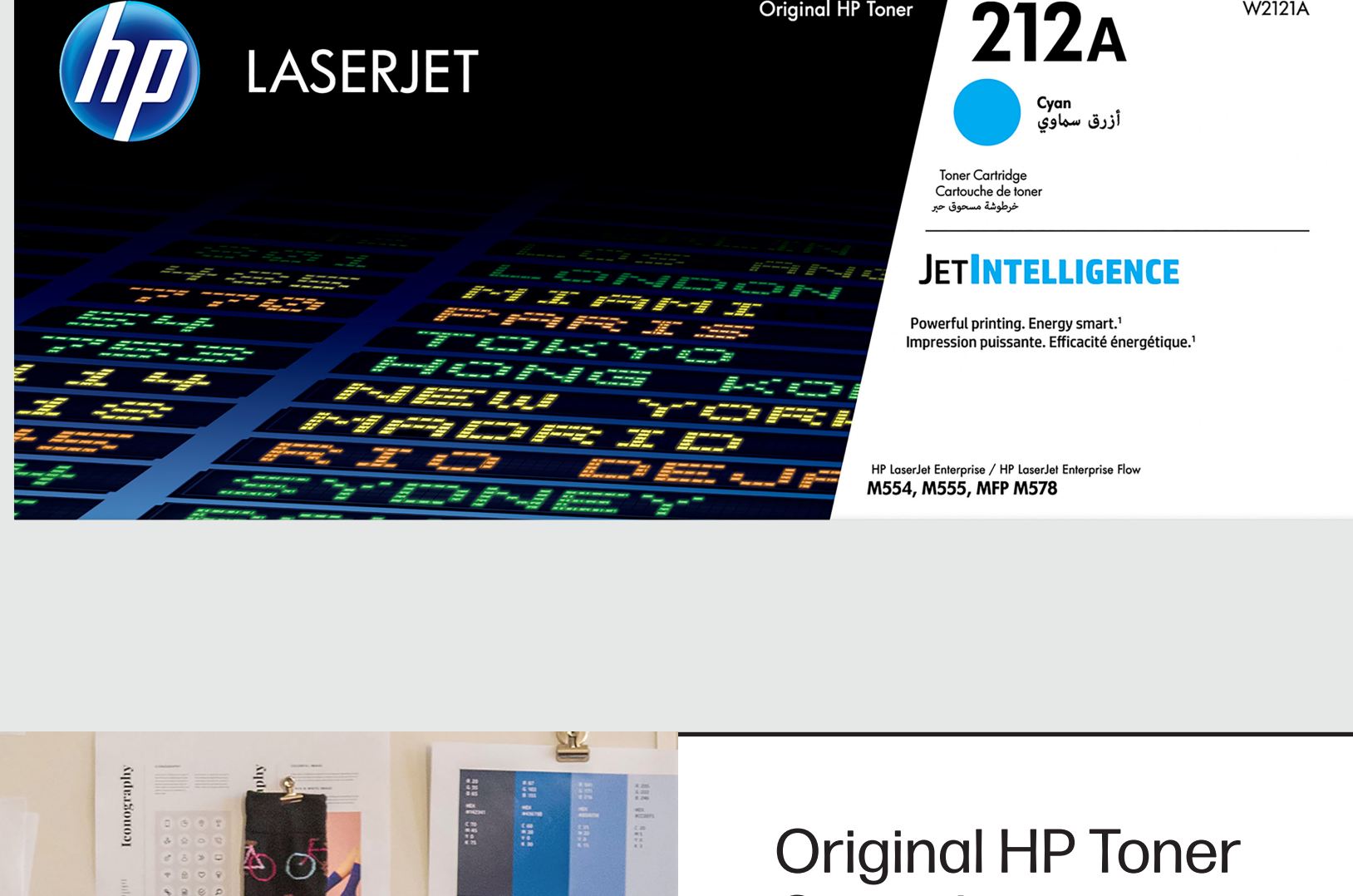
Imitation toner cartridges can cost significantly less than Original HP and may also undercut the price of remanufactured cartridges.



### CHECK THE PACKAGE

Check for "country of origin," "made in," or "assembled in" country. If no country is listed, it's likely an imitation.

# Only Original HP Toner Cartridges hit the spot.



Original HP Toner Cartridges are designed to work with your printer

# the first time, every time



Reliability and outstanding print quality mean fewer reprints and less waste<sup>8</sup>



Designed for security with tamper-resistant chips, firmware, and packaging to help protect your printer<sup>7</sup>



Printing systems will perform within EPEAT<sup>®</sup> and Blue Angel emission guidelines<sup>8</sup> and are designed with your health in mind



No Original HP Cartridges returned through HP Planet Partners are ever sent to a landfill<sup>9</sup>

